

Figure G1 Dissolved oxygen concentration (depth-averaged) (mg/L) of water samples from the eight sampling locations at mid-ebb and mid-flood between 1 January and 31 January 2008, and previous monitoring period between 24 October and 31 December 2007

Ref: 0018105_Annex G_water graphs.doc



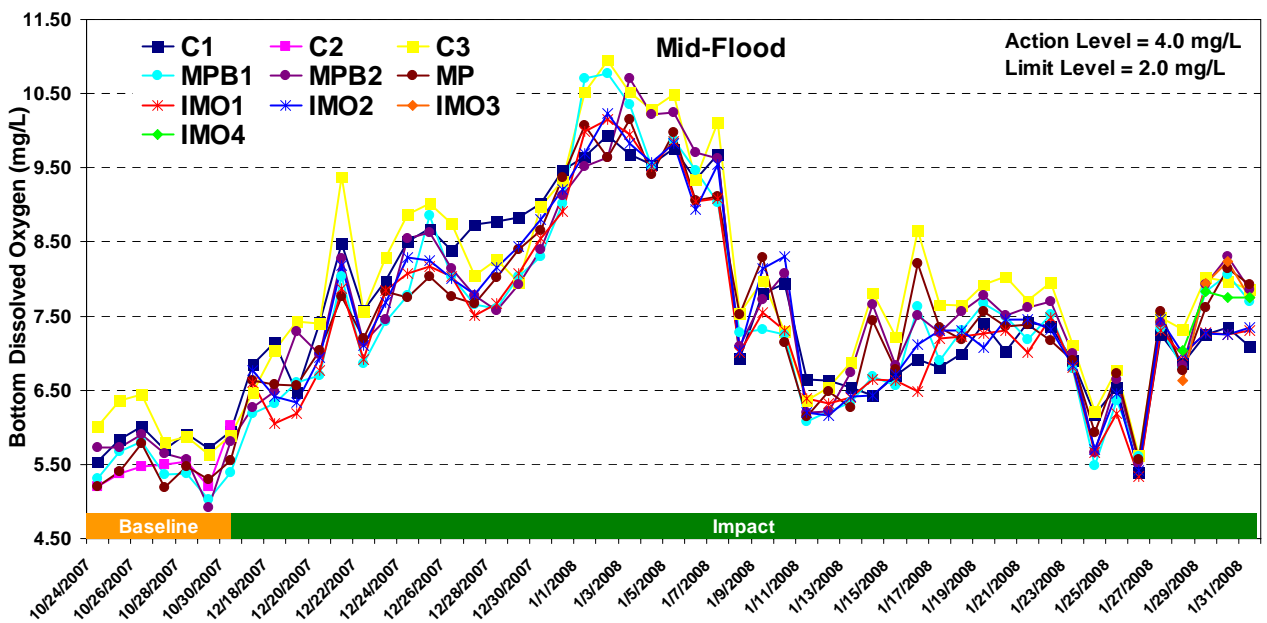
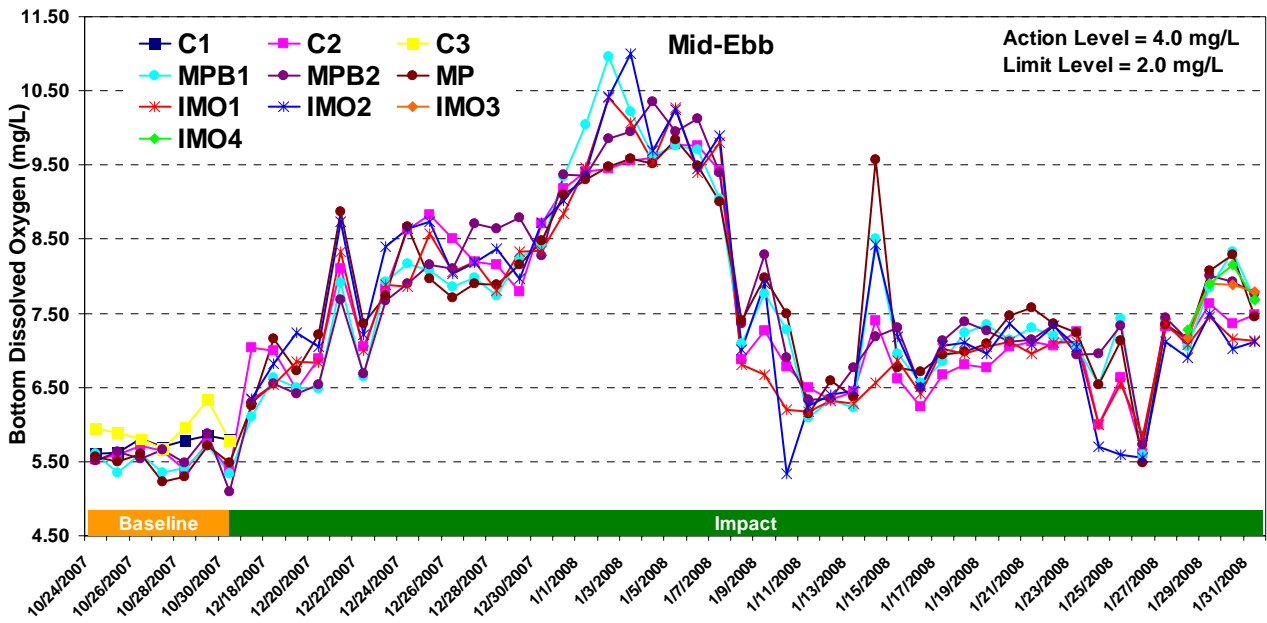


Figure G2 Dissolved oxygen concentration (bottom) (mg/L) of water samples from the eight sampling locations at mid-ebb and mid-flood between 1 January and 31 January 2008, and previous monitoring period between 24 October and 31 December 2007



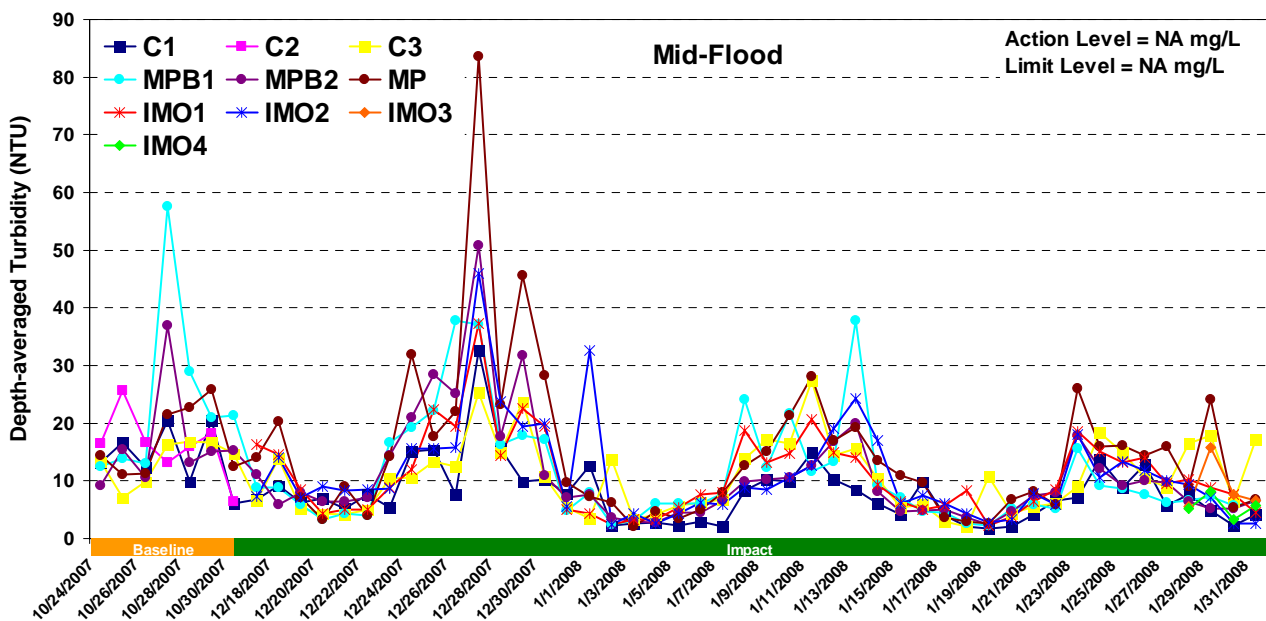
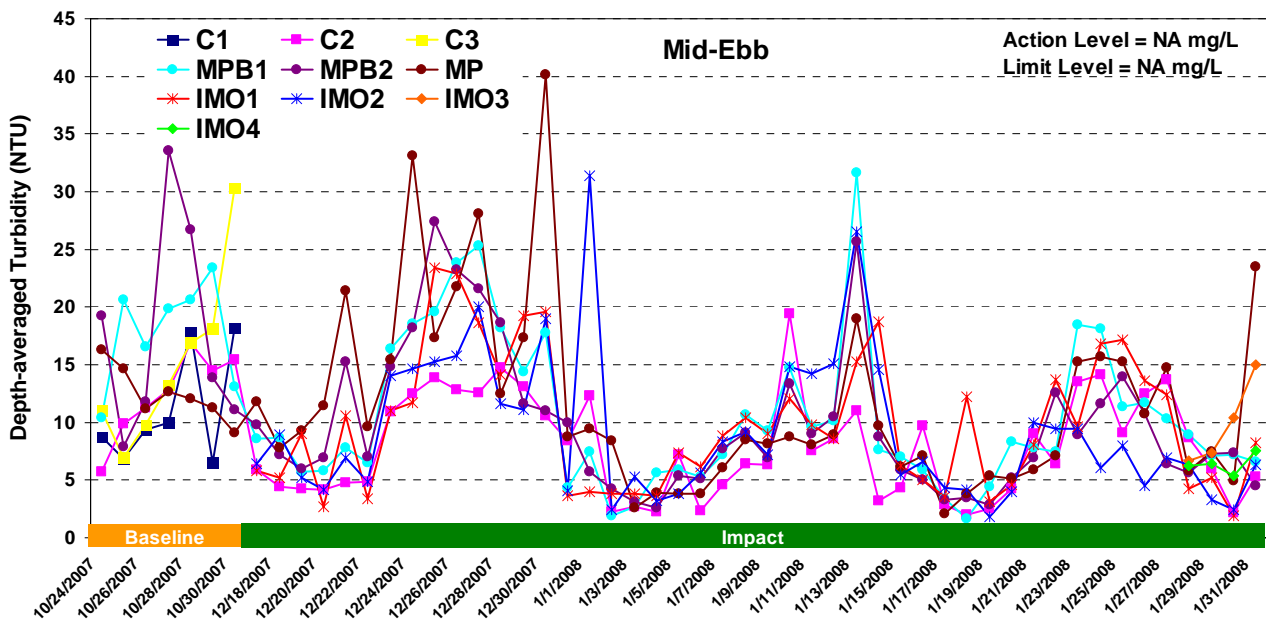


Figure G3 Depth-averaged turbidity (NTU) of water samples from the eight sampling locations at mid-ebb and mid-flood between 1 January and 31 January 2008, and previous monitoring period between 24 October and 31 December 2007



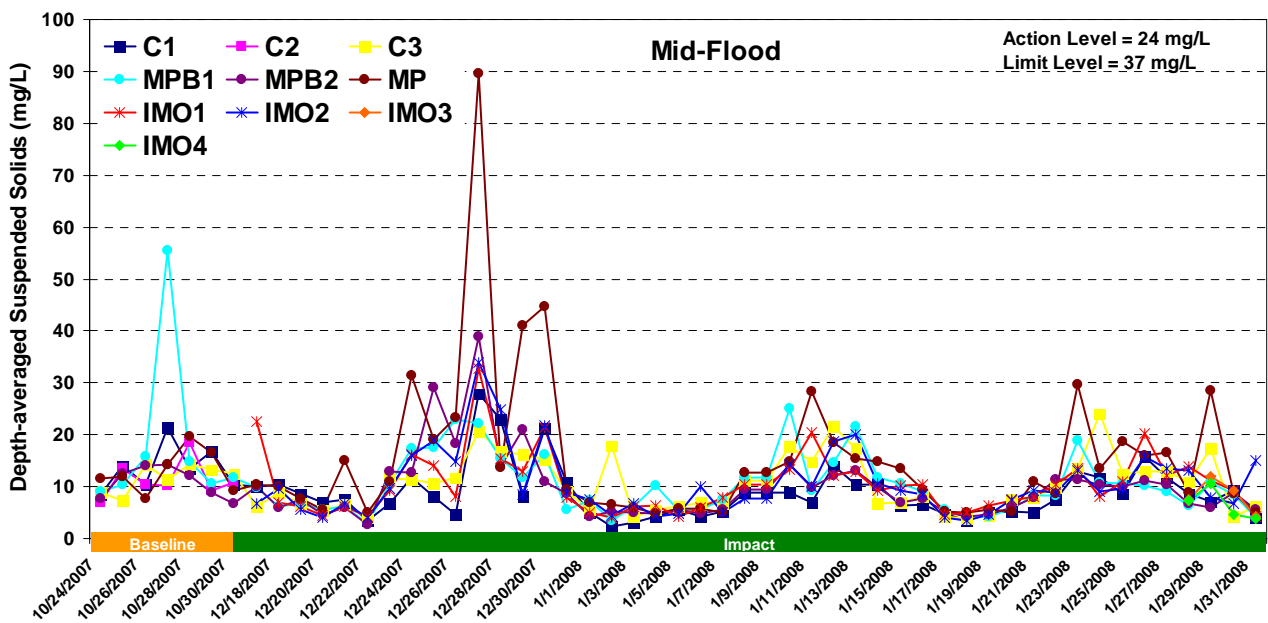
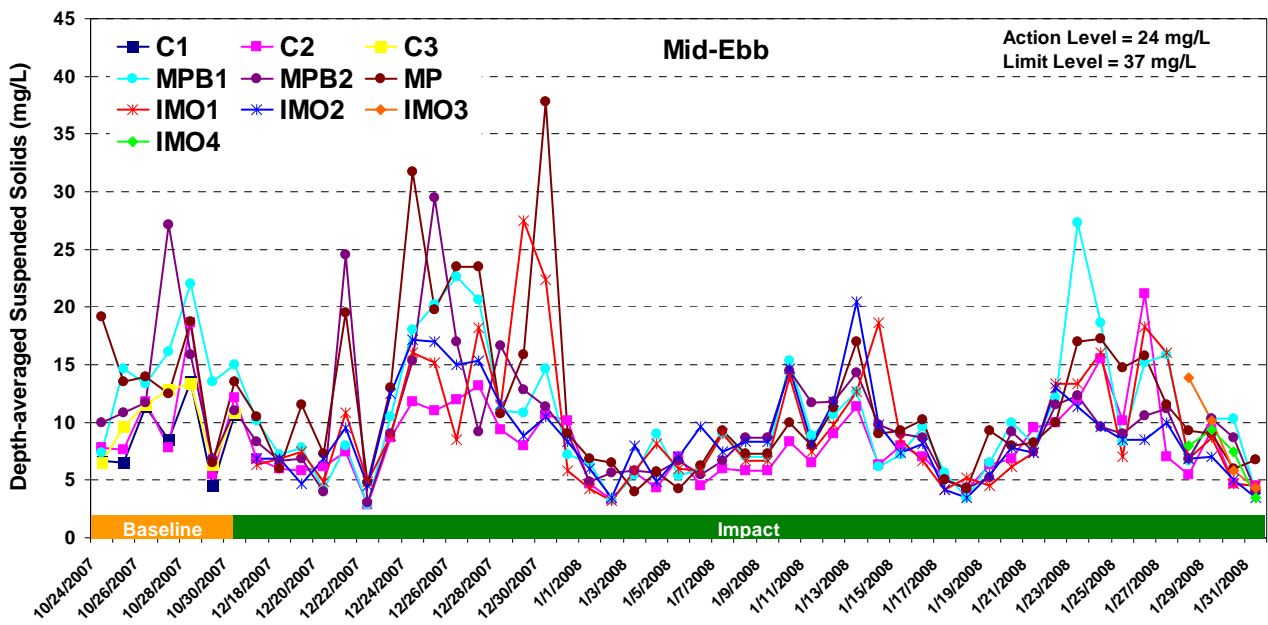


Figure G4 Depth-averaged suspended solids concentration (mg/L) of water samples from the eight sampling locations at mid-ebb and mid-flood between 1 January and 31 January 2008, and previous monitoring period between 24 October and 31 December 2007



Sampling Date	01/23/08
Weather & Ambient Temperature	Cloudy, 17C

Mid-Ebb

Station	C2 (NM5)							
Time (hh:mm)	11:50-11:52							
Water Depth (m)	20.2							
Monitoring Depth (m)	1.0		10.1		19.2			
Trial	Trial 1	Trial 2	Trial 1	Trial 2	Trial 1	Trial 2	Depth-averaged	Bottom
Water Temperature (°C)	18.6	18.6	18.6	18.6	18.7	18.6	18.61	-
Salinity (ppt)	35.2	36.1	36.6	35.8	36.0	36.9	36.09	-
pH	7.9	8.0	7.9	7.9	7.9	7.9	7.91	-
D.O. Saturation (%)	95.8	95.3	94.8	95.0	95.9	96.0	95.47	-
D.O. (mg/L)	7.2	7.2	7.1	7.2	7.3	7.2	7.21	7.25
Turbidity (NTU)	5.3	5.5	14.3	13.2	22.1	20.7	13.52	-
SS (mg/L)	8.0	10.0	13.0	13.0	14.0	14.0	12.00	-
Remarks	No dredging works was observed.							

Station	IMO1						Co-ordinates	
Time (hh:mm)	12:20-12:22						Northing	Easting
Water Depth (m)	7.9						22.21.411	113.53.372
Monitoring Depth (m)	1.0		4.0		6.9			
Trial	Trial 1	Trial 2	Trial 1	Trial 2	Trial 1	Trial 2	Depth-averaged	Bottom
Water Temperature (°C)	18.5	18.5	18.5	18.5	18.4	18.4	18.47	-
Salinity (ppt)	35.9	36.0	36.0	36.0	36.2	36.2	36.05	-
pH	7.9	7.9	7.9	7.9	7.9	7.9	7.86	-
D.O. Saturation (%)	92.5	92.2	93.2	92.9	94.3	93.9	93.17	-
D.O. (mg/L)	7.0	7.0	7.0	7.0	7.1	7.10	7.04	7.12
Turbidity (NTU)	8.0	8.0	9.6	9.3	11.5	11.6	9.67	-
SS (mg/L)	10.0	13.0	11.0	13.0	16.0	17.0	13.33	-
Remarks	No dredging works was observed.							

Station	IMO2						Co-ordinates	
Time (hh:mm)	12:36-12:38						Northing	Easting
Water Depth (m)	8.7						22.21.135	113.53.604
Monitoring Depth (m)	1.0		4.4		7.7			
Trial	Trial 1	Trial 2	Trial 1	Trial 2	Trial 1	Trial 2	Depth-averaged	Bottom
Water Temperature (°C)	18.6	18.5	18.5	18.5	18.3	18.2	18.42	-
Salinity (ppt)	35.1	35.1	36.3	36.5	37.0	37.0	36.17	-
pH	7.8	7.8	7.8	7.9	7.9	7.9	7.85	-
D.O. Saturation (%)	91.2	91.9	93.3	92.6	92.7	94.1	92.63	-
D.O. (mg/L)	6.9	6.9	7.0	7.0	7.0	7.11	7.00	7.05
Turbidity (NTU)	8.3	8.5	9.3	9.2	10.4	10.9	9.43	-
SS (mg/L)	12.0	13.0	12.0	14.0	8.0	9.0	11.33	-
Remarks	No dredging works was observed.							

Station	MPB1							
Time (hh:mm)	12:28-12:30							
Water Depth (m)	8.3							
Monitoring Depth (m)	1.0		4.2		7.3			
Trial	Trial 1	Trial 2	Trial 1	Trial 2	Trial 1	Trial 2	Depth-averaged	Bottom
Water Temperature (°C)	18.6	18.6	18.5	18.6	18.5	18.5	18.54	-
Salinity (ppt)	35.3	35.3	35.4	35.4	35.5	35.6	35.38	-
pH	7.9	7.8	7.9	7.8	7.9	7.8	7.85	-
D.O. Saturation (%)	91.9	92.2	92.1	92.6	92.7	93.1	92.43	-
D.O. (mg/L)	7.0	7.0	7.0	7.0	7.0	7.1	7.01	7.05
Turbidity (NTU)	15.6	16.5	17.6	18.8	21.9	20.6	18.50	-
SS (mg/L)	21.0	19.0	31.0	28.0	33.0	32.0	27.33	-
Remarks	No dredging works was observed.							

Station	MPB2							
Time (hh:mm)	12:45-12:47							
Water Depth (m)	9.0							
Monitoring Depth (m)	1.0		4.5		8.0			
Trial	Trial 1	Trial 2	Trial 1	Trial 2	Trial 1	Trial 2	Depth-averaged	Bottom
Water Temperature (°C)	18.6	18.5	18.4	18.5	18.3	18.3	18.42	-
Salinity (ppt)	36.1	36.1	36.4	36.4	36.9	36.8	36.43	-
pH	7.8	7.8	7.8	7.8	7.8	7.8	7.81	-
D.O. Saturation (%)	90.5	90.2	91.2	91.2	92.1	92.1	91.22	-
D.O. (mg/L)	6.8	6.8	6.9	6.9	6.9	7.0	6.88	6.95
Turbidity (NTU)	8.5	8.3	8.6	8.7	9.5	9.8	8.90	-
SS (mg/L)	13.0	12.0	12.0	13.0	10.0	14.0	12.33	-
Remarks	No dredging works was observed.							

Station	MP							
Time (hh:mm)	12:13-12:14							
Water Depth (m)	5.6							
Monitoring Depth (m)	1.0		2.8		4.6			
Trial	Trial 1	Trial 2	Trial 1	Trial 2	Trial 1	Trial 2	Depth-averaged	Bottom
Water Temperature (°C)	18.6	18.6	-	-	18.5	18.6	18.57	-
Salinity (ppt)	34.9	35.0	-	-	35.0	35.0	34.98	-
pH	7.8	7.8	-	-	7.8	7.8	7.81	-
D.O. Saturation (%)	94.6	93.5	-	-	94.6	95.5	94.55	-
D.O. (mg/L)	7.2	7.1	-	-	7.2	7.3	7.19	7.24
Turbidity (NTU)	9.3	9.8	-	-	20.3	21.7	15.28	-
SS (mg/L)	12.0	12.0	-	-	23.0	21.0	17.00	-
Remarks	No dredging works was observed.							

Compliance with Action and Limit Level

Parameter	As in EM&A		C2*130%		IMO1		IMO2		MPB1		MPB2		MP	
	Action Level	Limit Level	Action Level	Limit Level	Exceedance of Action	Exceedance of Limit Level	Exceedance of Action Level	Exceedance of Limit Level	Exceedance of Action Level	Exceedance of Limit Level	Exceedance of Action Level	Exceedance of Limit Level	Exceedance of Action Level	Exceedance of Limit Level
DO (Bottom)	4.2	4.0	7.2	7.2	N	N	N	N	N	N	N	N	N	N
DO (Depth-averaged)	3.3	2.5	7.2	7.2	N	N	N	N	N	N	N	N	N	N
Turbidity (Depth-averaged)	NA	NA	17.6	NA	N	N	N	N	Y	Y	N	N	N	N
SS (Depth-averaged)	24.0	37.0	15.6	15.6	N	N	N	N	Y	Y	N	N	N	N

Sampling Date	01/28/08
Weather & Ambient Temperature	Cloudy, 12C

Mid-Ebb

Station		C2 (NM5)							
Time (hh:mm)	15:52-15:54								
Water Depth (m)	20.8								
Monitoring Depth (m)	1.0		10.4		19.8				
Trial	Trial 1	Trial 2	Trial 1	Trial 2	Trial 1	Trial 2	Depth-averaged	Bottom	
Water Temperature (°C)	16.9	16.9	17.0	17.2	17.0	17.0	17.00	-	
Salinity (ppt)	37.1	37.2	37.2	37.5	37.5	37.1	37.25	-	
pH	7.9	8.0	8.0	7.9	8.0	8.0	7.96	-	
D.O. Saturation (%)	92.9	93.0	92.8	92.4	92.9	92.1	92.68	-	
D.O. (mg/L)	7.2	7.2	7.2	7.1	7.2	7.1	7.15	7.14	
Turbidity (NTU)	7.8	7.8	8.4	8.3	9.9	9.6	8.63	-	
SS (mg/L)	5.0	7.0	4.0	5.0	6.0	6.0	5.50	-	
Remarks	Dredging works was observed.								

Station		IMO1						Co-ordinates	
Time (hh:mm)	16:09-16:11						Northing	Easting	
Water Depth (m)	21.8						22.21.886	113.54.941	
Monitoring Depth (m)	1.0		10.9		20.8				
Trial	Trial 1	Trial 2	Trial 1	Trial 2	Trial 1	Trial 2	Depth-averaged	Bottom	
Water Temperature (°C)	17.9	17.8	17.2	17.3	17.3	17.2	17.45	-	
Salinity (ppt)	37.6	37.4	37.5	37.6	37.6	37.5	37.53	-	
pH	8.0	8.0	8.0	7.9	7.9	8.0	7.96	-	
D.O. Saturation (%)	92.6	91.0	91.6	90.5	91.8	92.4	91.65	-	
D.O. (mg/L)	7.0	6.9	7.0	6.9	7.0	7.10	7.01	7.07	
Turbidity (NTU)	3.0	3.3	4.8	4.2	5.0	5.2	4.25	-	
SS (mg/L)	9.0	8.0	6.0	8.0	5.0	5.0	6.83	-	
Remarks	Dredging works was observed.								

Station		IMO2						Co-ordinates	
Time (hh:mm)	16:16-16:18						Northing	Easting	
Water Depth (m)	21.2						22.21.615	113.55.448	
Monitoring Depth (m)	1.0		10.6		20.2				
Trial	Trial 1	Trial 2	Trial 1	Trial 2	Trial 1	Trial 2	Depth-averaged	Bottom	
Water Temperature (°C)	17.3	17.3	17.1	17.2	17.1	17.1	17.18	-	
Salinity (ppt)	37.6	37.6	37.7	37.6	37.6	37.5	37.60	-	
pH	7.9	7.9	7.9	7.9	7.9	7.9	7.90	-	
D.O. Saturation (%)	90.1	89.9	90.0	90.2	89.8	89.8	89.97	-	
D.O. (mg/L)	6.9	6.9	6.9	6.9	6.9	6.90	6.90	6.90	
Turbidity (NTU)	4.6	4.8	6.9	6.4	7.9	7.5	6.35	-	
SS (mg/L)	9.0	7.0	6.0	4.0	8.0	7.0	6.83	-	
Remarks	Dredging works was observed.								

Station		IMO3						Co-ordinates	
Time (hh:mm)	15:18-15:19						Northing	Easting	
Water Depth (m)	10.2						22.21.274	113.53.877	
Monitoring Depth (m)	1.0		5.1		9.2				
Trial	Trial 1	Trial 2	Trial 1	Trial 2	Trial 1	Trial 2	Depth-averaged	Bottom	
Water Temperature (°C)	16.5	16.5	16.5	16.5	16.5	16.4	16.47	-	
Salinity (ppt)	37.4	37.4	37.6	37.6	37.7	37.7	37.57	-	
pH	7.9	7.9	7.9	8.0	8.0	7.9	7.91	-	
D.O. Saturation (%)	92.9	94.2	92.1	94.1	94.0	90.2	92.92	-	
D.O. (mg/L)	7.2	7.3	7.2	7.3	7.3	7.0	7.23	7.17	
Turbidity (NTU)	6.5	6.6	6.7	6.6	6.8	6.6	6.63	-	
SS (mg/L)	10.0	10.0	12.0	16.0	16.0	19.0	13.83	-	
Remarks	Dredging works was observed.								

Compliance with Action and Limit Level

Parameter	As in EM&A		C2*130%		IMO1		IMO2		IMO3		IMO4		MPB1		MPB2		MP	
	Action Level	Limit Level	Action Level	Limit Level	Exceedance of Action	Exceedance of Limit Level	Exceedance of Action	Exceedance of Limit Level	Exceedance of Action	Exceedance of Limit Level	Exceedance of Action	Exceedance of Limit Level	Exceedance of Action	Exceedance of Limit Level	Exceedance of Action	Exceedance of Limit Level	Exceedance of Action	Exceedance of Limit Level
DO (Bottom)	4.2	4.0	7.1	7.1	N	N	N	N	N	N	N	N	N	N	N	N	N	N
DO (Depth-averaged)	3.3	2.5	7.2	7.2	N	N	N	N	N	N	N	N	N	N	N	N	N	N
Turbidity (Depth-averaged)	NA	NA	11.2	NA	N	N	N	N	N	N	N	N	N	N	N	N	N	N
SS (Depth-averaged)	24.0	37.0	7.2	7.2	N	N	N	N	N	N	N	N	N	N	N	N	N	N

Station		IMO4						Co-ordinates	
Time (hh:mm)	15:11-15:12						Northing	Easting	
Water Depth (m)	9.8						22.21.027	113.53.951	
Monitoring Depth (m)	1.0		4.9		8.8				
Trial	Trial 1	Trial 2	Trial 1	Trial 2	Trial 1	Trial 2	Depth-averaged	Bottom	
Water Temperature (°C)	16.5	16.5	16.4	16.4	16.4	16.4	16.45	-	
Salinity (ppt)	37.4	37.4	37.6	37.6	37.6	37.6	37.52	-	
pH	7.9	7.9	7.9	7.9	8.0	8.0	7.94	-	
D.O. Saturation (%)	93.8	94.8	93.4	94.8	94.9	92.0	93.95	-	
D.O. (mg/L)	7.3	7.4	7.3	7.4	7.4	7.2	7.32	7.28	
Turbidity (NTU)	5.5	4.9	6.6	6.1	7.0	7.1	6.20	-	
SS (mg/L)	10.0	13.0	6.0	7.0	6.0	6.0	16.00	-	
Remarks	Dredging works was observed.								

Station		MPB1							
Time (hh:mm)	15:26-15:27								
Water Depth (m)	9.0								
Monitoring Depth (m)	1.0		4.5		8.0				
Trial	Trial 1	Trial 2	Trial 1	Trial 2	Trial 1	Trial 2	Depth-averaged	Bottom	
Water Temperature (°C)	16.7	16.7	16.6	16.5	16.5	16.6	16.59	-	
Salinity (ppt)	37.1	37.0	37.3	37.3	37.5	37.4	37.25	-	
pH	7.9	7.9	7.9	8.0	8.0	7.9	7.93	-	
D.O. Saturation (%)	93.2	92.0	92.9	91.0	88.9	92.4	91.73	-	
D.O. (mg/L)	7.3	7.2	7.2	7.1	6.9	7.2	7.14	7.05	
Turbidity (NTU)	8.4	8.4	8.8	8.7	9.8	9.4	8.92	-	
SS (mg/L)	8.0	10.0	5.0	6.0	5.0	6.0	6.67	-	
Remarks	Dredging works was observed.								

Station		MPB2							
Time (hh:mm)	15:04-15:05								
Water Depth (m)	9.8								
Monitoring Depth (m)	1.0		4.9		8.8				
Trial	Trial 1	Trial 2	Trial 1	Trial 2	Trial 1	Trial 2	Depth-averaged	Bottom	
Water Temperature (°C)	16.7	16.6	16.5	16.6	16.4	16.5	16.56	-	
Salinity (ppt)	37.0	37.0	37.3	37.3	37.6	37.4	37.27	-	
pH	7.9	7.9	7.9	7.9	7.9	7.9	7.91	-	
D.O. Saturation (%)	94.4	93.6	93.9	93.1	89.7	94.0	93.12	-	
D.O. (mg/L)	7.4	7.3	7.3	7.3	7.0	7.3	7.25	7.15	
Turbidity (NTU)	5.0	5.1	5.6	5.7	6.2	6.4	5.67	-	
SS (mg/L)	6.0	6.0	7.0	6.0	9.0	7.0	6.83	-	
Remarks	Dredging works was observed.								

Station		MP							
Time (hh:mm)	15:36-15:36								
Water Depth (m)	6.3								
Monitoring Depth (m)	1.0		3.1		5.3				
Trial	Trial 1	Trial 2	Trial 1	Trial 2	Trial 1	Trial 2	Depth-averaged	Bottom	
Water Temperature (°C)	16.6	16.6	16.6	16.6	16.6	16.6	16.55	-	
Salinity (ppt)	37.2	37.3	37.0	37.2	37.2	37.2	37.20	-	
pH	7.9	7.9	7.9	7.9	7.9	7.9	7.89	-	
D.O. Saturation (%)	92.6	93.5	93.4	92.0	90.5	93.2	92.53	-	
D.O. (mg/L)	7.2	7.3	7.3	7.2	7.1	7.3	7.21	7.16	
Turbidity (NTU)	5.8	5.7	5.8	5.5	6.2	5.8	5.80	-	
SS (mg/L)	9.0	11.0	-	-	7.0	10.0	9.25	-	
Remarks	Dredging works was observed.								

