




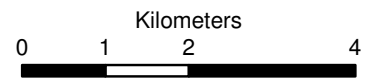
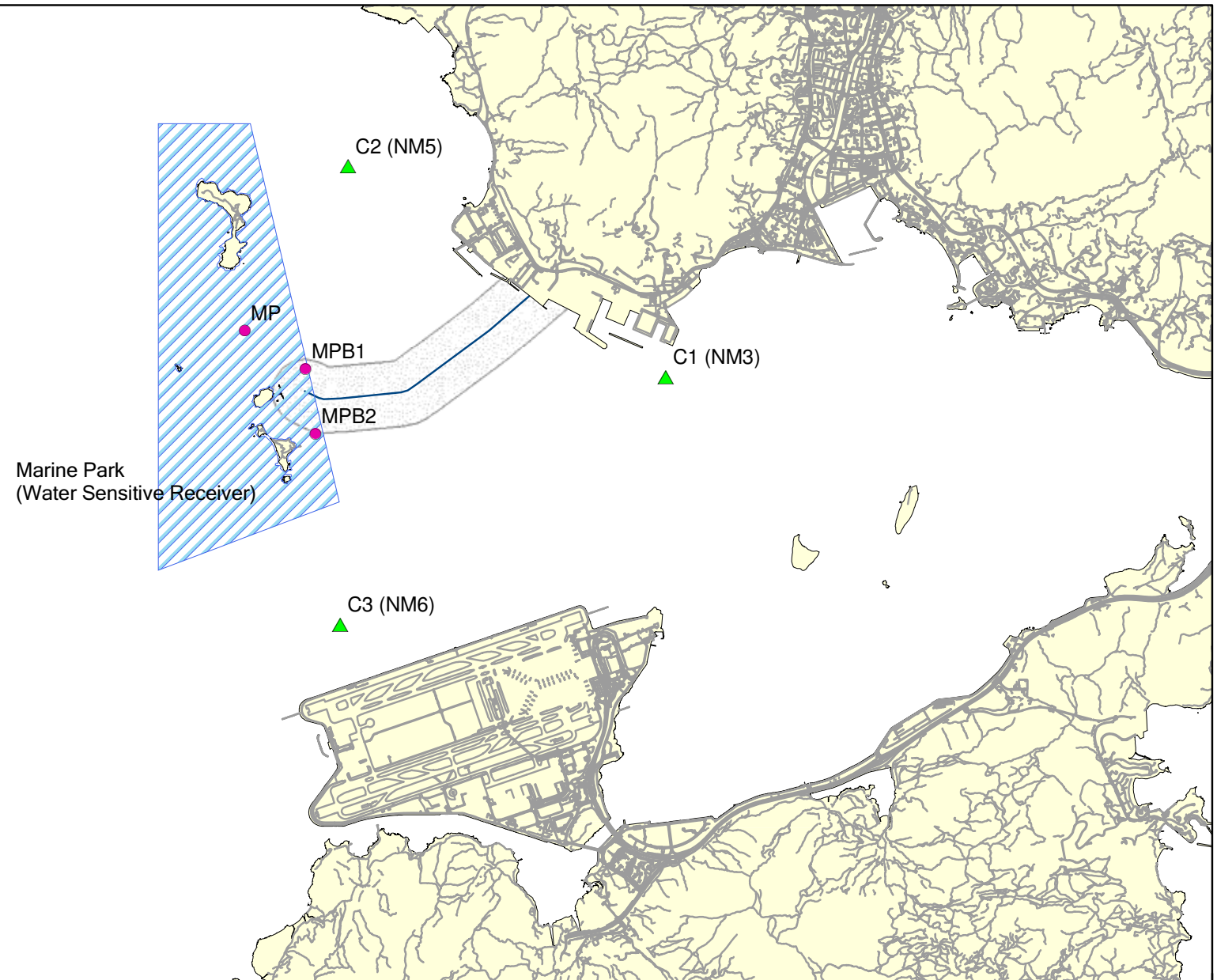


**KEY**

-  Control Stations
-  Impact Stations
-  Marine Park
-  Proposed Pipeline
-  Potential IMO1 & IMO2 Monitoring Zone



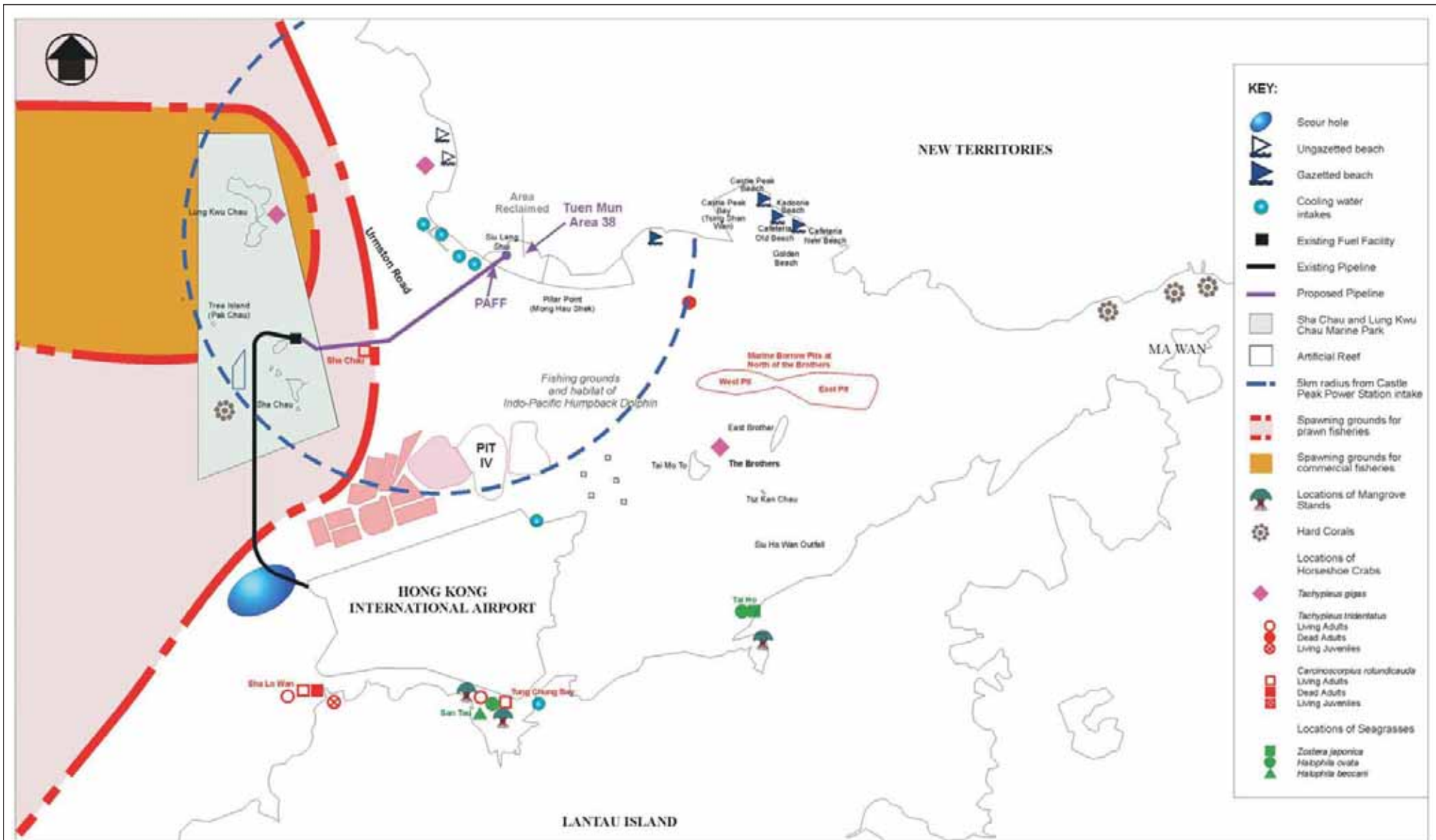
Annex B

Water Sensitive Receiver and Water Quality Monitoring Locations

File: 0018105\_4.mxd  
Date: 23/01/2006

Environmental  
Resources  
Management





Annex B

Water Quality and Ecological Sensitive Receivers

FILE: C2475aa  
DATE: 12/11/2007

(Source : PAFF for Hong Kong International Airport EIA, Mouchel 2002)

Environmental  
Resources  
Management

