

Annex F

## Impact Water Quality Monitoring Results

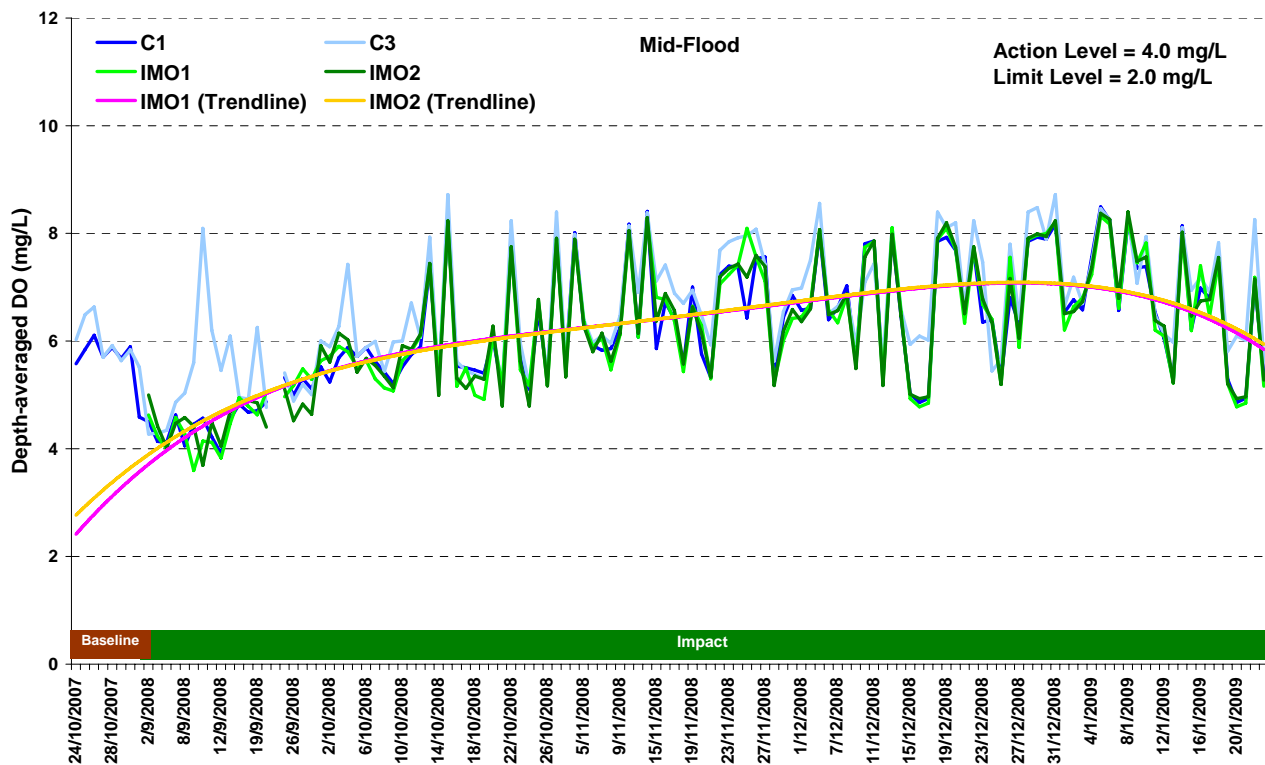
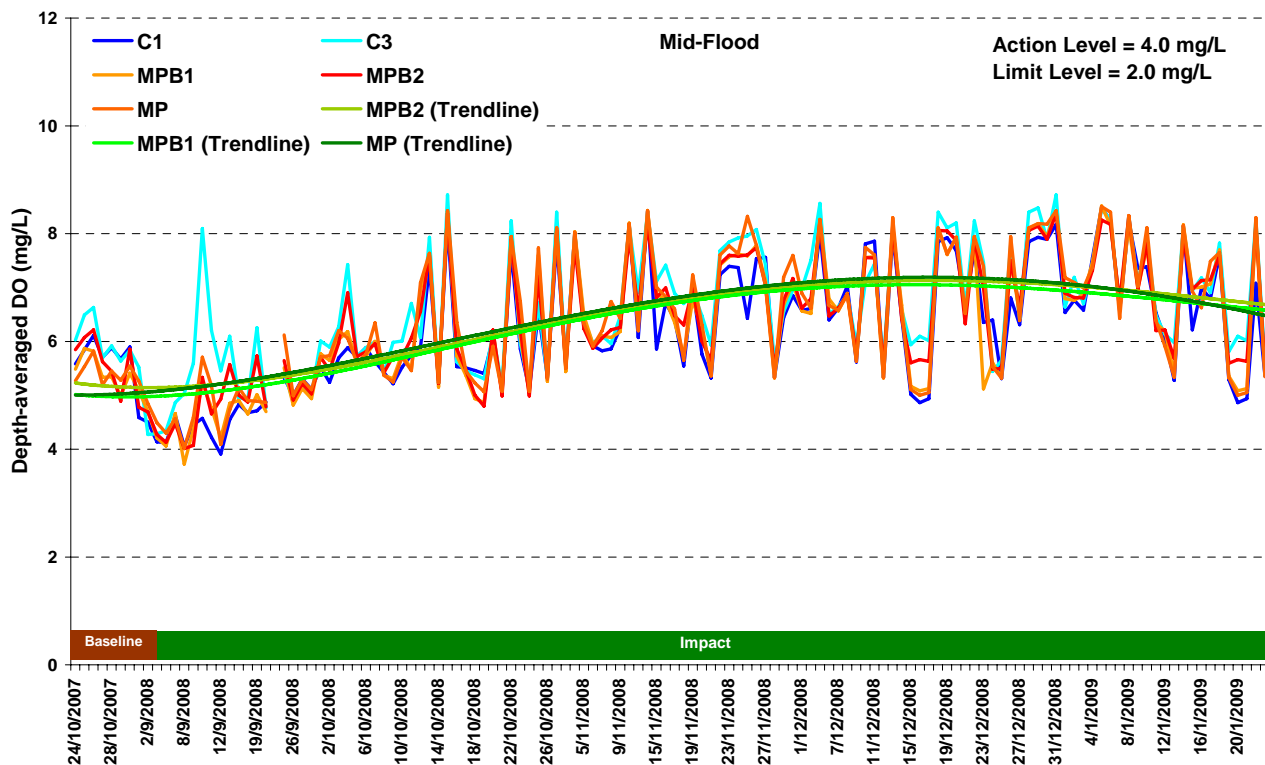


Figure G1 Dissolved oxygen concentration (depth-averaged) (mg/L) of water samples from the seven sampling locations at mid-flood between 1 September 2008 and 23 January 2009.

Ref: 0018105\_Annex G\_water graphs.doc



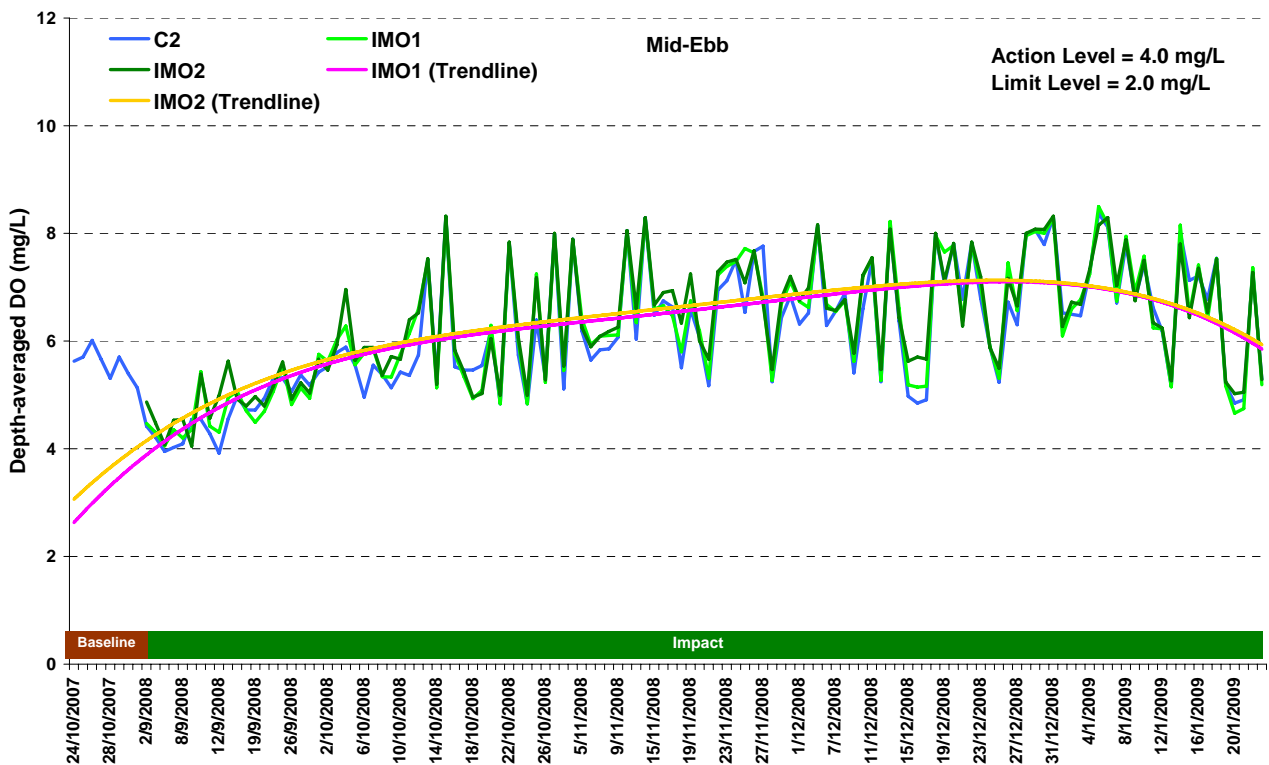
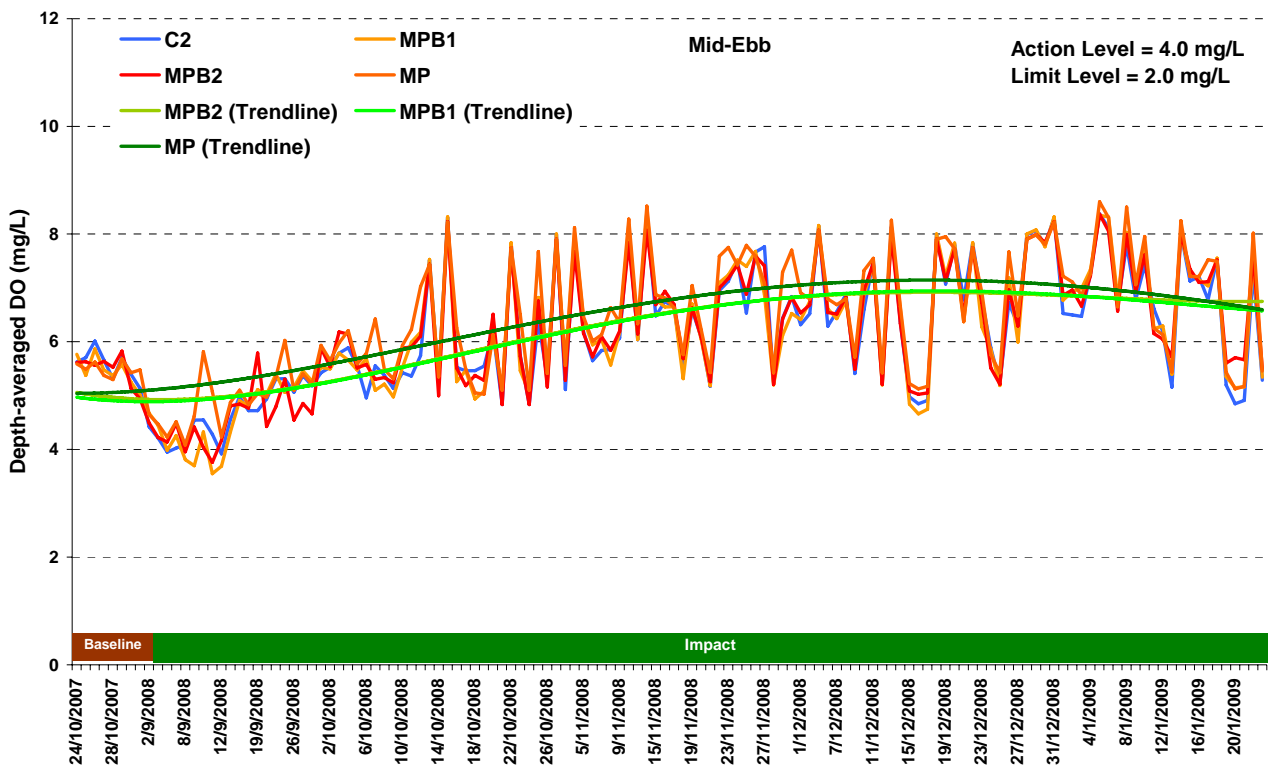


Figure G2 Dissolved oxygen concentration (depth-averaged) (mg/L) of water samples from the six sampling locations at mid-ebb between 1 September 2008 and 23 January 2009.

Ref: 0018105\_Annex G\_water graphs.doc



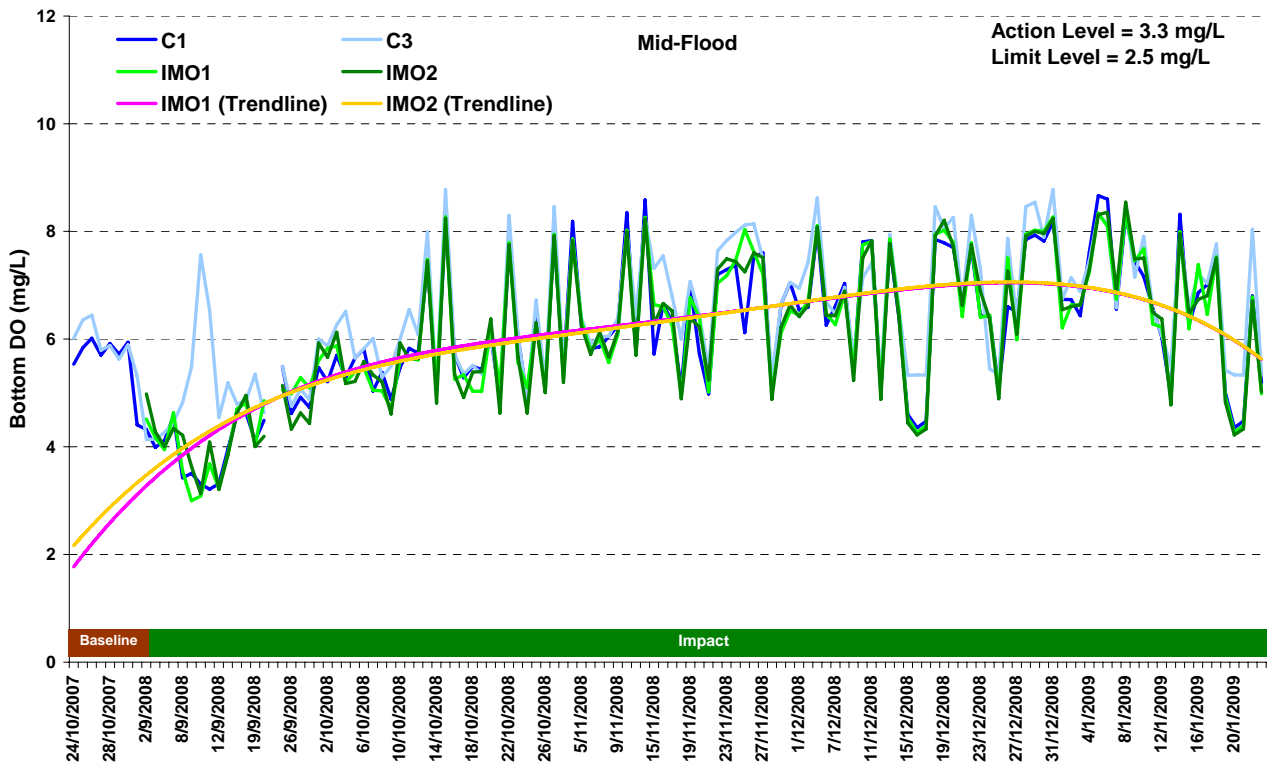
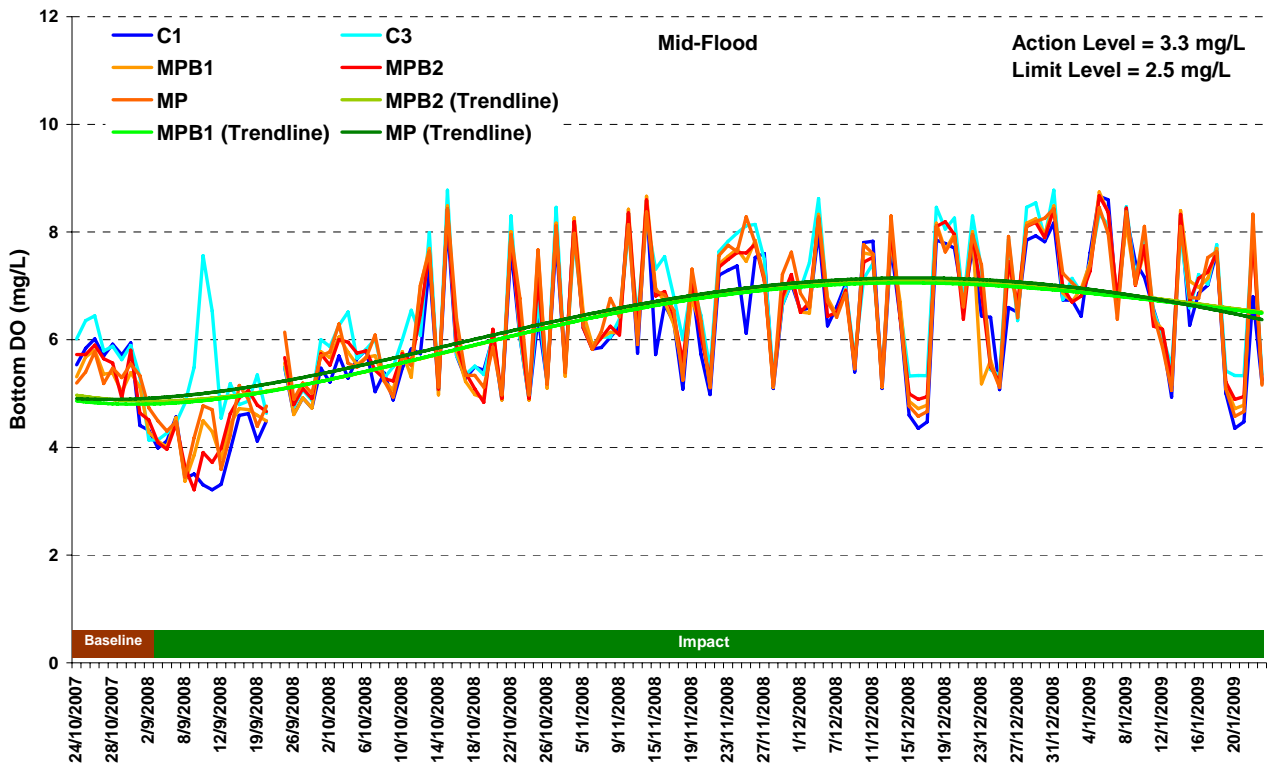


Figure G3 Dissolved oxygen concentration (bottom) (mg/L) of water samples from the seven sampling locations at mid-flood between 1 September 2008 and 23 January 2009.



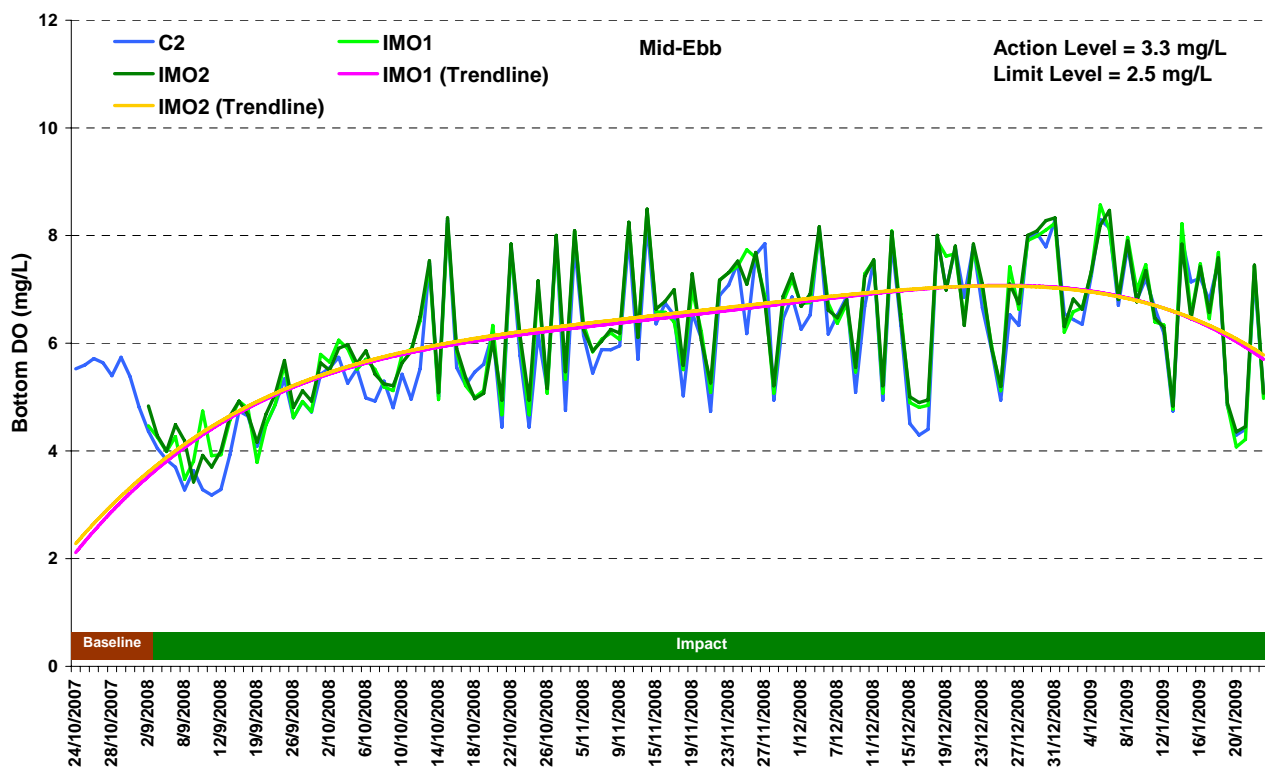
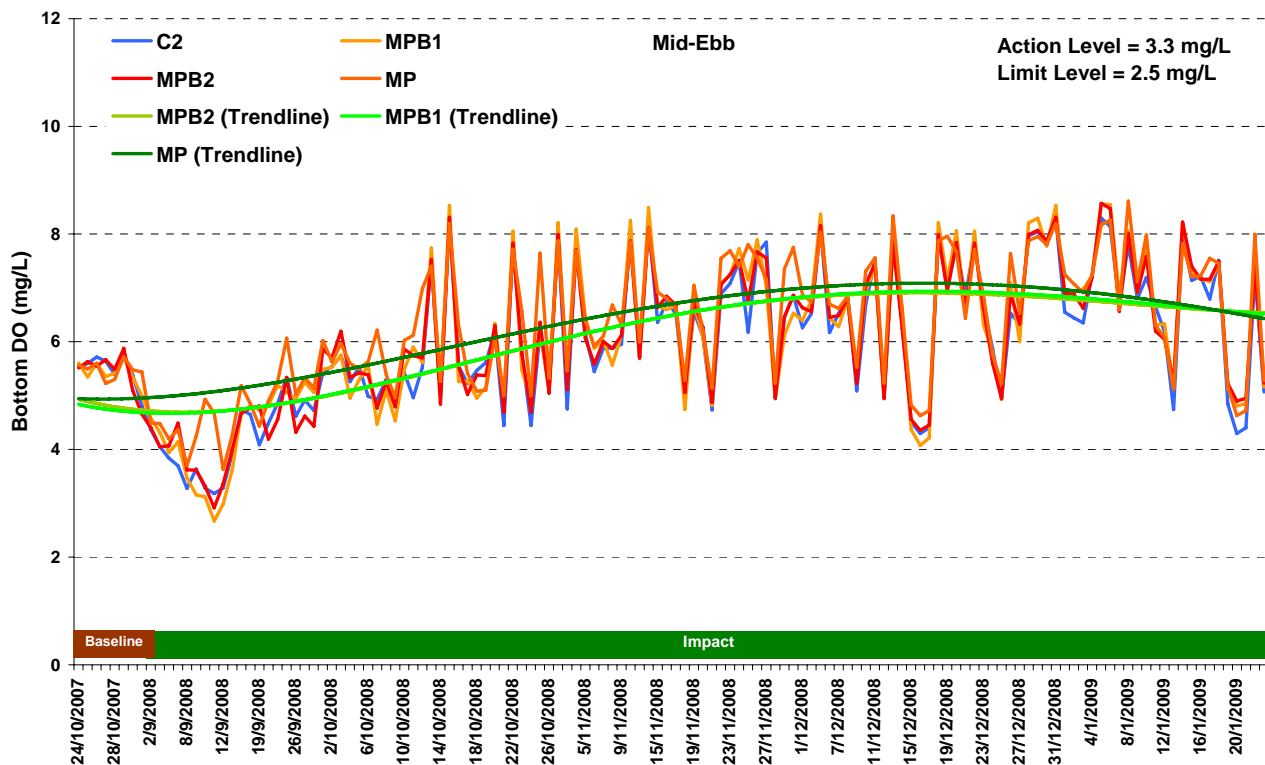


Figure G4 Dissolved oxygen concentration (bottom) (mg/L) of water samples from the six sampling locations at mid-ebb between 1 September 2008 and 23 January 2009.



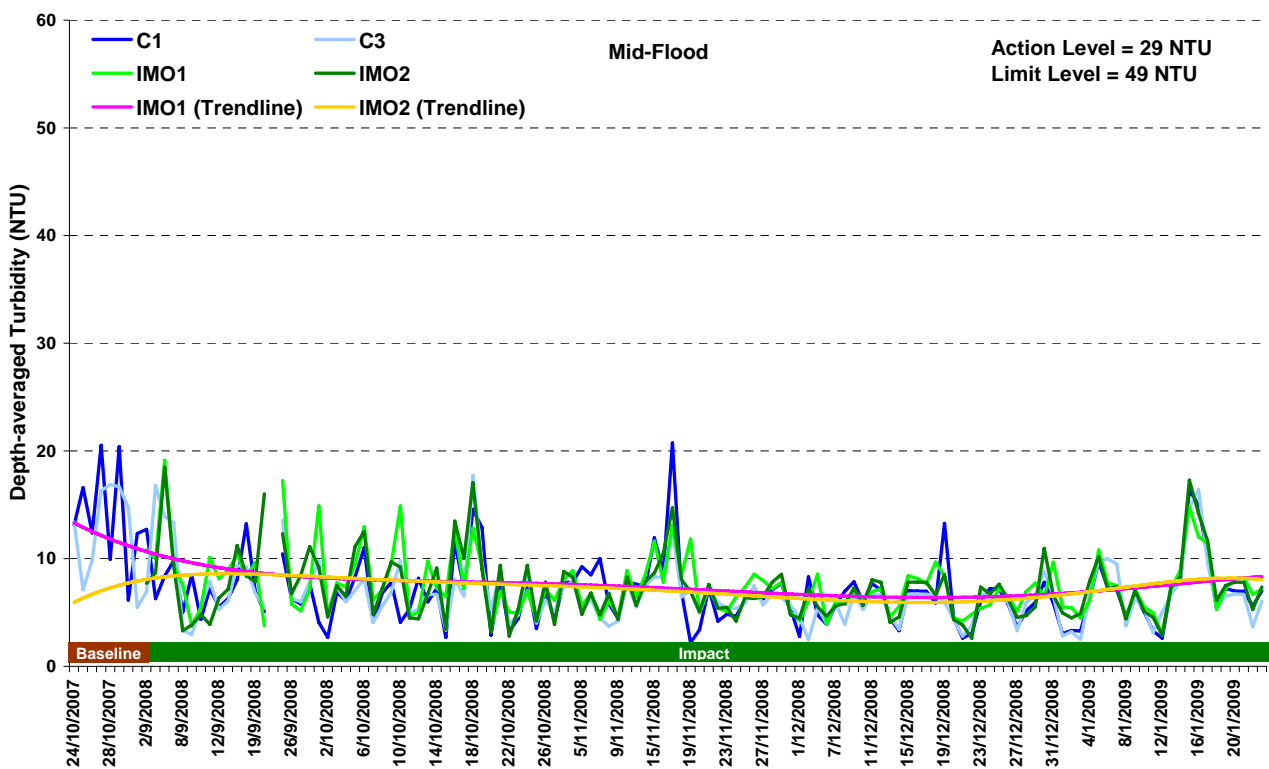
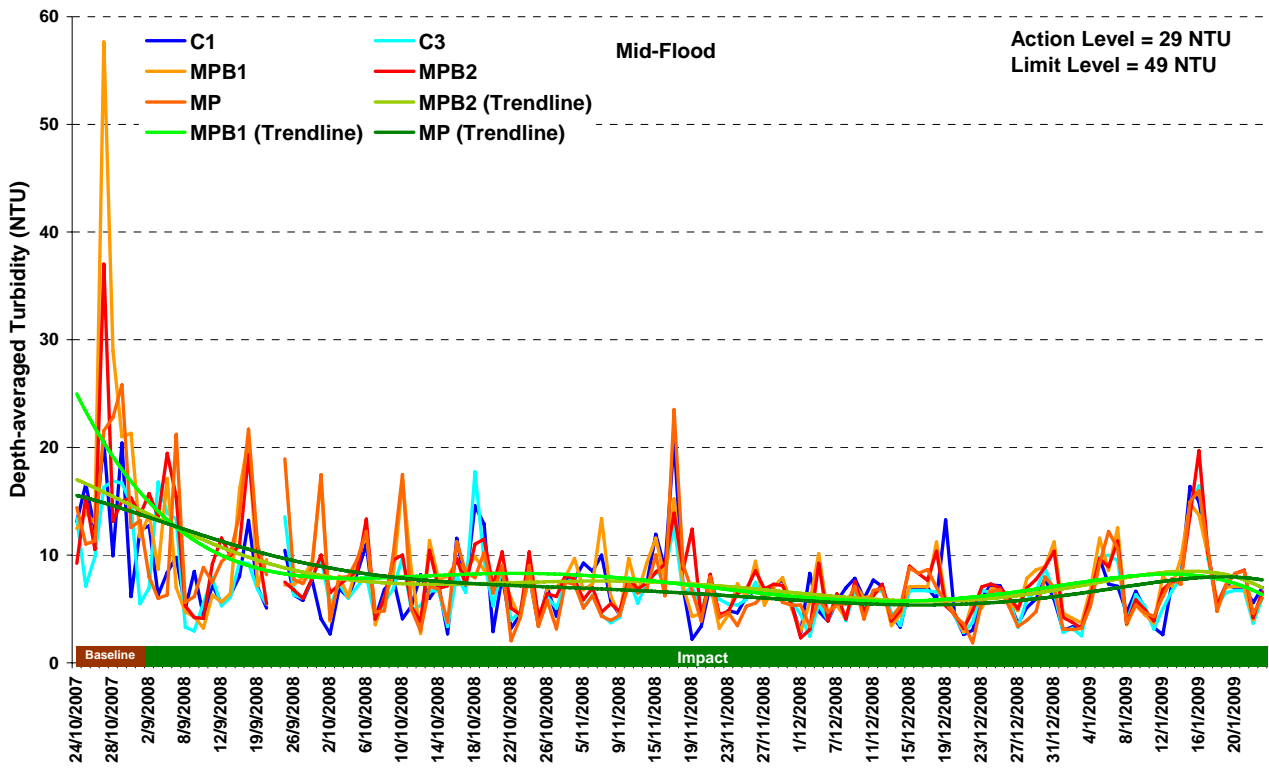


Figure G5 Depth-averaged turbidity (NTU) of water samples from the seven sampling locations at mid-flood between 1 September 2008 and 23 January 2009.



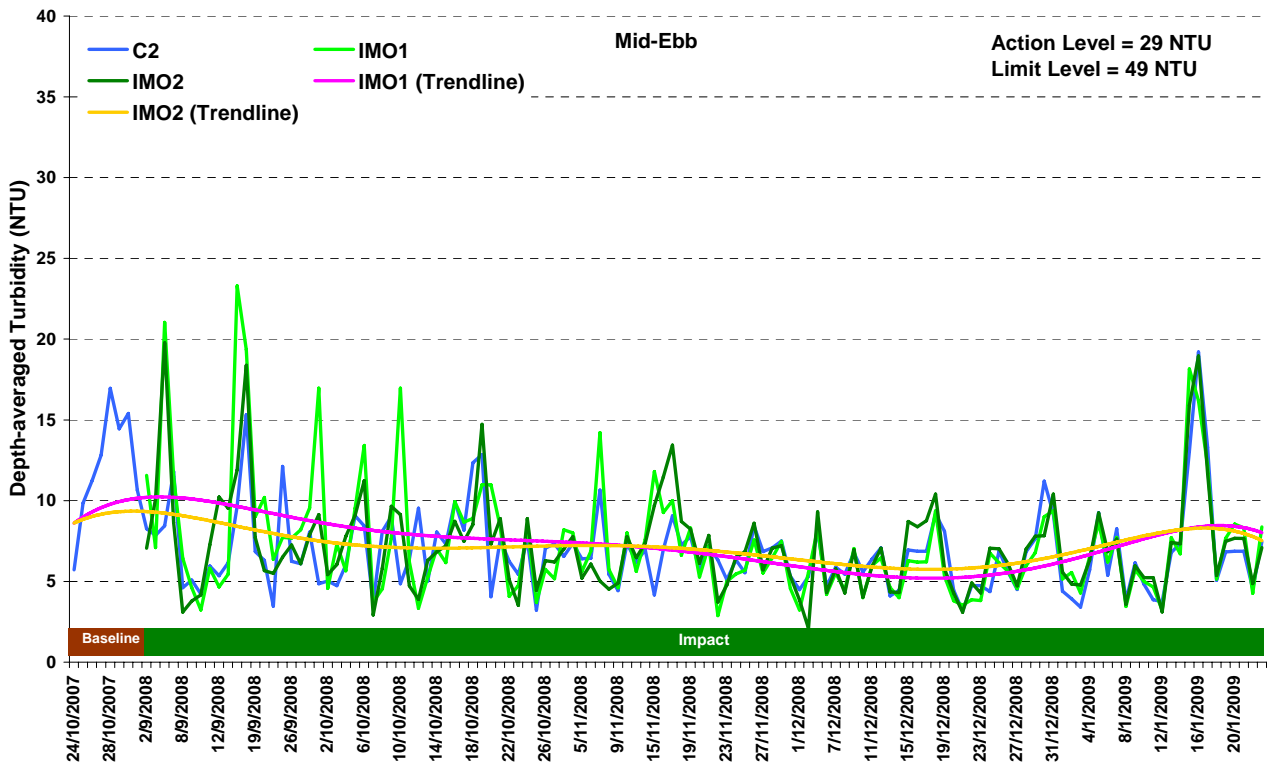
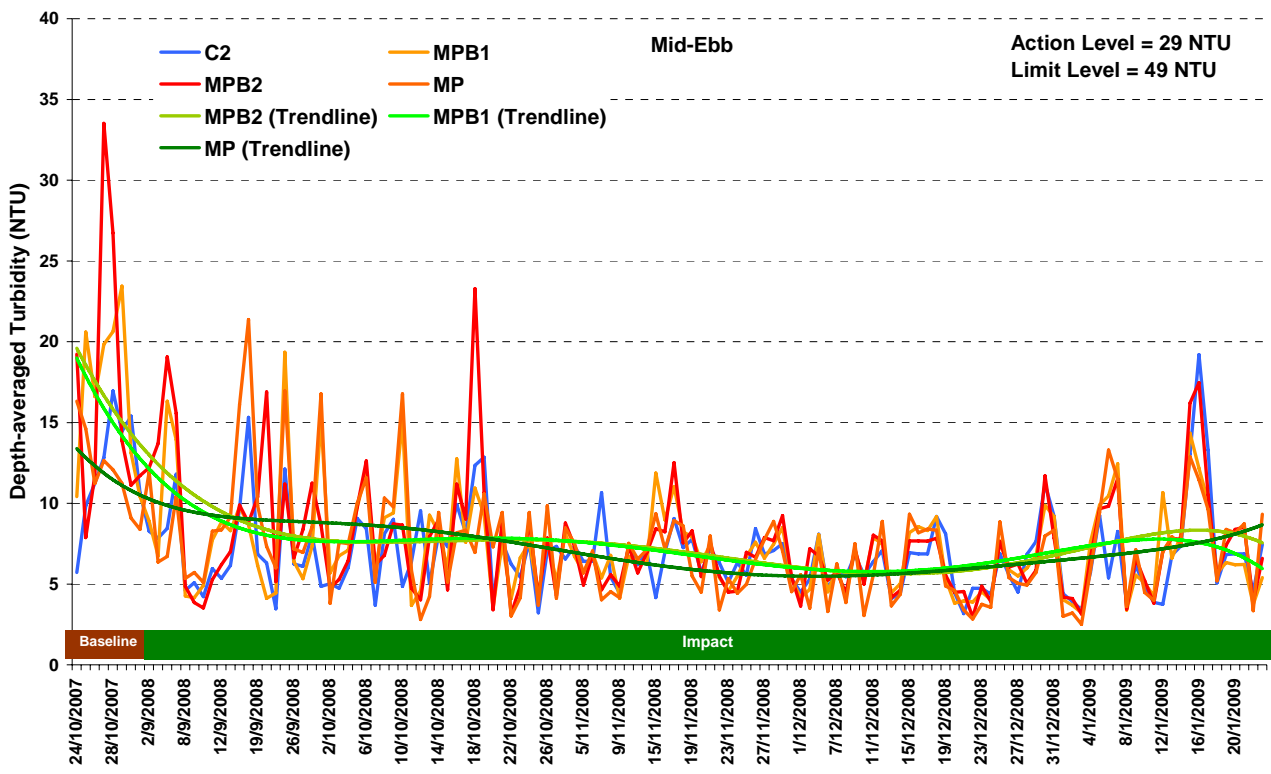


Figure G5 Depth-averaged turbidity (NTU) of water samples from the six sampling locations at mid-ebb between 1 September 2008 and 23 January 2009.



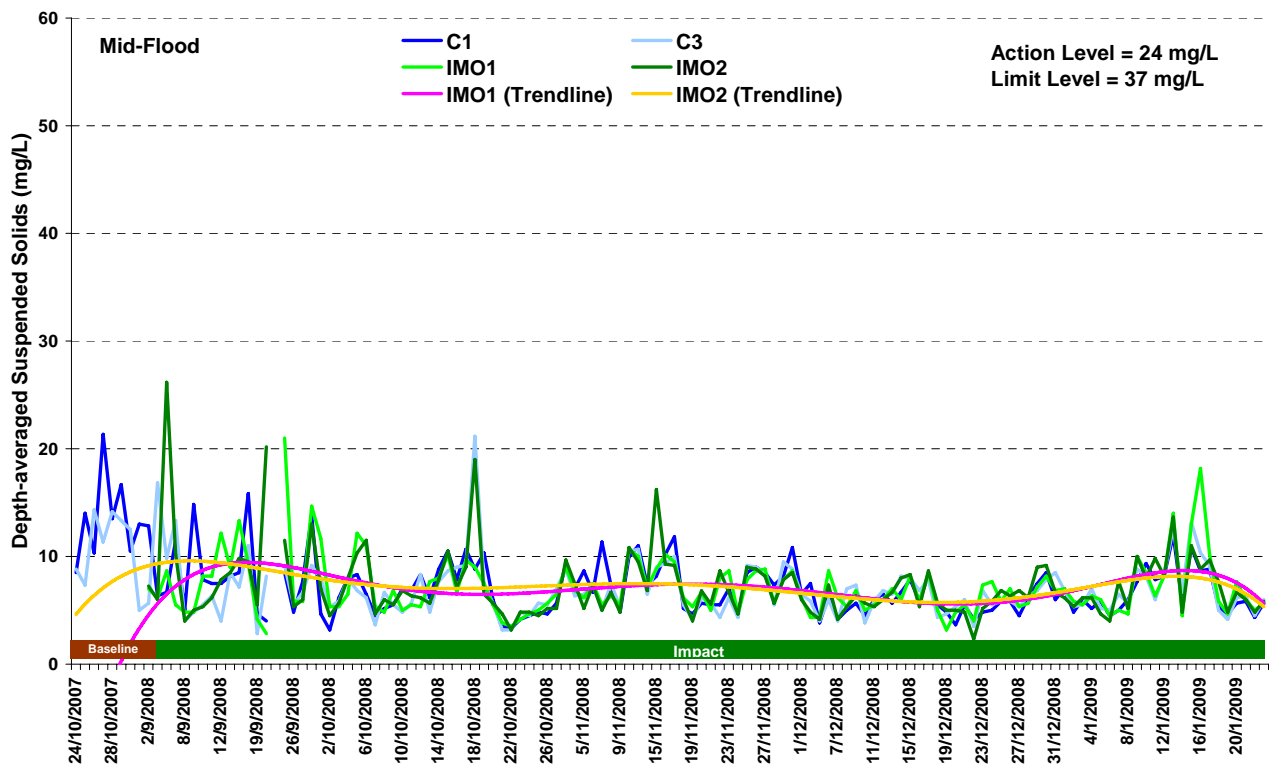
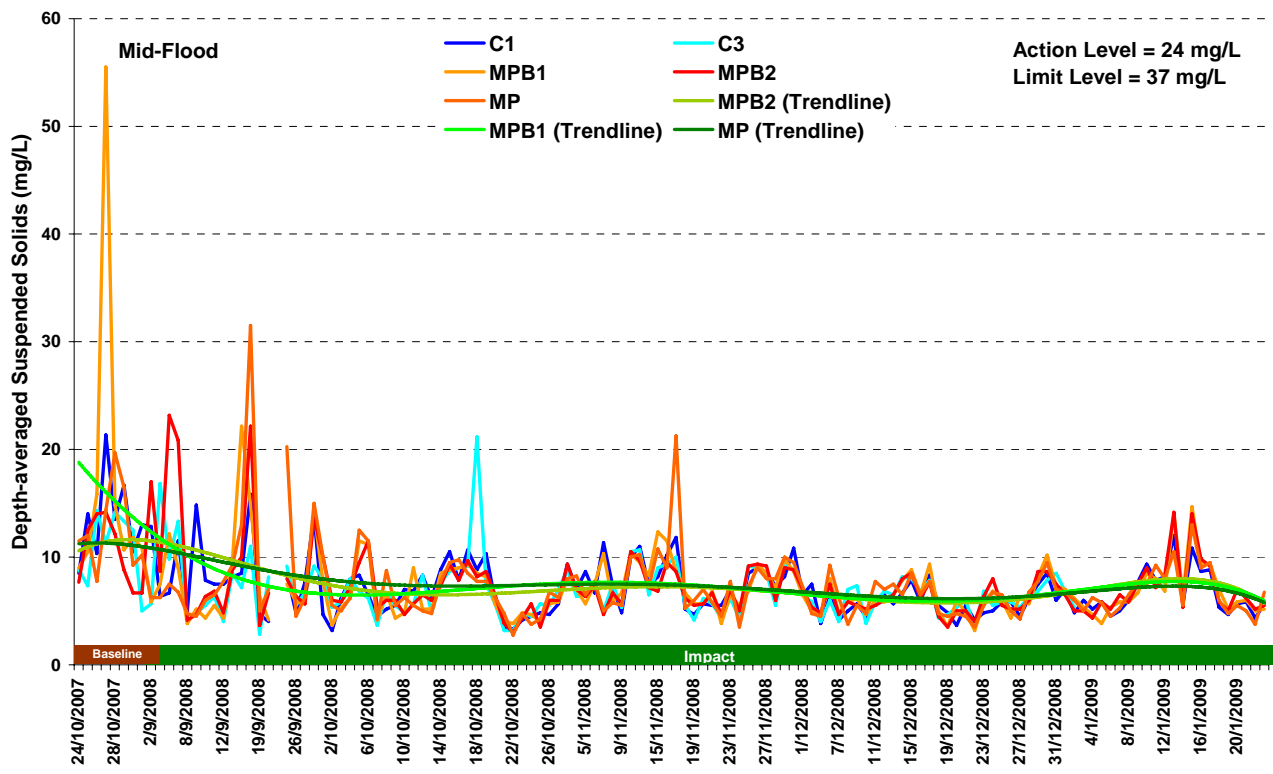


Figure G4 Depth-averaged suspended solids concentration (mg/L) of water samples from the seven sampling locations at mid-flood between 1 September 2008 and 23 January 2009.





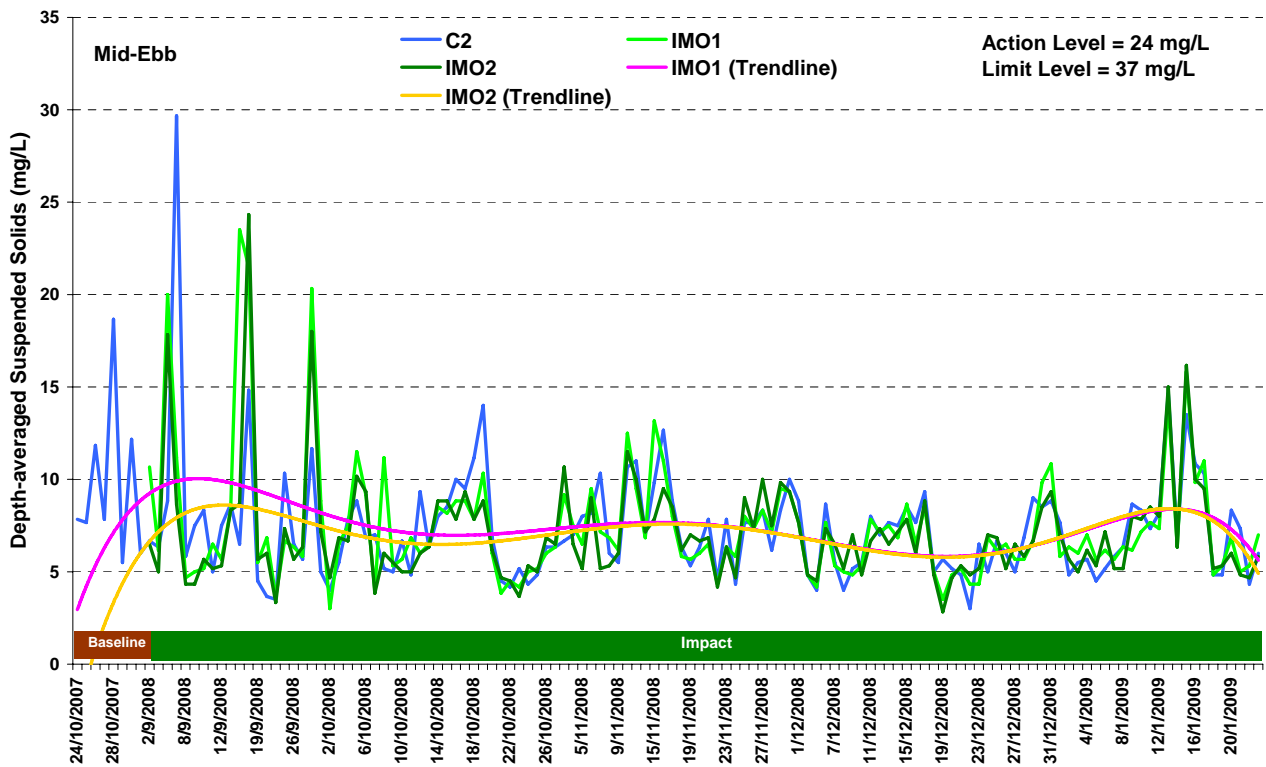
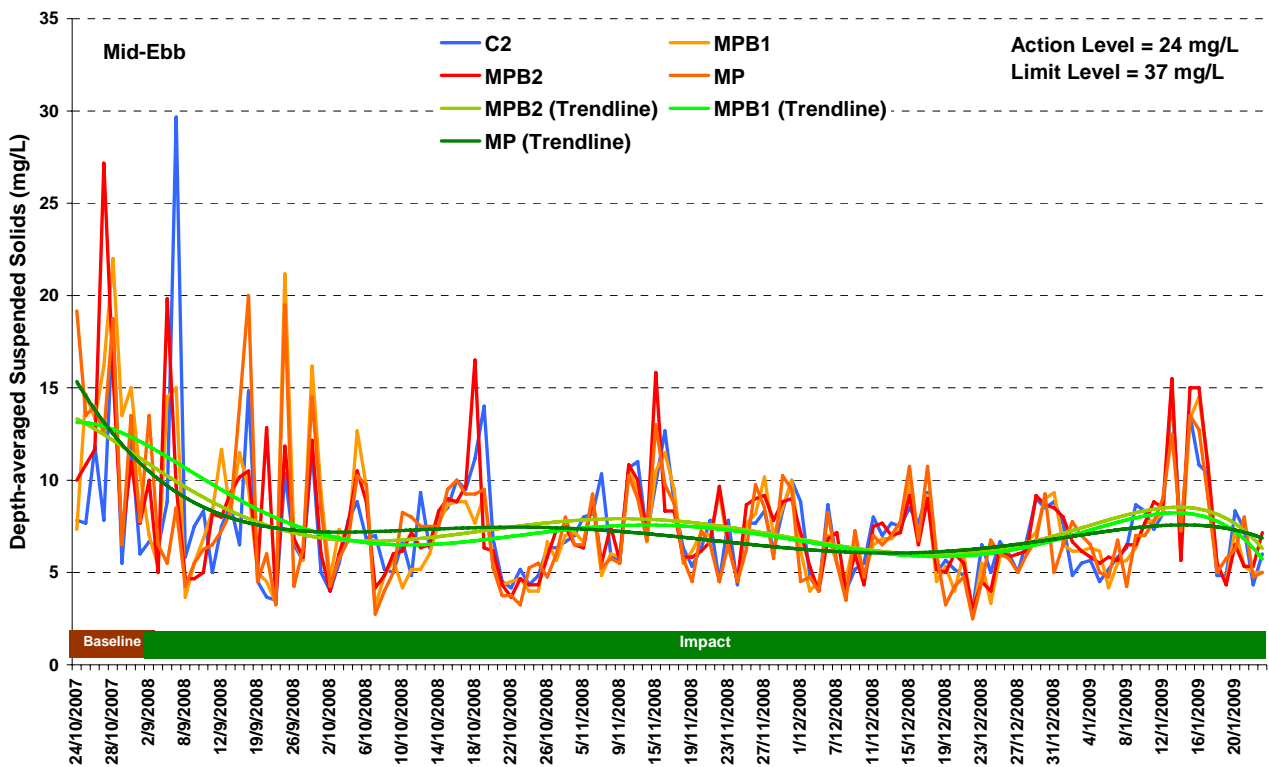


Figure G4 Depth-averaged suspended solids concentration (mg/L) of water samples from the six sampling locations at mid-ebb between 1 September 2008 and 23 January 2009.

