

Sampling Date	11/13/2009
Weather & Ambient Temperature	Cloudy, 27C

Station	C2 (NM5)								
Time (hh:mm)	12:08-12:10								
Water Depth (m)	19.2								
Monitoring Depth (m)	1.0		9.6		18.2				
Trial	Trial 1	Trial 2	Trial 1	Trial 2	Trial 1	Trial 2	Depth-averaged	Bottom	
Water Temperature (°C)	25.7	25.7	25.8	25.9	25.8	25.9	25.81	-	
Salinity (ppt)	28.5	29.8	31.8	31.6	31.8	31.8	30.88	-	
pH	8.0	8.1	8.0	8.1	8.0	8.1	8.05	-	
D.O. Saturation (%)	77.6	77.1	77.5	74.8	80.8	75.3	77.18	-	
D.O. (mg/L)	5.4	5.3	5.3	5.1	5.5	5.1	5.28	5.31	
Turbidity (NTU)	9.0	8.8	8.9	8.6	8.7	8.5	8.75	-	
SS (mg/L)	12.0	12.0	9.0	11.0	9.0	9.0	10.33	-	
Remarks	Dredging works was observed.								

Station	IMO1							Co-ordinates	
Time (hh:mm)	11:17-11:18							Northing	Easting
Water Depth (m)	16.2							22.21.912	113.55.457
Monitoring Depth (m)	1.0		8.1		15.2				
Trial	Trial 1	Trial 2	Trial 1	Trial 2	Trial 1	Trial 2	Depth-averaged	Bottom	
Water Temperature (°C)	25.6	25.5	26.4	26.4	26.2	25.9	26.00	-	
Salinity (ppt)	30.6	30.4	32.1	32.0	32.2	32.3	31.61	-	
pH	8.0	8.1	8.1	8.1	8.1	8.1	8.10	-	
D.O. Saturation (%)	84.8	82.2	78.8	80.6	77.4	82.3	81.02	-	
D.O. (mg/L)	6.2	6.0	5.6	5.7	5.5	5.89	5.82	5.71	
Turbidity (NTU)	15.8	15.0	12.6	13.6	9.6	10.5	12.85	-	
SS (mg/L)	19.0	19.0	17.0	18.0	20.0	24.0	19.50	-	
Remarks	Dredging works was observed.								

Station	IMO2							Co-ordinates	
Time (hh:mm)	11:26-11:28							Northing	Easting
Water Depth (m)	20.8							22.21.795	113.55.133
Monitoring Depth (m)	1.0		10.4		19.8				
Trial	Trial 1	Trial 2	Trial 1	Trial 2	Trial 1	Trial 2	Depth-averaged	Bottom	
Water Temperature (°C)	25.7	25.6	26.0	25.8	25.8	25.9	25.77	-	
Salinity (ppt)	30.3	30.1	31.9	31.9	28.3	32.1	30.78	-	
pH	8.1	8.0	8.1	8.1	8.1	8.1	8.09	-	
D.O. Saturation (%)	81.6	84.6	75.4	75.9	74.6	75.0	77.85	-	
D.O. (mg/L)	5.6	5.8	5.1	5.2	5.2	5.09	5.33	5.14	
Turbidity (NTU)	13.5	13.6	9.7	9.2	8.4	8.5	10.48	-	
SS (mg/L)	16.0	18.0	11.0	9.0	13.0	12.0	13.17	-	
Remarks	Dredging works was observed.								

Station	IMO3							Co-ordinates	
Time (hh:mm)								Northing	Easting
Water Depth (m)									
Monitoring Depth (m)									
Trial	Trial 1	Trial 2	Trial 1	Trial 2	Trial 1	Trial 2	Depth-averaged	Bottom	
Water Temperature (°C)	-	-	-	-	-	-	-	-	
Salinity (ppt)	-	-	-	-	-	-	-	-	
pH	-	-	-	-	-	-	-	-	
D.O. Saturation (%)	-	-	-	-	-	-	-	-	
D.O. (mg/L)	-	-	-	-	-	-	-	-	
Turbidity (NTU)	-	-	-	-	-	-	-	-	
SS (mg/L)	-	-	-	-	-	-	-	-	
Remarks	No dredger relating to this station in operation								

Mid-Ebb

Station	IMO4							Co-ordinates	
Time (hh:mm)								Northing	Easting
Water Depth (m)									
Monitoring Depth (m)									
Trial	Trial 1	Trial 2	Trial 1	Trial 2	Trial 1	Trial 2	Depth-averaged	Bottom	
Water Temperature (°C)	-	-	-	-	-	-	-	-	
Salinity (ppt)	-	-	-	-	-	-	-	-	
pH	-	-	-	-	-	-	-	-	
D.O. Saturation (%)	-	-	-	-	-	-	-	-	
D.O. (mg/L)	-	-	-	-	-	-	-	-	
Turbidity (NTU)	-	-	-	-	-	-	-	-	
SS (mg/L)	-	-	-	-	-	-	-	-	
Remarks	No dredger relating to this station in operation								

Station	MPB1								
Time (hh:mm)	12:32-12:33								
Water Depth (m)	7.4								
Monitoring Depth (m)	1.0		3.7		6.4				
Trial	Trial 1	Trial 2	Trial 1	Trial 2	Trial 1	Trial 2	Depth-averaged	Bottom	
Water Temperature (°C)	25.6	25.6	25.7	25.7	25.6	25.7	25.64	-	
Salinity (ppt)	30.0	29.4	31.0	30.7	30.9	31.3	30.53	-	
pH	8.0	8.0	8.0	8.1	8.0	8.0	8.02	-	
D.O. Saturation (%)	80.4	78.8	77.2	79.0	78.8	81.2	79.23	-	
D.O. (mg/L)	5.6	5.5	5.4	5.4	5.4	5.7	5.49	5.54	
Turbidity (NTU)	7.4	7.6	7.4	7.4	7.6	7.6	7.50	-	
SS (mg/L)	8.0	7.0	9.0	9.0	8.0	9.0	8.33	-	
Remarks	Dredging works was observed.								

Station	MPB2								
Time (hh:mm)	12:39-12:40								
Water Depth (m)	8.8								
Monitoring Depth (m)	1.0		4.4		7.8				
Trial	Trial 1	Trial 2	Trial 1	Trial 2	Trial 1	Trial 2	Depth-averaged	Bottom	
Water Temperature (°C)	25.6	25.6	25.7	25.6	25.6	25.7	25.62	-	
Salinity (ppt)	31.1	29.6	31.0	31.0	30.9	31.0	30.78	-	
pH	8.1	8.0	8.1	8.0	8.0	8.1	8.04	-	
D.O. Saturation (%)	77.9	77.2	77.1	77.4	77.2	76.6	77.23	-	
D.O. (mg/L)	5.3	5.3	5.3	5.3	5.3	5.2	5.30	5.27	
Turbidity (NTU)	10.3	10.3	11.7	11.1	11.1	11.6	11.02	-	
SS (mg/L)	12.0	12.0	12.0	14.0	19.0	19.0	14.67	-	
Remarks	Dredging works was observed.								

Station	MP								
Time (hh:mm)	12:25-12:26								
Water Depth (m)	5.2								
Monitoring Depth (m)	1.0		2.6		4.2				
Trial	Trial 1	Trial 2	Trial 1	Trial 2	Trial 1	Trial 2	Depth-averaged	Bottom	
Water Temperature (°C)	25.6	25.6	-	-	25.6	25.6	25.57	-	
Salinity (ppt)	30.2	30.4	-	-	30.4	30.6	30.39	-	
pH	8.0	8.0	-	-	8.0	8.0	8.01	-	
D.O. Saturation (%)	76.1	76.2	-	-	75.4	76.7	76.10	-	
D.O. (mg/L)	5.3	5.3	-	-	5.2	5.3	5.24	5.23	
Turbidity (NTU)	14.4	14.3	-	-	14.6	15.3	14.65	-	
SS (mg/L)	13.0	12.0	-	-	13.0	13.0	12.75	-	
Remarks	Dredging works was observed.								

Compliance with Action and Limit Level

Parameter	As in EM&A		C2*130%		IMO1		IMO2		IMO3		IMO4		MPB1		MPB2		MP	
	Action Level	Limit Level	Action Level	Limit Level	Exceedance of Action	Exceedance of Limit Level	Exceedance of Action Level	Exceedance of Limit Level	Exceedance of Action Level	Exceedance of Limit Level	Exceedance of Action Level	Exceedance of Limit Level	Exceedance of Action Level	Exceedance of Limit Level	Exceedance of Action Level	Exceedance of Limit Level	Exceedance of Action Level	Exceedance of Limit Level
DO (Bottom)	3.3	2.5	5.3	5.3	N	N	N	N	-	-	-	-	N	N	N	N	N	N
DO (Depth-averaged)	4.2	4.0	5.3	5.3	N	N	N	N	-	-	-	-	N	N	N	N	N	N
Turbidity (Depth-averaged)	29.0	49.0	11.4	11.4	N	N	N	N	-	-	-	-	N	N	N	N	N	N
SS (Depth-averaged)	24.0	37.0	13.4	13.4	N	N	N	N	-	-	-	-	N	N	N	N	N	N

Sampling Date	11/13/2009
Weather & Ambient Temperature	Fine, 26C

Mid-Flood

Station	C1 (NM3)								
Time (hh:mm)	17:03-17:04								
Water Depth (m)	16.0								
Monitoring Depth (m)	1.0		8.0		15.0				
Trial	Trial 1	Trial 2	Trial 1	Trial 2	Trial 1	Trial 2	Depth-averaged	Bottom	
Water Temperature (°C)	25.2	25.2	25.3	25.3	25.4	25.3	25.28	-	
Salinity (ppt)	31.6	32.0	32.6	32.7	32.8	32.8	32.41	-	
pH	8.2	8.1	8.1	8.1	8.1	8.1	8.12	-	
D.O. Saturation (%)	65.0	63.8	64.6	62.3	65.8	62.9	64.07	-	
D.O. (mg/L)	4.5	4.4	4.4	4.3	4.5	4.3	4.38	4.39	
Turbidity (NTU)	9.6	9.1	15.2	15.5	15.2	15.6	13.37	-	
SS (mg/L)	5.0	5.0	5.0	5.0	26.0	24.0	11.67	-	
Remarks	Dredging works was observed.								

Station	C3 (NM6)								
Time (hh:mm)	15:26-15:27								
Water Depth (m)	6.4								
Monitoring Depth (m)	1.0		3.2		5.4				
Trial	Trial 1	Trial 2	Trial 1	Trial 2	Trial 1	Trial 2	Depth-averaged	Bottom	
Water Temperature (°C)	25.2	25.2	25.2	25.2	25.2	25.2	25.22	-	
Salinity (ppt)	30.0	29.8	30.1	30.0	30.1	30.1	30.00	-	
pH	8.1	8.1	8.1	8.1	8.1	8.0	8.06	-	
D.O. Saturation (%)	79.1	79.5	79.6	79.7	78.3	80.0	79.37	-	
D.O. (mg/L)	5.7	5.7	5.7	5.7	5.6	5.8	5.72	5.70	
Turbidity (NTU)	13.6	14.5	14.4	14.9	15.5	15.4	14.72	-	
SS (mg/L)	14.0	15.0	15.0	16.0	22.0	23.0	17.50	-	
Remarks	Dredging works was observed.								

Station	IMO1							Co-ordinates	
Time (hh:mm)	16:47-16:49							Northing	Easting
Water Depth (m)	17.0							22.21.798	113.55.565
Monitoring Depth (m)	1.0		8.5		16.0				
Trial	Trial 1	Trial 2	Trial 1	Trial 2	Trial 1	Trial 2	Depth-averaged	Bottom	
Water Temperature (°C)	25.4	25.4	25.4	25.4	25.4	25.4	25.38	-	
Salinity (ppt)	32.6	32.6	32.8	32.8	32.9	32.8	32.73	-	
pH	8.2	8.1	8.1	8.2	8.2	8.1	8.14	-	
D.O. Saturation (%)	61.6	61.3	60.6	61.3	62.2	60.5	61.25	-	
D.O. (mg/L)	4.2	4.2	4.1	4.2	4.2	4.1	4.18	4.18	
Turbidity (NTU)	18.8	19.5	28.1	28.5	28.6	28.3	25.30	-	
SS (mg/L)	22.0	24.0	22.0	20.0	27.0	24.0	23.17	-	
Remarks	Dredging works was observed.								

Station	IMO2							Co-ordinates	
Time (hh:mm)	16:23-16:25							Northing	Easting
Water Depth (m)	21.2							22.21.934	113.55.107
Monitoring Depth (m)	1.0		10.6		20.2				
Trial	Trial 1	Trial 2	Trial 1	Trial 2	Trial 1	Trial 2	Depth-averaged	Bottom	
Water Temperature (°C)	25.3	25.3	25.4	25.4	25.4	25.4	25.36	-	
Salinity (ppt)	32.5	32.4	32.6	32.5	32.9	33.0	32.64	-	
pH	8.2	8.1	8.2	8.1	8.2	8.1	8.13	-	
D.O. Saturation (%)	63.9	63.5	60.8	60.6	64.3	58.9	62.00	-	
D.O. (mg/L)	4.4	4.3	4.2	4.1	4.4	4.0	4.23	4.19	
Turbidity (NTU)	10.1	10.8	17.6	17.1	18.8	18.2	15.43	-	
SS (mg/L)	16.0	12.0	17.0	21.0	13.0	12.0	15.17	-	
Remarks	Dredging works was observed.								

Station	IMO3							Co-ordinates	
Time (hh:mm)	16:42-16:43							Northing	Easting
Water Depth (m)	19.8							22.21.739	113.55.478
Monitoring Depth (m)	1.0		9.9		18.8				
Trial	Trial 1	Trial 2	Trial 1	Trial 2	Trial 1	Trial 2	Depth-averaged	Bottom	
Water Temperature (°C)	25.3	25.3	25.4	25.4	25.4	25.4	25.35	-	
Salinity (ppt)	32.2	32.1	32.8	32.6	32.1	32.9	32.46	-	
pH	8.1	8.2	8.1	8.2	8.1	8.1	8.13	-	
D.O. Saturation (%)	60.6	62.2	57.4	61.0	58.3	62.9	60.40	-	
D.O. (mg/L)	4.2	4.3	3.9	4.2	4.0	4.3	4.13	4.14	
Turbidity (NTU)	12.7	12.7	17.2	17.1	18.1	18.5	16.05	-	
SS (mg/L)	9.0	9.0	18.0	18.0	20.0	17.0	15.17	-	
Remarks	No dredging works were observed.								

Station	IMO4							Co-ordinates	
Time (hh:mm)	16:31-16:32							Northing	Easting
Water Depth (m)	16.4							22.21.090	113.55.281
Monitoring Depth (m)	1.0		8.2		15.4				
Trial	Trial 1	Trial 2	Trial 1	Trial 2	Trial 1	Trial 2	Depth-averaged	Bottom	
Water Temperature (°C)	25.4	25.4	25.4	25.4	25.4	25.4	25.40	-	
Salinity (ppt)	32.6	32.5	32.6	32.6	32.6	32.6	32.60	-	
pH	8.1	8.2	8.1	8.2	8.2	8.1	8.14	-	
D.O. Saturation (%)	61.2	61.9	60.6	61.7	62.0	60.9	61.38	-	
D.O. (mg/L)	4.2	4.2	4.1	4.2	4.2	4.2	4.19	4.19	
Turbidity (NTU)	22.1	22.3	27.6	27.2	28.7	28.1	26.00	-	
SS (mg/L)	27.0	27.0	34.0	29.0	30.0	33.0	30.00	-	
Remarks	No dredging works were observed.								

Station	MPB1								
Time (hh:mm)	15:50-15:51								
Water Depth (m)	8.2								
Monitoring Depth (m)	1.0		4.1		7.2				
Trial	Trial 1	Trial 2	Trial 1	Trial 2	Trial 1	Trial 2	Depth-averaged	Bottom	
Water Temperature (°C)	25.3	25.2	25.3	25.3	25.3	25.3	25.25	-	
Salinity (ppt)	30.0	29.9	30.1	30.1	30.3	30.5	30.14	-	
pH	8.1	8.1	8.1	8.0	8.0	8.1	8.04	-	
D.O. Saturation (%)	68.8	68.4	68.9	68.3	70.6	69.1	69.02	-	
D.O. (mg/L)	4.8	4.8	4.8	4.7	4.9	4.8	4.78	4.84	
Turbidity (NTU)	13.7	13.1	23.2	23.3	26.5	27.1	21.15	-	
SS (mg/L)	13.0	13.0	9.0	8.0	9.0	9.0	10.17	-	
Remarks	Dredging works was observed.								

Station	MPB2								
Time (hh:mm)	15:42-15:43								
Water Depth (m)	8.3								
Monitoring Depth (m)	1.0		4.2		7.3				
Trial	Trial 1	Trial 2	Trial 1	Trial 2	Trial 1	Trial 2	Depth-averaged	Bottom	
Water Temperature (°C)	25.2	25.2	25.3	25.2	25.3	25.2	25.22	-	
Salinity (ppt)	29.4	29.5	29.7	29.7	30.5	30.7	29.89	-	
pH	8.0	8.1	8.1	8.0	8.0	8.1	8.04	-	
D.O. Saturation (%)	69.0	69.4	69.6	68.1	68.5	69.5	69.02	-	
D.O. (mg/L)	4.8	4.8	4.8	4.7	4.7	4.8	4.80	4.78	
Turbidity (NTU)	7.0	6.9	6.9	7.2	8.5	7.9	7.40	-	
SS (mg/L)	9.0	10.0	8.0	9.0	10.0	8.0	9.00	-	
Remarks	Dredging works was observed.								

Station	MP								
Time (hh:mm)	15:58-15:59								
Water Depth (m)	5.6								
Monitoring Depth (m)	1.0		2.8		4.6				
Trial	Trial 1	Trial 2	Trial 1	Trial 2	Trial 1	Trial 2	Depth-averaged	Bottom	
Water Temperature (°C)	25.2	25.2	-	-	25.2	25.2	25.22	-	
Salinity (ppt)	29.7	29.7	-	-	29.8	29.7	29.73	-	
pH	8.1	8.0	-	-	8.1	8.0	8.05	-	
D.O. Saturation (%)	67.6	67.4	-	-	67.5	68.3	67.70	-	
D.O. (mg/L)	4.7	4.7	-	-	4.7	4.8	4.71	4.72	
Turbidity (NTU)	11.2	11.6	-	-	13.9	13.1	12.45	-	
SS (mg/L)	11.0	13.0	-	-	10.0	11.0	11.25	-	
Remarks	Dredging works was observed.								

Compliance with Action and Limit Level

Parameter	As in EM&A		Mean (C1+C3)*130%		IMO1		IMO2		IMO3		IMO4		MPB1		MPB2		MP	
	Action Level	Limit Level	Action Level	Limit Level	Exceedance of Action	Exceedance of Limit Level	Exceedance of Action Level	Exceedance of Limit Level	Exceedance of Action Level	Exceedance of Limit Level	Exceedance of Action	Exceedance of Limit Level	Exceedance of Action	Exceedance of Limit Level	Exceedance of Action	Exceedance of Limit Level	Exceedance of Action Level	Exceedance of Limit Level
DO (Bottom)	3.3	2.5	5.0	5.0	N	N	N	N	N	N	N	N	N	N	N	N	N	N
DO (Depth-averaged)	4.2	4.0	5.0	5.0	Y	N	N	N	N	N	Y	N	N	N	N	N	N	N
Turbidity (Depth-averaged)	29.0	49.0	18.3	18.3	N	N	N	N	N	N	N	N	N	N	N	N	N	N
SS (Depth-averaged)	24.0	37.0	19.0	19.0	N	N	N	N	N	N	Y	N	N	N	N	N	N	N

Sampling Date	11/14/09
Weather & Ambient Temperature	Cloudy, 26C

Station	C2 (NM5)								
Time (hh:mm)	11:26-11:28								
Water Depth (m)	19.2								
Monitoring Depth (m)	1.0		9.6		18.2				
Trial	Trial 1	Trial 2	Trial 1	Trial 2	Trial 1	Trial 2	Depth-averaged	Bottom	
Water Temperature (°C)	24.4	24.3	24.8	24.8	24.8	24.8	24.66	-	
Salinity (ppt)	31.2	31.2	32.4	32.3	32.4	32.3	31.96	-	
pH	8.2	8.1	8.2	8.1	8.1	8.1	8.12	-	
D.O. Saturation (%)	63.5	65.5	63.7	69.8	64.4	74.1	66.83	-	
D.O. (mg/L)	4.7	4.9	4.7	5.1	4.7	5.4	4.90	5.05	
Turbidity (NTU)	6.1	6.0	7.2	7.1	7.7	7.6	6.95	-	
SS (mg/L)	7.0	7.0	12.0	12.0	8.0	9.0	9.17	-	
Remarks	Derrick lighters CM38 & CM83 (B21601V & B21784V) were in operation.								

Station	IMO1							Co-ordinates	
Time (hh:mm)	11:10-11:11							Northing	Easting
Water Depth (m)	20.6							22.21.964	113.55.178
Monitoring Depth (m)	1.0		10.3		19.6				
Trial	Trial 1	Trial 2	Trial 1	Trial 2	Trial 1	Trial 2	Depth-averaged	Bottom	
Water Temperature (°C)	25.0	25.0	25.0	25.0	25.2	25.2	25.07	-	
Salinity (ppt)	32.2	32.3	32.3	32.4	33.4	33.5	32.68	-	
pH	8.2	8.2	8.1	8.2	8.1	8.2	8.16	-	
D.O. Saturation (%)	55.6	54.9	53.1	54.8	53.3	55.6	54.55	-	
D.O. (mg/L)	3.8	3.8	3.7	3.8	3.6	3.8	3.74	3.71	
Turbidity (NTU)	13.4	13.4	12.8	12.7	10.1	9.9	12.05	-	
SS (mg/L)	20.0	18.0	20.0	17.0	17.0	16.0	18.00	-	
Remarks	Derrick lighters CM38 & CM83 (B21601V & B21784V) were in operation.								

Station	IMO2							Co-ordinates	
Time (hh:mm)	10:55-10:57							Northing	Easting
Water Depth (m)	20.2							22.21.724	113.55.389
Monitoring Depth (m)	1.0		10.1		19.2				
Trial	Trial 1	Trial 2	Trial 1	Trial 2	Trial 1	Trial 2	Depth-averaged	Bottom	
Water Temperature (°C)	24.4	24.4	24.9	24.9	25.2	25.2	24.84	-	
Salinity (ppt)	31.7	31.8	33.0	32.8	33.4	33.5	32.67	-	
pH	8.2	8.2	8.2	8.2	8.1	8.2	8.17	-	
D.O. Saturation (%)	61.8	64.3	60.5	65.6	72.2	62.5	64.48	-	
D.O. (mg/L)	4.7	4.9	4.5	4.9	5.3	4.7	4.84	4.98	
Turbidity (NTU)	5.6	5.8	6.4	6.2	6.1	6.9	6.17	-	
SS (mg/L)	10.0	8.0	10.0	8.0	9.0	8.0	8.83	-	
Remarks	Derrick lighters CM38 & CM83 (B21601V & B21784V) were in operation.								

Station	IMO3							Co-ordinates	
Time (hh:mm)	11:03-11:04							Northing	Easting
Water Depth (m)	17.4							22.22.061	113.55.274
Monitoring Depth (m)	1.0		8.7		16.4				
Trial	Trial 1	Trial 2	Trial 1	Trial 2	Trial 1	Trial 2	Depth-averaged	Bottom	
Water Temperature (°C)	25.4	25.6	25.3	25.4	25.3	25.4	25.39	-	
Salinity (ppt)	32.8	32.6	32.9	33.1	33.1	33.2	32.96	-	
pH	8.2	8.1	8.1	8.2	8.1	8.2	8.15	-	
D.O. Saturation (%)	61.7	64.5	62.1	62.2	62.7	63.2	62.73	-	
D.O. (mg/L)	4.2	4.4	4.2	4.2	4.3	4.3	4.27	4.29	
Turbidity (NTU)	8.4	8.1	9.1	9.0	9.9	9.7	9.03	-	
SS (mg/L)	11.0	13.0	11.0	13.0	11.0	14.0	12.17	-	
Remarks	Derrick lighters CM38 & CM83 (B21601V & B21784V) were in operation.								

Compliance with Action and Limit Level

Parameter	As in EM&A		C2*130%		IMO1		IMO2		IMO3		IMO4		MPB1		MPB2		MP	
	Action Level	Limit Level	Action Level	Limit Level	Exceedance of Action	Exceedance of Limit Level	Exceedance of Action	Exceedance of Limit Level	Exceedance of Action	Exceedance of Limit Level	Exceedance of Action	Exceedance of Limit Level	Exceedance of Action	Exceedance of Limit Level	Exceedance of Action	Exceedance of Limit Level	Exceedance of Action	Exceedance of Limit Level
DO (Bottom)	3.3	2.5	5.0	5.0	N	N	N	N	N	N	N	N	N	N	N	N	N	N
DO (Depth-averaged)	4.2	4.0	4.9	4.9	Y	Y	N	N	N	N	N	N	Y	Y	Y	Y	N	N
Turbidity (Depth-averaged)	29.0	49.0	9.0	9.0	N	N	N	N	N	N	N	N	N	N	N	N	N	N
SS (Depth-averaged)	24.0	37.0	11.9	11.9	N	N	N	N	N	N	N	N	N	N	N	N	N	N

Mid-Ebb

Station	IMO4							Co-ordinates	
Time (hh:mm)	10:49-10:51							Northing	Easting
Water Depth (m)	17.2							22.21.798	113.55.549
Monitoring Depth (m)	1.0		8.6		16.2				
Trial	Trial 1	Trial 2	Trial 1	Trial 2	Trial 1	Trial 2	Depth-averaged	Bottom	
Water Temperature (°C)	24.4	24.3	24.7	24.7	25.2	25.2	24.74	-	
Salinity (ppt)	31.7	31.3	32.6	32.6	33.2	33.3	32.44	-	
pH	8.1	8.2	8.1	8.2	8.1	8.1	8.13	-	
D.O. Saturation (%)	69.3	69.0	67.7	68.2	70.2	65.6	68.33	-	
D.O. (mg/L)	5.3	5.3	5.1	5.1	5.2	4.9	5.12	5.02	
Turbidity (NTU)	5.7	5.5	6.3	5.9	12.3	12.2	7.98	-	
SS (mg/L)	7.0	5.0	9.0	8.0	8.0	8.0	7.50	-	
Remarks	Derrick lighters CM38 & CM83 (B21601V & B21784V) were in operation.								

Station	MPB1								
Time (hh:mm)	11:46-11:47								
Water Depth (m)	7.2								
Monitoring Depth (m)	1.0		3.6		6.2				
Trial	Trial 1	Trial 2	Trial 1	Trial 2	Trial 1	Trial 2	Depth-averaged	Bottom	
Water Temperature (°C)	24.4	24.4	24.7	24.6	24.7	24.3	24.52	-	
Salinity (ppt)	31.0	31.0	30.9	30.3	32.6	32.8	31.46	-	
pH	8.1	8.1	8.1	8.1	8.1	8.1	8.11	-	
D.O. Saturation (%)	54.2	52.7	52.9	54.6	52.7	54.3	53.57	-	
D.O. (mg/L)	3.8	3.7	3.7	3.8	3.6	3.8	3.73	3.70	
Turbidity (NTU)	10.2	10.5	10.9	10.9	11.4	11.1	10.83	-	
SS (mg/L)	10.0	10.0	9.0	11.0	9.0	9.0	9.67	-	
Remarks	Derrick lighters CM38 & CM83 (B21601V & B21784V) were in operation.								

Station	MPB2								
Time (hh:mm)	11:51-11:52								
Water Depth (m)	7.4								
Monitoring Depth (m)	1.0		3.7		6.4				
Trial	Trial 1	Trial 2	Trial 1	Trial 2	Trial 1	Trial 2	Depth-averaged	Bottom	
Water Temperature (°C)	24.1	24.1	24.1	24.1	24.1	24.1	24.12	-	
Salinity (ppt)	31.2	31.2	31.2	31.2	31.2	31.2	31.19	-	
pH	8.1	8.1	8.1	8.1	8.1	8.1	8.10	-	
D.O. Saturation (%)	49.4	51.4	49.3	51.1	50.5	50.7	50.40	-	
D.O. (mg/L)	3.5	3.6	3.5	3.6	3.6	3.6	3.54	3.56	
Turbidity (NTU)	10.1	10.1	10.2	10.6	10.7	10.6	10.38	-	
SS (mg/L)	14.0	14.0	11.0	12.0	12.0	12.0	12.50	-	
Remarks	Derrick lighters CM38 & CM83 (B21601V & B21784V) were in operation.								

Station	MP								
Time (hh:mm)	11:39-11:40								
Water Depth (m)	4.9								
Monitoring Depth (m)	1.0		2.4		3.9				
Trial	Trial 1	Trial 2	Trial 1	Trial 2	Trial 1	Trial 2	Depth-averaged	Bottom	
Water Temperature (°C)	24.0	24.0	-	-	24.0	24.0	23.96	-	
Salinity (ppt)	30.9	30.9	-	-	30.9	30.9	30.89	-	
pH	8.1	8.0	-	-	8.0	8.0	8.03	-	
D.O. Saturation (%)	58.3	64.1	-	-	64.5	60.8	61.93	-	
D.O. (mg/L)	4.1	4.4	-	-	4.4	4.3	4.30	4.35	
Turbidity (NTU)	14.6	14.2	-	-	15.2	14.6	14.65	-	
SS (mg/L)	14.0	14.0	-	-	18.0	20.0	16.50	-	
Remarks	Derrick lighters CM38 & CM83 (B21601V & B21784V) were in operation.								

Sampling Date	11/14/09
Weather & Ambient Temperature	Cloudy, 26C

Station		C1 (NM3)							
Time (hh:mm)	17:29-17:30								
Water Depth (m)	16.1								
Monitoring Depth (m)	1.0		8.1		15.1				
Trial	Trial 1	Trial 2	Trial 1	Trial 2	Trial 1	Trial 2	Depth-averaged	Bottom	
Water Temperature (°C)	25.2	25.2	25.3	25.3	25.3	25.4	25.28	-	
Salinity (ppt)	33.1	32.7	33.7	33.8	33.9	33.9	33.50	-	
pH	8.1	8.2	8.2	8.1	8.1	8.2	8.14	-	
D.O. Saturation (%)	57.2	58.4	58.0	55.7	56.3	59.2	57.47	-	
D.O. (mg/L)	4.1	4.2	4.1	3.9	4.0	4.2	4.06	4.07	
Turbidity (NTU)	7.0	7.5	13.1	13.4	13.5	13.1	11.27	-	
SS (mg/L)	8.0	7.0	7.0	6.0	7.0	6.0	6.83	-	
Remarks	Derrick lighters CM38 & CM83 (B21601V & B21784V) were in operation.								

Station		C3 (NM6)							
Time (hh:mm)	15:53-15:54								
Water Depth (m)	6.4								
Monitoring Depth (m)	1.0		3.2		5.4				
Trial	Trial 1	Trial 2	Trial 1	Trial 2	Trial 1	Trial 2	Depth-averaged	Bottom	
Water Temperature (°C)	25.2	25.2	25.2	25.2	25.2	25.2	25.22	-	
Salinity (ppt)	31.1	30.9	31.2	31.1	31.1	31.2	31.09	-	
pH	8.1	8.1	8.1	8.1	8.1	8.1	8.08	-	
D.O. Saturation (%)	65.9	66.3	66.4	66.5	65.1	66.8	66.17	-	
D.O. (mg/L)	5.1	5.1	5.1	5.1	5.0	5.1	5.08	5.06	
Turbidity (NTU)	11.5	12.4	12.3	12.8	13.4	13.3	12.62	-	
SS (mg/L)	7.0	6.0	6.0	7.0	7.0	8.0	6.83	-	
Remarks	Derrick lighters CM38 & CM83 (B21601V & B21784V) were in operation.								

Station		IMO1						Co-ordinates	
Time (hh:mm)	17:14-17:15						Northing Easting		
Water Depth (m)	20.8						22.21.981 113.55.382		
Monitoring Depth (m)	1.0		10.4		19.8				
Trial	Trial 1	Trial 2	Trial 1	Trial 2	Trial 1	Trial 2	Depth-averaged	Bottom	
Water Temperature (°C)	25.4	25.4	25.4	25.4	25.4	25.4	25.38	-	
Salinity (ppt)	33.7	33.7	33.9	33.9	34.0	33.9	33.82	-	
pH	8.2	8.2	8.2	8.2	8.2	8.1	8.16	-	
D.O. Saturation (%)	55.0	54.7	54.0	54.7	55.6	53.9	54.65	-	
D.O. (mg/L)	3.9	3.9	3.8	3.9	3.9	3.8	3.86	3.86	
Turbidity (NTU)	6.4	7.1	15.7	16.1	16.2	15.9	12.90	-	
SS (mg/L)	6.0	6.0	8.0	7.0	7.0	9.0	7.17	-	
Remarks	Derrick lighters CM38 & CM83 (B21601V & B21784V) were in operation.								

Station		IMO2						Co-ordinates	
Time (hh:mm)	16:49-16:51						Northing Easting		
Water Depth (m)	21.1						22.21.721 113.55.377		
Monitoring Depth (m)	1.0		10.6		20.1				
Trial	Trial 1	Trial 2	Trial 1	Trial 2	Trial 1	Trial 2	Depth-averaged	Bottom	
Water Temperature (°C)	25.3	25.3	25.4	25.4	25.4	25.4	25.36	-	
Salinity (ppt)	33.6	33.5	33.7	33.6	34.0	34.1	33.73	-	
pH	8.2	8.2	8.2	8.1	8.2	8.1	8.15	-	
D.O. Saturation (%)	57.3	56.9	54.2	54.0	57.7	52.3	55.40	-	
D.O. (mg/L)	4.1	4.0	3.8	3.8	4.1	3.7	3.91	3.87	
Turbidity (NTU)	8.0	8.7	15.5	15.0	16.7	16.1	13.33	-	
SS (mg/L)	9.0	7.0	9.0	8.0	7.0	6.0	7.67	-	
Remarks	Derrick lighters CM38 & CM83 (B21601V & B21784V) were in operation.								

Station		IMO3						Co-ordinates	
Time (hh:mm)	17:08-17:09						Northing Easting		
Water Depth (m)	18.1						22.22.060 113.55.260		
Monitoring Depth (m)	1.0		9.1		17.1				
Trial	Trial 1	Trial 2	Trial 1	Trial 2	Trial 1	Trial 2	Depth-averaged	Bottom	
Water Temperature (°C)	25.3	25.3	25.4	25.4	25.4	25.4	25.35	-	
Salinity (ppt)	33.3	33.2	33.7	33.9	34.0	33.2	33.55	-	
pH	8.1	8.2	8.2	8.1	8.2	8.1	8.15	-	
D.O. Saturation (%)	54.0	55.6	54.4	50.8	56.3	51.7	53.80	-	
D.O. (mg/L)	3.8	3.9	3.8	3.6	4.0	3.7	3.81	3.82	
Turbidity (NTU)	10.6	10.6	15.0	15.1	16.4	16.0	13.95	-	
SS (mg/L)	7.0	8.0	8.0	7.0	7.0	9.0	7.67	-	
Remarks	Derrick lighters CM38 & CM83 (B21601V & B21784V) were in operation.								

Compliance with Action and Limit Level

Parameter	As in EM&A		Mean (C1-C3)*130%		IMO1		IMO2		IMO3		IMO4		MPB1		MPB2		MP	
	Action Level	Limit Level	Action Level	Limit Level	Exceedance of Action	Exceedance of Limit Level	Exceedance of Action Level	Exceedance of Limit Level	Exceedance of Action Level	Exceedance of Limit Level	Exceedance of Action Level	Exceedance of Limit Level	Exceedance of Action Level	Exceedance of Limit Level	Exceedance of Action Level	Exceedance of Limit Level	Exceedance of Action Level	Exceedance of Limit Level
DO (Bottom)	3.3	2.5	4.6	4.6	N	N	N	N	N	N	N	N	N	N	N	N	N	N
DO (Depth-averaged)	4.2	4.0	4.6	4.6	Y	Y	Y	Y	Y	Y	Y	Y	Y	Y	Y	Y	Y	Y
Turbidity (Depth-averaged)	29.0	49.0	15.5	15.5	N	N	N	N	N	N	N	N	N	N	N	N	N	N
SS (Depth-averaged)	24.0	37.0	8.9	8.9	N	N	N	N	N	N	N	N	N	N	N	N	N	N

Mid-Flood

Station		IMO4						Co-ordinates	
Time (hh:mm)	16:57-16:58						Northing Easting		
Water Depth (m)	17.9						22.21.799 113.55.541		
Monitoring Depth (m)	1.0		9.0		16.9				
Trial	Trial 1	Trial 2	Trial 1	Trial 2	Trial 1	Trial 2	Depth-averaged	Bottom	
Water Temperature (°C)	25.4	25.4	25.4	25.4	25.4	25.4	25.40	-	
Salinity (ppt)	33.6	33.7	33.7	33.7	33.7	33.7	33.69	-	
pH	8.2	8.2	8.1	8.2	8.2	8.1	8.16	-	
D.O. Saturation (%)	55.3	54.6	54.0	55.1	55.4	54.3	54.78	-	
D.O. (mg/L)	3.9	3.9	3.8	3.9	3.9	3.8	3.87	3.87	
Turbidity (NTU)	9.9	9.7	15.2	14.8	16.3	15.7	13.60	-	
SS (mg/L)	7.0	8.0	8.0	6.0	6.0	7.0	7.00	-	
Remarks	Derrick lighters CM38 & CM83 (B21601V & B21784V) were in operation.								

Station		MPB1							
Time (hh:mm)	16:16-16:17								
Water Depth (m)	6.9								
Monitoring Depth (m)	1.0		3.5		5.9				
Trial	Trial 1	Trial 2	Trial 1	Trial 2	Trial 1	Trial 2	Depth-averaged	Bottom	
Water Temperature (°C)	25.3	25.2	25.3	25.3	25.3	25.2	25.25	-	
Salinity (ppt)	31.1	31.0	31.2	31.1	31.6	31.4	31.23	-	
pH	8.1	8.1	8.1	8.1	8.1	8.0	8.06	-	
D.O. Saturation (%)	55.6	55.2	55.7	55.1	55.9	57.4	55.82	-	
D.O. (mg/L)	4.1	4.1	4.1	4.1	4.1	4.3	4.14	4.20	
Turbidity (NTU)	11.6	11.0	11.1	11.1	14.1	14.4	12.22	-	
SS (mg/L)	10.0	9.0	9.0	8.0	9.0	7.0	8.67	-	
Remarks	Derrick lighters CM38 & CM83 (B21601V & B21784V) were in operation.								

Station		MPB2							
Time (hh:mm)	16:09-16:10								
Water Depth (m)	7.0								
Monitoring Depth (m)	1.0		3.5		6.0				
Trial	Trial 1	Trial 2	Trial 1	Trial 2	Trial 1	Trial 2	Depth-averaged	Bottom	
Water Temperature (°C)	25.2	25.2	25.3	25.2	25.3	25.2	25.22	-	
Salinity (ppt)	30.5	30.6	30.8	30.8	31.6	31.8	30.98	-	
pH	8.1	8.1	8.1	8.0	8.0	8.1	8.06	-	
D.O. Saturation (%)	55.8	56.2	56.4	54.9	55.3	56.3	55.82	-	
D.O. (mg/L)	4.2	4.2	4.2	4.1	4.1	4.2	4.16	4.14	
Turbidity (NTU)	4.9	4.8	4.8	5.1	6.4	5.8	5.30	-	
SS (mg/L)	8.0	9.0	8.0	8.0	7.0	8.0	8.00	-	
Remarks	Derrick lighters CM38 & CM83 (B21601V & B21784V) were in operation.								

Station		MP							
Time (hh:mm)	16:24-16:25								
Water Depth (m)	5.0								
Monitoring Depth (m)	1.0		2.5		4.0				
Trial	Trial 1	Trial 2	Trial 1	Trial 2	Trial 1	Trial 2	Depth-averaged	Bottom	
Water Temperature (°C)	25.2	25.2	-	-	25.2	25.2	25.22	-	
Salinity (ppt)	30.8	30.8	-	-	30.9	30.8	30.82	-	
pH	8.1	8.1	-	-	8.1	8.1	8.07	-	
D.O. Saturation (%)	54.4	54.2	-	-	54.3	55.1	54.50	-	
D.O. (mg/L)	4.1	4.0	-	-	4.1	4.1	4.07	4.08	
Turbidity (NTU)	9.1	9.5	-	-	11.8	11.0	10.35	-	
SS (mg/L)	7.0	8.0	-	-	8.0	7.0	7.50	-	
Remarks	Derrick lighters CM38 & CM83 (B21601V & B21784V) were in operation.								

Sampling Date	11/15/09
Weather & Ambient Temperature	Cloudy, 25C

Station		C1 (NM3)							
Time (hh:mm)	17:29-17:31								
Water Depth (m)	17.2								
Monitoring Depth (m)	1.0		8.6		16.2				
Trial	Trial 1	Trial 2	Trial 1	Trial 2	Trial 1	Trial 2	Depth-averaged	Bottom	
Water Temperature (°C)	24.2	24.2	24.2	24.2	24.2	24.2	24.22	-	
Salinity (ppt)	33.3	33.4	33.3	33.4	33.4	33.3	33.33	-	
pH	8.2	8.2	8.1	8.2	8.2	8.2	8.16	-	
D.O. Saturation (%)	78.6	74.6	79.2	74.8	76.0	87.4	78.43	-	
D.O. (mg/L)	5.4	5.2	5.5	5.2	5.3	6.1	5.43	5.66	
Turbidity (NTU)	13.8	13.2	14.8	14.9	18.6	18.8	15.68	-	
SS (mg/L)	28.0	25.0	25.0	22.0	38.0	35.0	28.83	-	
Remarks	Derrick lighters CM38 & CM83 (B21601V & B21784V) were in operation.								

Station		C3 (NM6)							
Time (hh:mm)	16:17-16:18								
Water Depth (m)	7.4								
Monitoring Depth (m)	1.0		3.7		6.4				
Trial	Trial 1	Trial 2	Trial 1	Trial 2	Trial 1	Trial 2	Depth-averaged	Bottom	
Water Temperature (°C)	23.5	23.5	23.5	23.6	23.5	23.5	23.53	-	
Salinity (ppt)	32.4	32.5	32.4	32.6	32.4	32.7	32.52	-	
pH	8.1	8.1	8.1	8.1	8.0	8.1	8.08	-	
D.O. Saturation (%)	50.8	51.5	51.3	51.3	52.7	51.0	51.43	-	
D.O. (mg/L)	3.6	3.6	3.6	3.6	3.7	3.6	3.63	3.66	
Turbidity (NTU)	7.8	7.9	8.6	8.3	10.1	10.2	8.82	-	
SS (mg/L)	9.0	11.0	8.0	10.0	14.0	13.0	10.83	-	
Remarks	Derrick lighters CM38 & CM83 (B21601V & B21784V) were in operation.								

Station		IMO1						Co-ordinates	
Time (hh:mm)	16:43-16:45						Northing	Easting	
Water Depth (m)	21.6						22.21.939	113.55.141	
Monitoring Depth (m)	1.0		10.8		20.6				
Trial	Trial 1	Trial 2	Trial 1	Trial 2	Trial 1	Trial 2	Depth-averaged	Bottom	
Water Temperature (°C)	24.3	24.3	24.4	24.4	24.4	24.3	24.35	-	
Salinity (ppt)	33.3	33.3	33.5	33.5	33.5	33.4	33.41	-	
pH	8.2	8.2	8.2	8.2	8.2	8.1	8.16	-	
D.O. Saturation (%)	59.0	58.8	58.1	57.8	60.3	58.2	58.70	-	
D.O. (mg/L)	4.1	4.1	4.0	4.0	4.2	4.0	4.06	4.09	
Turbidity (NTU)	13.1	13.3	23.3	22.9	25.1	25.9	20.60	-	
SS (mg/L)	9.0	11.0	12.0	14.0	27.0	26.0	16.50	-	
Remarks	Derrick lighters CM38 & CM83 (B21601V & B21784V) were in operation.								

Station		IMO2						Co-ordinates	
Time (hh:mm)	17:09-17:10						Northing	Easting	
Water Depth (m)	20.4						22.21.662	113.55.409	
Monitoring Depth (m)	1.0		10.2		19.4				
Trial	Trial 1	Trial 2	Trial 1	Trial 2	Trial 1	Trial 2	Depth-averaged	Bottom	
Water Temperature (°C)	24.2	24.2	24.1	24.1	24.0	24.1	24.14	-	
Salinity (ppt)	33.3	33.3	33.3	33.4	33.4	33.5	33.36	-	
pH	8.2	8.2	8.2	8.2	8.2	8.2	8.17	-	
D.O. Saturation (%)	49.8	48.5	48.1	49.3	47.9	49.1	48.78	-	
D.O. (mg/L)	3.5	3.4	3.3	3.4	3.3	3.4	3.39	3.37	
Turbidity (NTU)	10.9	11.0	22.8	22.2	24.3	24.9	19.35	-	
SS (mg/L)	12.0	12.0	9.0	10.0	70.0	68.0	30.17	-	
Remarks	Derrick lighters CM38 & CM83 (B21601V & B21784V) were in operation.								

Station		IMO3						Co-ordinates	
Time (hh:mm)	16:50-16:52						Northing	Easting	
Water Depth (m)	18.9						22.22.071	113.55.257	
Monitoring Depth (m)	1.0		9.5		17.9				
Trial	Trial 1	Trial 2	Trial 1	Trial 2	Trial 1	Trial 2	Depth-averaged	Bottom	
Water Temperature (°C)	24.3	24.3	24.3	24.3	24.3	24.3	24.28	-	
Salinity (ppt)	33.5	33.5	33.5	33.5	33.4	33.5	33.48	-	
pH	8.2	8.2	8.2	8.2	8.2	8.2	8.18	-	
D.O. Saturation (%)	58.4	57.3	51.0	56.1	52.4	58.5	55.62	-	
D.O. (mg/L)	4.0	4.0	3.5	3.9	3.6	4.1	3.85	3.84	
Turbidity (NTU)	18.6	18.4	26.2	25.9	27.6	27.3	24.00	-	
SS (mg/L)	41.0	39.0	44.0	40.0	48.0	53.0	44.17	-	
Remarks	Derrick lighters CM38 & CM83 (B21601V & B21784V) were in operation.								

Compliance with Action and Limit Level

Parameter	As in EM&A		Mean (C1-C3)*130%		IMO1		IMO2		IMO3		IMO4		MPB1		MPB2		MP	
	Action Level	Limit Level	Action Level	Limit Level	Exceedance of Action	Exceedance of Limit Level	Exceedance of Action Level	Exceedance of Limit Level	Exceedance of Action Level	Exceedance of Limit Level	Exceedance of Action Level	Exceedance of Limit Level	Exceedance of Action Level	Exceedance of Limit Level	Exceedance of Action Level	Exceedance of Limit Level	Exceedance of Action Level	Exceedance of Limit Level
DO (Bottom)	3.3	2.5	4.7	4.7	N	N	N	N	N	N	N	N	N	N	N	N	N	N
DO (Depth-averaged)	4.2	4.0	4.5	4.5	Y	N	Y	Y	Y	Y	Y	Y	Y	Y	Y	Y	N	N
Turbidity (Depth-averaged)	29.0	49.0	15.9	15.9	N	N	N	N	N	N	N	N	N	N	N	N	N	N
SS (Depth-averaged)	24.0	37.0	25.8	25.8	N	N	Y	Y	N	Y	N	N	N	N	N	N	N	N

Mid-Flood

Station		IMO4						Co-ordinates	
Time (hh:mm)	17:00-17:01						Northing	Easting	
Water Depth (m)	14.3								
Monitoring Depth (m)	1.0		7.2		13.3				
Trial	Trial 1	Trial 2	Trial 1	Trial 2	Trial 1	Trial 2	Depth-averaged	Bottom	
Water Temperature (°C)	24.3	24.3	24.3	24.3	24.3	24.2	24.25	-	
Salinity (ppt)	33.4	33.4	33.3	33.4	33.4	33.3	33.38	-	
pH	8.2	8.1	8.1	8.2	8.1	8.1	8.13	-	
D.O. Saturation (%)	49.4	48.5	48.9	49.4	49.3	51.0	49.42	-	
D.O. (mg/L)	3.4	3.4	3.4	3.4	3.4	3.5	3.42	3.47	
Turbidity (NTU)	15.2	15.1	16.4	16.5	16.7	16.6	16.08	-	
SS (mg/L)	22.0	21.0	25.0	23.0	31.0	34.0	26.00	-	
Remarks	Derrick lighters CM38 & CM83 (B21601V & B21784V) were in operation.								

Station		MPB1							
Time (hh:mm)	15:52-15:53								
Water Depth (m)	8.2								
Monitoring Depth (m)	1.0		4.1		7.2				
Trial	Trial 1	Trial 2	Trial 1	Trial 2	Trial 1	Trial 2	Depth-averaged	Bottom	
Water Temperature (°C)	24.0	24.0	24.1	24.2	24.0	24.2	24.11	-	
Salinity (ppt)	32.5	32.4	32.8	32.8	32.8	32.9	32.71	-	
pH	8.1	8.1	8.1	8.1	8.1	8.1	8.08	-	
D.O. Saturation (%)	60.9	60.8	61.4	61.7	61.4	64.4	61.77	-	
D.O. (mg/L)	4.3	4.3	4.3	4.3	4.3	4.5	4.30	4.38	
Turbidity (NTU)	6.4	6.5	7.4	7.3	7.2	7.4	7.03	-	
SS (mg/L)	8.0	9.0	8.0	10.0	8.0	10.0	8.83	-	
Remarks	Derrick lighters CM38 & CM83 (B21601V & B21784V) were in operation.								

Station		MPB2							
Time (hh:mm)	16:01-16:02								
Water Depth (m)	8.8								
Monitoring Depth (m)	1.0		4.4		7.8				
Trial	Trial 1	Trial 2	Trial 1	Trial 2	Trial 1	Trial 2	Depth-averaged	Bottom	
Water Temperature (°C)	23.9	23.9	24.0	24.0	24.0	24.0	23.99	-	
Salinity (ppt)	32.5	32.6	32.6	32.7	32.6	32.7	32.61	-	
pH	8.1	8.1	8.1	8.1	8.1	8.1	8.10	-	
D.O. Saturation (%)	50.8	51.4	50.3	51.4	51.4	51.4	51.12	-	
D.O. (mg/L)	3.6	3.6	3.5	3.6	3.6	3.6	3.57	3.59	
Turbidity (NTU)	5.5	5.7	6.3	6.3	6.7	6.2	6.12	-	
SS (mg/L)	10.0	12.0	8.0	9.0	11.0	11.0	10.17	-	
Remarks	Derrick lighters CM38 & CM83 (B21601V & B21784V) were in operation.								

Station		MP							
Time (hh:mm)	15:44-15:45								
Water Depth (m)	5.5								
Monitoring Depth (m)	1.0		2.8		4.5				
Trial	Trial 1	Trial 2	Trial 1	Trial 2	Trial 1	Trial 2	Depth-averaged	Bottom	
Water Temperature (°C)	24.3	24.2	-	-	24.2	24.2	24.22	-	
Salinity (ppt)	32.2	32.2	-	-	32.4	32.3	32.25	-	
pH	8.0	8.0	-	-	8.0	8.0	8.03	-	
D.O. Saturation (%)	84.9	89.3	-	-	94.0	88.8	89.25	-	
D.O. (mg/L)	5.9	6.2	-	-	6.6	6.2	6.23	6.38	
Turbidity (NTU)	10.4	10.4	-	-	11.0	11.3	10.78	-	
SS (mg/L)	13.0	12.0	-	-	14.0	14.0	13.25	-	
Remarks	Derrick lighters CM38 & CM83 (B21601V & B21784V) were in operation.								

Sampling Date	11/16/09
Weather & Ambient Temperature	Rainy, 24C

Station	C1 (NM3)							
Time (hh:mm)	6:56-6:58							
Water Depth (m)	16.4							
Monitoring Depth (m)	1.0		8.2		15.4			
Trial	Trial 1	Trial 2	Trial 1	Trial 2	Trial 1	Trial 2	Depth-averaged	Bottom
Water Temperature (°C)	23.9	23.9	24.1	24.1	24.2	24.2	24.07	-
Salinity (ppt)	33.6	33.6	33.8	33.7	33.8	34.0	33.73	-
pH	8.2	8.3	8.3	8.2	8.2	8.2	8.23	-
D.O. Saturation (%)	62.4	63.4	62.7	61.3	61.8	63.2	62.47	-
D.O. (mg/L)	4.3	4.4	4.3	4.2	4.3	4.4	4.33	4.32
Turbidity (NTU)	7.2	6.8	9.9	9.7	10.7	11.2	9.25	-
SS (mg/L)	16.0	14.0	10.0	11.0	11.0	12.0	12.33	-
Remarks	Derrick lighters CM38 & CM83 (B21601V & B21784V) were in operation							

Station	C3 (NM6)							
Time (hh:mm)	8:10-8:12							
Water Depth (m)	6.4							
Monitoring Depth (m)	1.0		3.2		5.4			
Trial	Trial 1	Trial 2	Trial 1	Trial 2	Trial 1	Trial 2	Depth-averaged	Bottom
Water Temperature (°C)	23.1	23.1	23.1	23.1	23.1	23.1	23.08	-
Salinity (ppt)	33.5	33.5	33.6	33.6	33.9	33.9	33.65	-
pH	8.3	8.3	8.3	8.3	8.3	8.3	8.28	-
D.O. Saturation (%)	60.0	59.9	61.1	62.1	61.8	62.8	61.28	-
D.O. (mg/L)	4.2	4.2	4.3	4.4	4.3	4.4	4.32	4.38
Turbidity (NTU)	10.4	10.0	13.1	13.0	16.7	17.2	13.40	-
SS (mg/L)	12.0	10.0	11.0	12.0	14.0	16.0	12.50	-
Remarks	Derrick lighters CM38 & CM83 (B21601V & B21784V) were in operation							

Station	IMO1							
Time (hh:mm)	8:32-8:34							
Water Depth (m)	17.8							
Monitoring Depth (m)	1.0		8.9		16.8			
Trial	Trial 1	Trial 2	Trial 1	Trial 2	Trial 1	Trial 2	Depth-averaged	Bottom
Water Temperature (°C)	23.4	23.4	23.5	23.5	23.6	23.6	23.50	-
Salinity (ppt)	33.4	33.4	33.3	33.4	33.6	33.4	33.41	-
pH	8.2	8.2	8.2	8.2	8.2	8.2	8.20	-
D.O. Saturation (%)	82.2	81.7	82.4	81.7	82.1	85.2	82.55	-
D.O. (mg/L)	5.8	5.7	5.8	5.7	5.7	6.0	5.78	5.85
Turbidity (NTU)	8.8	8.8	9.9	9.6	9.3	9.0	9.23	-
SS (mg/L)	23.0	20.0	14.0	14.0	16.0	13.0	16.67	-
Remarks	Derrick lighters CM38 & CM83 (B21601V & B21784V) were in operation							

Station	IMO2							
Time (hh:mm)	8:41-8:43							
Water Depth (m)	15.2							
Monitoring Depth (m)	1.0		7.6		14.2			
Trial	Trial 1	Trial 2	Trial 1	Trial 2	Trial 1	Trial 2	Depth-averaged	Bottom
Water Temperature (°C)	23.2	23.2	23.4	23.4	23.4	23.4	23.31	-
Salinity (ppt)	33.2	33.2	33.3	33.4	33.4	33.5	33.35	-
pH	8.2	8.3	8.2	8.2	8.2	8.2	8.23	-
D.O. Saturation (%)	73.1	73.2	72.4	73.0	73.3	73.7	73.12	-
D.O. (mg/L)	5.2	5.2	5.1	5.1	5.1	5.2	5.14	5.16
Turbidity (NTU)	8.8	9.0	9.8	10.1	10.2	10.0	9.65	-
SS (mg/L)	14.0	11.0	14.0	12.0	10.0	13.0	12.33	-
Remarks	Derrick lighters CM38 & CM83 (B21601V & B21784V) were in operation							

Station	IMO3							
Time (hh:mm)	7:15-7:17							
Water Depth (m)	20.0							
Monitoring Depth (m)	1.0		10.0		19.0			
Trial	Trial 1	Trial 2	Trial 1	Trial 2	Trial 1	Trial 2	Depth-averaged	Bottom
Water Temperature (°C)	23.9	23.9	23.9	23.9	23.9	23.9	23.89	-
Salinity (ppt)	33.6	33.6	33.7	33.6	33.6	33.7	33.63	-
pH	8.2	8.2	8.2	8.2	8.1	8.1	8.17	-
D.O. Saturation (%)	79.8	80.3	80.1	80.4	82.2	80.7	80.58	-
D.O. (mg/L)	5.6	5.6	5.6	5.6	5.7	5.6	5.60	5.67
Turbidity (NTU)	8.7	8.3	14.3	14.3	19.8	19.3	14.12	-
SS (mg/L)	15.0	14.0	14.0	12.0	13.0	14.0	13.67	-
Remarks	Derrick lighters CM38 & CM83 (B21601V & B21784V) were in operation							

Compliance with Action and Limit Level

Parameter	As in EM&A		Mean (C1-C3)*130%		IMO1		IMO2		IMO3		IMO4		MPB1		MPB2		MP	
	Action Level	Limit Level	Action Level	Limit Level	Exceedance of Action	Exceedance of Limit Level	Exceedance of Action	Exceedance of Limit Level	Exceedance of Action	Exceedance of Limit Level	Exceedance of Action	Exceedance of Limit Level	Exceedance of Action	Exceedance of Limit Level	Exceedance of Action	Exceedance of Limit Level	Exceedance of Action	Exceedance of Limit Level
DO (Bottom)	3.3	2.5	4.3	4.3	N	N	N	N	N	N	N	N	N	N	N	N	N	N
DO (Depth-averaged)	4.2	4.0	4.3	4.3	N	N	N	N	N	N	N	N	N	N	N	N	N	N
Turbidity (Depth-averaged)	29.0	49.0	14.7	14.7	N	N	N	N	N	N	N	N	N	N	N	N	N	N
SS (Depth-averaged)	24.0	37.0	16.1	16.1	N	N	N	N	N	N	N	N	N	N	N	N	N	N

Mid-Flood

Station	IMO4							
Time (hh:mm)	7:05-7:07							
Water Depth (m)	18.6							
Monitoring Depth (m)	1.0		9.3		17.6			
Trial	Trial 1	Trial 2	Trial 1	Trial 2	Trial 1	Trial 2	Depth-averaged	Bottom
Water Temperature (°C)	23.9	23.9	23.9	23.9	23.9	24.0	23.92	-
Salinity (ppt)	33.6	33.5	33.5	33.6	33.6	33.6	33.58	-
pH	8.2	8.2	8.2	8.2	8.2	8.2	8.19	-
D.O. Saturation (%)	84.4	84.9	84.4	84.7	84.2	84.7	84.55	-
D.O. (mg/L)	5.9	5.9	5.9	5.9	5.9	5.9	5.88	5.87
Turbidity (NTU)	8.2	8.0	12.4	11.9	14.2	13.8	11.42	-
SS (mg/L)	13.0	12.0	12.0	10.0	11.0	12.0	11.67	-
Remarks	Derrick lighters CM38 & CM83 (B21601V & B21784V) were in operation							

Station	MPB1							
Time (hh:mm)	7:45-7:47							
Water Depth (m)	8.0							
Monitoring Depth (m)	1.0		4.0		7.0			
Trial	Trial 1	Trial 2	Trial 1	Trial 2	Trial 1	Trial 2	Depth-averaged	Bottom
Water Temperature (°C)	23.4	23.4	23.4	23.4	23.3	23.2	23.34	-
Salinity (ppt)	32.7	32.6	32.9	32.8	33.1	33.1	32.87	-
pH	8.2	8.2	8.2	8.2	8.1	8.1	8.16	-
D.O. Saturation (%)	66.0	65.5	64.9	65.9	65.5	66.5	65.72	-
D.O. (mg/L)	4.7	4.6	4.6	4.6	4.6	4.7	4.63	4.65
Turbidity (NTU)	10.8	10.3	16.7	16.5	24.0	23.4	16.95	-
SS (mg/L)	11.0	13.0	12.0	14.0	14.0	11.0	12.50	-
Remarks	Derrick lighters CM38 & CM83 (B21601V & B21784V) were in operation							

Station	MPB2							
Time (hh:mm)	7:55-7:56							
Water Depth (m)	8.4							
Monitoring Depth (m)	1.0		4.2		7.4			
Trial	Trial 1	Trial 2	Trial 1	Trial 2	Trial 1	Trial 2	Depth-averaged	Bottom
Water Temperature (°C)	23.1	23.1	23.1	23.1	23.1	23.1	23.08	-
Salinity (ppt)	33.4	33.5	33.8	33.7	33.9	33.8	33.68	-
pH	8.2	8.2	8.2	8.2	8.2	8.2	8.20	-
D.O. Saturation (%)	65.9	65.0	66.3	65.1	65.9	67.0	65.87	-
D.O. (mg/L)	4.7	4.6	4.7	4.6	4.6	4.7	4.64	4.68
Turbidity (NTU)	9.5	9.6	15.0	15.4	21.3	20.9	15.28	-
SS (mg/L)	19.0	18.0	10.0	11.0	13.0	13.0	14.00	-
Remarks	Derrick lighters CM38 & CM83 (B21601V & B21784V) were in operation							

Station	MP							
Time (hh:mm)	7:33-7:35							
Water Depth (m)	5.1							
Monitoring Depth (m)	1.0		2.6		4.1			
Trial	Trial 1	Trial 2	Trial 1	Trial 2	Trial 1	Trial 2	Depth-averaged	Bottom
Water Temperature (°C)	23.3	23.3	-	-	23.3	23.3	23.33	-
Salinity (ppt)	32.5	32.5	-	-	32.5	32.4	32.47	-
pH	8.1	8.1	-	-	8.1	8.1	8.08	-
D.O. Saturation (%)	66.5	66.8	-	-	67.0	68.4	67.18	-
D.O. (mg/L)	4.7	4.7	-	-	4.7	4.8	4.74	4.78
Turbidity (NTU)	17.0	16.3	-	-	20.5	19.7	18.38	-
SS (mg/L)	24.0	22.0	-	-	22.0	23.0	22.75	-
Remarks	Derrick lighters CM38 & CM83 (B21601V & B21784V) were in operation							

Sampling Date	11/17/09
Weather & Ambient Temperature	Cloudy, 24C

Mid-Ebb

Station	C2 (NM5)						Co-ordinates	
Time (hh:mm)	12:34-12:36						Northing	Easting
Water Depth (m)	19.4							
Monitoring Depth (m)	1.0		9.7		18.4			
Trial	Trial 1	Trial 2	Trial 1	Trial 2	Trial 1	Trial 2	Depth-averaged	Bottom
Water Temperature (°C)	22.1	22.1	22.1	22.1	22.1	22.1	22.09	-
Salinity (ppt)	33.6	33.6	33.6	33.6	33.7	33.7	33.63	-
pH	8.3	8.3	8.3	8.3	8.3	8.3	8.31	-
D.O. Saturation (%)	66.7	66.8	67.3	67.3	68.1	67.5	67.28	-
D.O. (mg/L)	4.8	4.8	4.8	4.8	4.9	4.9	4.83	4.87
Turbidity (NTU)	13.1	12.8	14.9	14.6	16.8	16.6	14.80	-
SS (mg/L)	30.0	20.0	17.0	16.0	16.0	18.0	19.50	-
Remarks	Derrick lighter CM38 (B21601V) was in operation							

Station	IMO4						Co-ordinates	
Time (hh:mm)							Northing	Easting
Water Depth (m)								
Monitoring Depth (m)								
Trial	Trial 1	Trial 2	Trial 1	Trial 2	Trial 1	Trial 2	Depth-averaged	Bottom
Water Temperature (°C)	-	-	-	-	-	-	-	-
Salinity (ppt)	-	-	-	-	-	-	-	-
pH	-	-	-	-	-	-	-	-
D.O. Saturation (%)	-	-	-	-	-	-	-	-
D.O. (mg/L)	-	-	-	-	-	-	-	-
Turbidity (NTU)	-	-	-	-	-	-	-	-
SS (mg/L)	-	-	-	-	-	-	-	-
Remarks								

Station	IMO1						Co-ordinates	
Time (hh:mm)	13:13-13:15						Northing	Easting
Water Depth (m)	18.0						22.21.713	113.54.592
Monitoring Depth (m)	1.0		9.0		17.0			
Trial	Trial 1	Trial 2	Trial 1	Trial 2	Trial 1	Trial 2	Depth-averaged	Bottom
Water Temperature (°C)	23.0	23.0	23.0	23.0	23.0	23.0	23.00	-
Salinity (ppt)	34.0	34.0	33.9	34.0	33.9	33.9	33.93	-
pH	8.3	8.3	8.3	8.3	8.3	8.3	8.29	-
D.O. Saturation (%)	60.3	60.4	59.8	60.2	60.4	60.9	60.33	-
D.O. (mg/L)	4.3	4.3	4.2	4.3	4.3	4.3	4.26	4.28
Turbidity (NTU)	21.8	21.4	23.5	23.8	28.4	28.6	24.58	-
SS (mg/L)	26.0	22.0	23.0	23.0	24.0	23.0	23.50	-
Remarks	Derrick lighter CM38 (B21601V) was in operation							

Station	MPB1						Co-ordinates	
Time (hh:mm)	12:58-13:00							
Water Depth (m)	7.4							
Monitoring Depth (m)	1.0		3.7		6.4			
Trial	Trial 1	Trial 2	Trial 1	Trial 2	Trial 1	Trial 2	Depth-averaged	Bottom
Water Temperature (°C)	23.3	23.4	23.1	23.1	22.8	22.8	23.08	-
Salinity (ppt)	34.1	34.1	34.0	34.0	33.9	33.9	33.99	-
pH	8.2	8.3	8.2	8.2	8.2	8.2	8.22	-
D.O. Saturation (%)	53.4	52.9	53.0	53.4	53.6	53.8	53.35	-
D.O. (mg/L)	3.7	3.7	3.7	3.8	3.8	3.8	3.76	3.80
Turbidity (NTU)	11.0	10.6	11.8	12.5	14.7	15.0	12.60	-
SS (mg/L)	26.0	31.0	27.0	28.0	38.0	34.0	30.67	-
Remarks	Derrick lighter CM38 (B21601V) was in operation							

Station	IMO2						Co-ordinates	
Time (hh:mm)	13:24-13:26						Northing	Easting
Water Depth (m)	16.6						22.21.450	113.54.911
Monitoring Depth (m)	1.0		8.3		15.6			
Trial	Trial 1	Trial 2	Trial 1	Trial 2	Trial 1	Trial 2	Depth-averaged	Bottom
Water Temperature (°C)	23.6	23.7	23.7	23.7	23.7	23.7	23.67	-
Salinity (ppt)	34.3	34.3	34.2	34.2	34.2	34.2	34.23	-
pH	8.3	8.3	8.3	8.3	8.3	8.3	8.33	-
D.O. Saturation (%)	60.8	60.7	61.3	60.9	61.1	61.4	61.03	-
D.O. (mg/L)	4.2	4.2	4.3	4.2	4.3	4.3	4.24	4.26
Turbidity (NTU)	12.2	12.4	16.2	16.1	22.9	23.4	17.20	-
SS (mg/L)	24.0	25.0	22.0	22.0	23.0	22.0	23.00	-
Remarks	Derrick lighter CM38 (B21601V) was in operation							

Station	MPB2						Co-ordinates	
Time (hh:mm)	12:23-12:25							
Water Depth (m)	8.0							
Monitoring Depth (m)	1.0		4.0		7.0			
Trial	Trial 1	Trial 2	Trial 1	Trial 2	Trial 1	Trial 2	Depth-averaged	Bottom
Water Temperature (°C)	21.9	21.9	21.9	21.9	22.0	22.0	21.94	-
Salinity (ppt)	33.5	33.5	33.5	33.5	33.4	33.4	33.47	-
pH	8.3	8.3	8.3	8.3	8.3	8.3	8.29	-
D.O. Saturation (%)	69.8	68.7	69.4	70.2	71.3	72.0	70.23	-
D.O. (mg/L)	5.0	5.0	5.0	5.1	5.1	5.2	5.06	5.16
Turbidity (NTU)	12.2	12.6	14.9	15.3	20.2	19.9	15.85	-
SS (mg/L)	33.0	38.0	40.0	39.0	40.0	42.0	38.67	-
Remarks	Derrick lighter CM38 (B21601V) was in operation							

Station	IMO3						Co-ordinates	
Time (hh:mm)							Northing	Easting
Water Depth (m)								
Monitoring Depth (m)								
Trial	Trial 1	Trial 2	Trial 1	Trial 2	Trial 1	Trial 2	Depth-averaged	Bottom
Water Temperature (°C)	-	-	-	-	-	-	-	-
Salinity (ppt)	-	-	-	-	-	-	-	-
pH	-	-	-	-	-	-	-	-
D.O. Saturation (%)	-	-	-	-	-	-	-	-
D.O. (mg/L)	-	-	-	-	-	-	-	-
Turbidity (NTU)	-	-	-	-	-	-	-	-
SS (mg/L)	-	-	-	-	-	-	-	-
Remarks								

Station	MP						Co-ordinates	
Time (hh:mm)	12:44-12:45							
Water Depth (m)	4.6							
Monitoring Depth (m)	1.0		2.3		3.6			
Trial	Trial 1	Trial 2	Trial 1	Trial 2	Trial 1	Trial 2	Depth-averaged	Bottom
Water Temperature (°C)	22.1	22.1	-	-	22.1	22.1	22.12	-
Salinity (ppt)	33.6	33.6	-	-	33.6	33.5	33.59	-
pH	8.3	8.3	-	-	8.3	8.3	8.28	-
D.O. Saturation (%)	59.5	59.3	-	-	58.8	58.8	59.10	-
D.O. (mg/L)	4.3	4.3	-	-	4.2	4.2	4.25	4.23
Turbidity (NTU)	23.9	23.8	-	-	24.6	25.1	24.35	-
SS (mg/L)	34.0	34.0	-	-	32.0	35.0	33.75	-
Remarks	Derrick lighter CM38 (B21601V) was in operation							

Compliance with Action and Limit Level

Parameter	As in EM&A		C2*130%		IMO1		IMO2		IMO3		IMO4		MPB1		MPB2		MP	
	Action Level	Limit Level	Action Level	Limit Level	Exceedance of Action Level	Exceedance of Limit Level	Exceedance of Action Level	Exceedance of Limit Level	Exceedance of Action Level	Exceedance of Limit Level	Exceedance of Action Level	Exceedance of Limit Level	Exceedance of Action Level	Exceedance of Limit Level	Exceedance of Action Level	Exceedance of Limit Level	Exceedance of Action Level	Exceedance of Limit Level
DO (Bottom)	3.3	2.5	4.9	4.9	N	N	N	N	-	-	-	-	N	N	N	N	N	N
DO (Depth-averaged)	4.2	4.0	4.8	4.8	N	N	N	N	-	-	-	-	Y	Y	N	N	N	N
Turbidity (Depth-averaged)	29.0	49.0	19.2	19.2	N	N	N	N	-	-	-	-	N	N	N	N	N	N
SS (Depth-averaged)	24.0	37.0	25.4	25.4	N	N	N	N	-	-	-	-	Y	N	Y	Y	Y	N

Sampling Date	11/17/09
Weather & Ambient Temperature	Cloudy, 24C

Station	C1 (NM3)							
Time (hh:mm)	7:50-7:53							
Water Depth (m)	16.2							
Monitoring Depth (m)	1.0		8.1		15.2			
Trial	Trial 1	Trial 2	Trial 1	Trial 2	Trial 1	Trial 2	Depth-averaged	Bottom
Water Temperature (°C)	23.7	23.7	23.7	23.8	23.7	23.8	23.74	-
Salinity (ppt)	34.2	34.2	34.2	34.2	34.2	34.2	34.20	-
pH	8.3	8.3	8.2	8.3	8.2	8.3	8.27	-
D.O. Saturation (%)	75.7	75.4	75.9	75.2	76.4	76.3	75.82	-
D.O. (mg/L)	5.3	5.2	5.3	5.2	5.3	5.3	5.27	5.31
Turbidity (NTU)	6.1	6.2	7.2	7.2	8.3	8.6	7.27	-
SS (mg/L)	14.0	16.0	17.0	18.0	13.0	16.0	15.67	-
Remarks	Derrick lighter CM38 (B21601V) was in operation							

Station	C3 (NM6)							
Time (hh:mm)	9:19-9:21							
Water Depth (m)	6.2							
Monitoring Depth (m)	1.0		3.1		5.2			
Trial	Trial 1	Trial 2	Trial 1	Trial 2	Trial 1	Trial 2	Depth-averaged	Bottom
Water Temperature (°C)	21.7	21.7	21.7	21.7	21.7	21.7	21.69	-
Salinity (ppt)	33.9	33.9	33.9	33.9	33.8	33.8	33.85	-
pH	8.3	8.3	8.3	8.3	8.3	8.2	8.27	-
D.O. Saturation (%)	79.2	78.4	78.0	77.8	76.0	76.7	77.68	-
D.O. (mg/L)	5.7	5.7	5.6	5.6	5.5	5.5	5.60	5.50
Turbidity (NTU)	17.0	16.8	20.2	19.8	22.8	22.8	19.90	-
SS (mg/L)	32.0	28.0	27.0	26.0	26.0	23.0	27.00	-
Remarks	Derrick lighter CM38 (B21601V) was in operation							

Station	IMO1								Co-ordinates	
Time (hh:mm)	8:27-8:29								Northing	Easting
Water Depth (m)	18.4								22.21.705	113.54.590
Monitoring Depth (m)	1.0		9.2		17.4					
Trial	Trial 1	Trial 2	Trial 1	Trial 2	Trial 1	Trial 2	Depth-averaged	Bottom		
Water Temperature (°C)	23.0	23.0	22.9	22.9	23.0	23.0	22.98	-		
Salinity (ppt)	33.9	33.9	33.9	33.8	33.8	33.8	33.85	-		
pH	8.3	8.3	8.3	8.2	8.2	8.2	8.25	-		
D.O. Saturation (%)	57.9	58.0	58.2	58.1	58.7	58.5	58.23	-		
D.O. (mg/L)	4.1	4.1	4.1	4.1	4.1	4.1	4.11	4.14		
Turbidity (NTU)	17.1	16.7	19.8	20.5	24.1	23.7	20.32	-		
SS (mg/L)	25.0	29.0	27.0	32.0	33.0	27.0	28.83	-		
Remarks	Derrick lighter CM38 (B21601V) was in operation									

Station	IMO2								Co-ordinates	
Time (hh:mm)	8:15-8:18								Northing	Easting
Water Depth (m)	16.6								22.21.441	113.54.903
Monitoring Depth (m)	1.0		8.3		15.6					
Trial	Trial 1	Trial 2	Trial 1	Trial 2	Trial 1	Trial 2	Depth-averaged	Bottom		
Water Temperature (°C)	23.6	23.6	23.7	23.7	23.7	23.7	23.67	-		
Salinity (ppt)	34.1	34.2	34.2	34.2	34.2	34.2	34.17	-		
pH	8.3	8.3	8.3	8.3	8.3	8.2	8.27	-		
D.O. Saturation (%)	57.8	57.5	58.0	57.7	58.6	58.1	57.95	-		
D.O. (mg/L)	4.0	4.0	4.0	4.0	4.1	4.0	4.03	4.06		
Turbidity (NTU)	13.3	13.9	18.4	18.8	25.8	25.4	19.27	-		
SS (mg/L)	23.0	27.0	24.0	25.0	19.0	20.0	23.00	-		
Remarks	Derrick lighter CM38 (B21601V) was in operation									

Station	IMO3								Co-ordinates	
Time (hh:mm)									Northing	Easting
Water Depth (m)										
Monitoring Depth (m)										
Trial	Trial 1	Trial 2	Trial 1	Trial 2	Trial 1	Trial 2	Depth-averaged	Bottom		
Water Temperature (°C)	-	-	-	-	-	-	-	-		
Salinity (ppt)	-	-	-	-	-	-	-	-		
pH	-	-	-	-	-	-	-	-		
D.O. Saturation (%)	-	-	-	-	-	-	-	-		
D.O. (mg/L)	-	-	-	-	-	-	-	-		
Turbidity (NTU)	-	-	-	-	-	-	-	-		
SS (mg/L)	-	-	-	-	-	-	-	-		
Remarks										

Compliance with Action and Limit Level

Parameter	As in EM&A		Mean (C1+C3)*130%		IMO1		IMO2		IMO3		IMO4		MPB1		MPB2		MP	
	Action Level	Limit Level	Action Level	Limit Level	Exceedance of Action	Exceedance of Limit Level	Exceedance of Action Level	Exceedance of Limit Level	Exceedance of Action Level	Exceedance of Limit Level	Exceedance of Action	Exceedance of Limit Level	Exceedance of Action	Exceedance of Limit Level	Exceedance of Action	Exceedance of Limit Level	Exceedance of Action Level	Exceedance of Limit Level
DO (Bottom)	3.3	2.5	5.4	5.4	N	N	N	N	-	-	N	N	N	N	N	N	N	N
DO (Depth-averaged)	4.2	4.0	5.4	5.4	Y	N	Y	N	-	-	N	N	N	N	N	N	Y	Y
Turbidity (Depth-averaged)	29.0	49.0	17.7	17.7	N	N	N	N	-	-	N	N	N	N	N	N	N	N
SS (Depth-averaged)	24.0	37.0	27.7	27.7	Y	N	N	N	-	-	Y	N	Y	N	Y	N	Y	N

Mid-Flood

Station	IMO4								Co-ordinates	
Time (hh:mm)									Northing	Easting
Water Depth (m)										
Monitoring Depth (m)										
Trial	Trial 1	Trial 2	Trial 1	Trial 2	Trial 1	Trial 2	Depth-averaged	Bottom		
Water Temperature (°C)	-	-	-	-	-	-	-	-		
Salinity (ppt)	-	-	-	-	-	-	-	-		
pH	-	-	-	-	-	-	-	-		
D.O. Saturation (%)	-	-	-	-	-	-	-	-		
D.O. (mg/L)	-	-	-	-	-	-	-	-		
Turbidity (NTU)	-	-	-	-	-	-	-	-		
SS (mg/L)	-	-	-	-	-	-	-	-		
Remarks										

Station	MPB1							
Time (hh:mm)	8:52-8:54							
Water Depth (m)	7.8							
Monitoring Depth (m)	1.0		3.9		6.8			
Trial	Trial 1	Trial 2	Trial 1	Trial 2	Trial 1	Trial 2	Depth-averaged	Bottom
Water Temperature (°C)	22.0	22.0	22.0	22.1	22.1	22.1	22.05	-
Salinity (ppt)	33.6	33.6	33.6	33.6	33.5	33.5	33.53	-
pH	8.3	8.3	8.3	8.3	8.2	8.2	8.26	-
D.O. Saturation (%)	64.3	64.1	62.5	62.6	61.7	62.0	62.87	-
D.O. (mg/L)	4.6	4.6	4.5	4.5	4.4	4.5	4.51	4.44
Turbidity (NTU)	18.8	18.1	18.7	18.5	19.4	19.1	18.77	-
SS (mg/L)	28.0	28.0	28.0	33.0	30.0	31.0	29.67	-
Remarks	Derrick lighter CM38 (B21601V) was in operation							

Station	MPB2								Co-ordinates	
Time (hh:mm)	9:01-9:04								Northing	Easting
Water Depth (m)	8.2								22.21.705	113.54.590
Monitoring Depth (m)	1.0		4.1		7.2					
Trial	Trial 1	Trial 2	Trial 1	Trial 2	Trial 1	Trial 2	Depth-averaged	Bottom		
Water Temperature (°C)	21.9	21.9	21.9	21.9	21.9	22.0	21.91	-		
Salinity (ppt)	33.4	33.5	33.4	33.4	33.4	33.3	33.39	-		
pH	8.3	8.3	8.2	8.2	8.2	8.2	8.24	-		
D.O. Saturation (%)	67.1	67.2	66.4	66.2	67.5	67.2	66.93	-		
D.O. (mg/L)	4.8	4.8	4.8	4.8	4.9	4.8	4.82	4.86		
Turbidity (NTU)	11.3	11.1	15.8	15.5	18.7	19.1	15.25	-		
SS (mg/L)	30.0	30.0	28.0	35.0	41.0	39.0	33.83	-		
Remarks	Derrick lighter CM38 (B21601V) was in operation									

Station	MP								Co-ordinates	
Time (hh:mm)	8:42-8:44								Northing	Easting
Water Depth (m)	4.9								22.21.441	113.54.903
Monitoring Depth (m)	1.0		2.5		3.9					
Trial	Trial 1	Trial 2	Trial 1	Trial 2	Trial 1	Trial 2	Depth-averaged	Bottom		
Water Temperature (°C)	22.1	22.1	-	-	22.1	22.1	22.09	-		
Salinity (ppt)	33.4	33.5	-	-	33.4	33.4	33.44	-		
pH	8.3	8.2	-	-	8.3	8.2	8.24	-		
D.O. Saturation (%)	54.7	54.0	-	-	54.0	53.6	54.08	-		
D.O. (mg/L)	3.9	3.9	-	-	3.9	3.9	3.89	3.87		
Turbidity (NTU)	23.1	22.2	-	-	26.7	27.8	24.95	-		
SS (mg/L)	34.0	31.0	-	-	30.0	46.0	35.25	-		
Remarks	Derrick lighter CM38 (B21601V) was in operation									

Sampling Date	11/18/09
Weather & Ambient Temperature	Cloudy, 15C

Station		C2 (NMS)						Co-ordinates	
Time (hh:mm)		13:23-13:24						Northing	Easting
Water Depth (m)		20.1						22.21.700	113.54.479
Monitoring Depth (m)		1.0		10.1		19.1		Depth-averaged	Bottom
Trial	Trial 1	Trial 2	Trial 1	Trial 2	Trial 1	Trial 2	Depth-averaged	Bottom	
Water Temperature (°C)	23.1	23.1	23.1	23.1	23.1	23.1	23.11	-	
Salinity (ppt)	34.5	34.5	34.6	34.5	34.4	34.5	34.50	-	
pH	8.2	8.2	8.2	8.2	8.2	8.2	8.20	-	
D.O. Saturation (%)	104.7	101.3	101.9	107.2	112.2	103.3	105.10	-	
D.O. (mg/L)	7.4	7.1	7.2	7.5	7.9	7.3	7.38	7.57	
Turbidity (NTU)	16.5	15.5	18.8	20.8	20.0	19.4	18.50	-	
SS (mg/L)	10.0	9.0	11.0	10.0	11.0	10.0	10.17	-	
Remarks	Derrick lighter CM38 (B21601V) and dredger were in operation.								

Station		IMO1						Co-ordinates	
Time (hh:mm)		13:37-13:38						Northing	Easting
Water Depth (m)		18.6						22.21.700	113.54.479
Monitoring Depth (m)		1.0		9.3		17.6		Depth-averaged	Bottom
Trial	Trial 1	Trial 2	Trial 1	Trial 2	Trial 1	Trial 2	Depth-averaged	Bottom	
Water Temperature (°C)	23.0	23.0	22.7	22.7	22.6	22.8	22.82	-	
Salinity (ppt)	34.6	34.6	34.5	34.5	34.5	34.5	34.53	-	
pH	8.3	8.3	8.3	8.3	8.3	8.2	8.26	-	
D.O. Saturation (%)	78.3	78.5	78.0	78.5	78.1	77.9	78.22	-	
D.O. (mg/L)	5.5	5.5	5.5	5.6	5.5	5.5	5.52	5.52	
Turbidity (NTU)	18.8	18.8	19.1	19.9	19.2	19.6	19.23	-	
SS (mg/L)	14.0	11.0	15.0	16.0	17.0	17.0	15.00	-	
Remarks	Derrick lighter CM38 (B21601V) and dredger were in operation.								

Station		IMO2						Co-ordinates	
Time (hh:mm)		13:50-13:51						Northing	Easting
Water Depth (m)		13.2						22.21.306	113.54.869
Monitoring Depth (m)		1.0		6.6		12.2		Depth-averaged	Bottom
Trial	Trial 1	Trial 2	Trial 1	Trial 2	Trial 1	Trial 2	Depth-averaged	Bottom	
Water Temperature (°C)	22.9	23.0	22.5	22.5	22.5	22.3	22.60	-	
Salinity (ppt)	34.7	30.9	34.7	34.7	34.3	34.4	33.94	-	
pH	8.3	8.3	8.3	8.3	8.3	8.3	8.29	-	
D.O. Saturation (%)	78.8	76.3	79.0	78.2	78.0	84.1	79.07	-	
D.O. (mg/L)	5.5	5.5	5.6	5.6	5.5	6.0	5.62	5.76	
Turbidity (NTU)	19.0	19.4	21.9	21.3	22.7	22.3	21.10	-	
SS (mg/L)	14.0	12.0	13.0	14.0	16.0	19.0	14.67	-	
Remarks	Derrick lighter CM38 (B21601V) and dredger were in operation.								

Station		IMO3						Co-ordinates	
Time (hh:mm)								Northing	Easting
Water Depth (m)									
Monitoring Depth (m)								Depth-averaged	Bottom
Trial	Trial 1	Trial 2	Trial 1	Trial 2	Trial 1	Trial 2	Depth-averaged	Bottom	
Water Temperature (°C)	-	-	-	-	-	-	-	-	
Salinity (ppt)	-	-	-	-	-	-	-	-	
pH	-	-	-	-	-	-	-	-	
D.O. Saturation (%)	-	-	-	-	-	-	-	-	
D.O. (mg/L)	-	-	-	-	-	-	-	-	
Turbidity (NTU)	-	-	-	-	-	-	-	-	
SS (mg/L)	-	-	-	-	-	-	-	-	
Remarks									

Station		IMO4						Co-ordinates	
Time (hh:mm)								Northing	Easting
Water Depth (m)									
Monitoring Depth (m)								Depth-averaged	Bottom
Trial	Trial 1	Trial 2	Trial 1	Trial 2	Trial 1	Trial 2	Depth-averaged	Bottom	
Water Temperature (°C)	-	-	-	-	-	-	-	-	
Salinity (ppt)	-	-	-	-	-	-	-	-	
pH	-	-	-	-	-	-	-	-	
D.O. Saturation (%)	-	-	-	-	-	-	-	-	
D.O. (mg/L)	-	-	-	-	-	-	-	-	
Turbidity (NTU)	-	-	-	-	-	-	-	-	
SS (mg/L)	-	-	-	-	-	-	-	-	
Remarks									

Mid-Ebb

Station		IMO5						Co-ordinates	
Time (hh:mm)		14:03-14:04						Northing	Easting
Water Depth (m)		19.7						22.21.060	113.55.099
Monitoring Depth (m)		1.0		9.9		18.7		Depth-averaged	Bottom
Trial	Trial 1	Trial 2	Trial 1	Trial 2	Trial 1	Trial 2	Depth-averaged	Bottom	
Water Temperature (°C)	23.0	23.0	23.0	23.0	23.0	23.0	23.00	-	
Salinity (ppt)	34.5	34.5	34.4	33.1	34.5	34.6	34.26	-	
pH	8.3	8.3	8.3	8.3	8.3	8.3	8.29	-	
D.O. Saturation (%)	79.3	79.2	79.3	79.2	79.3	79.4	79.28	-	
D.O. (mg/L)	5.6	5.6	5.6	5.6	5.6	5.6	5.58	5.58	
Turbidity (NTU)	24.1	23.5	30.9	30.4	32.9	32.7	29.08	-	
SS (mg/L)	21.0	22.0	17.0	14.0	15.0	16.0	17.50	-	
Remarks	Derrick lighter CM38 (B21601V) and dredger were in operation.								

Station		IMO6						Co-ordinates	
Time (hh:mm)		14:16-14:17						Northing	Easting
Water Depth (m)		18.8						22.21.680	113.55.722
Monitoring Depth (m)		1.0		9.4		17.8		Depth-averaged	Bottom
Trial	Trial 1	Trial 2	Trial 1	Trial 2	Trial 1	Trial 2	Depth-averaged	Bottom	
Water Temperature (°C)	23.0	23.0	23.0	23.0	23.0	23.0	23.01	-	
Salinity (ppt)	34.5	34.5	34.0	34.4	34.5	34.5	34.40	-	
pH	8.3	8.3	8.3	8.3	8.3	8.3	8.29	-	
D.O. Saturation (%)	83.6	83.2	83.3	83.6	83.7	83.3	83.45	-	
D.O. (mg/L)	5.9	5.9	5.9	5.9	5.9	5.9	5.87	5.87	
Turbidity (NTU)	21.6	20.6	23.9	24.6	25.1	24.6	23.40	-	
SS (mg/L)	17.0	16.0	14.0	15.0	12.0	14.0	14.67	-	
Remarks	Derrick lighter CM38 (B21601V) and dredger were in operation.								

Station		MPB1						Co-ordinates	
Time (hh:mm)		12:56-12:57						Northing	Easting
Water Depth (m)		8.3							
Monitoring Depth (m)		1.0		4.2		7.3		Depth-averaged	Bottom
Trial	Trial 1	Trial 2	Trial 1	Trial 2	Trial 1	Trial 2	Depth-averaged	Bottom	
Water Temperature (°C)	21.4	21.3	21.3	21.3	21.3	21.3	21.30	-	
Salinity (ppt)	34.2	34.2	34.1	30.6	34.2	34.2	33.58	-	
pH	8.3	8.3	8.3	8.3	8.3	8.3	8.31	-	
D.O. Saturation (%)	80.6	80.9	81.2	81.0	81.1	80.9	80.95	-	
D.O. (mg/L)	5.8	5.9	5.9	6.0	5.9	5.9	5.89	5.88	
Turbidity (NTU)	20.4	20.9	28.7	28.3	28.2	27.4	25.65	-	
SS (mg/L)	21.0	24.0	28.0	23.0	27.0	29.0	25.33	-	
Remarks	Derrick lighter CM38 (B21601V) and dredger were in operation.								

Station		MPB2						Co-ordinates	
Time (hh:mm)		12:45-12:46						Northing	Easting
Water Depth (m)		8.5							
Monitoring Depth (m)		1.0		4.3		7.5		Depth-averaged	Bottom
Trial	Trial 1	Trial 2	Trial 1	Trial 2	Trial 1	Trial 2	Depth-averaged	Bottom	
Water Temperature (°C)	21.3	21.3	21.3	21.3	21.3	21.3	21.30	-	
Salinity (ppt)	33.1	34.2	34.2	32.3	34.2	34.2	33.69	-	
pH	8.3	8.3	8.3	8.3	8.3	8.3	8.31	-	
D.O. Saturation (%)	81.3	81.6	82.0	81.3	82.1	81.5	81.63	-	
D.O. (mg/L)	5.9	5.9	6.0	6.0	6.0	5.9	5.94	5.94	
Turbidity (NTU)	34.7	34.7	34.4	34.7	37.9	37.1	35.58	-	
SS (mg/L)	55.0	50.0	41.0	46.0	55.0	48.0	49.17	-	
Remarks	Derrick lighter CM38 (B21601V) and dredger were in operation.								

Station		MP						Co-ordinates	
Time (hh:mm)		13:05-13:06						Northing	Easting
Water Depth (m)		5.1							
Monitoring Depth (m)		1.0		2.5		4.1		Depth-averaged	Bottom
Trial	Trial 1	Trial 2	Trial 1	Trial 2	Trial 1	Trial 2	Depth-averaged	Bottom	
Water Temperature (°C)	21.7	21.6	-	-	21.7	21.6	21.64	-	
Salinity (ppt)	33.8	33.8	-	-	33.8	33.8	33.80	-	
pH	8.2	8.2	-	-	8.2	8.1	8.15	-	
D.O. Saturation (%)	80.5	80.8	-	-	80.7	81.5	80.88	-	
D.O. (mg/L)	5.8	5.9	-	-	5.8	5.9	5.85	5.87	
Turbidity (NTU)	17.0	17.4	-	-	17.1	17.8	17.33	-	
SS (mg/L)	21.0	18.0	-	-	14.0	16.0	17.25	-	
Remarks	Derrick lighter CM38 (B21601V) and dredger were in operation.								

Compliance with Action and Limit Level

Parameter	As in EM&A		C2*130%		IMO1		IMO2		IMO3		IMO4		IMO5		IMO6		MPB1		MPB2		MP	
	Action Level	Limit Level	Action Level	Limit Level	Exceedance of Action Level	Exceedance of Limit Level	Exceedance of Action Level	Exceedance of Limit Level	Exceedance of Action Level	Exceedance of Limit Level	Exceedance of Action Level	Exceedance of Limit Level	Exceedance of Action Level	Exceedance of Limit Level	Exceedance of Action Level	Exceedance of Limit Level	Exceedance of Action Level	Exceedance of Limit Level	Exceedance of Action Level	Exceedance of Limit Level	Exceedance of Action Level	Exceedance of Limit Level
DO (Bottom)	3.3	2.5	7.6	7.6	N	N	N	N	-	-	-	-	N	N	N	N	N	N	N	N	N	N
DO (Depth-averaged)	4.2	4.0	7.4	7.4	N	N	N	N	-	-	-	-	N	N	N	N	N	N	N	N	N	N
Turbidity (Depth-averaged)	29.0	49.0	24.1	24.1	N	N	N	N	-	-	-	-	Y	N	N	N	N	N	Y	N	N	N
SS (Depth-averaged)	24.0	37.0	13.2	13.2	N	N	N	N	-	-	-	-	N	N	N	N	N	Y	N	Y	Y	N

Sampling Date	11/18/09
Weather & Ambient Temperature	Cloudy, 12C

Mid-Flood

Station	C1 (NM3)						Co-ordinates	
Time (hh:mm)	8:25-8:26						Northing	Easting
Water Depth (m)	16.2						22.21.041	113.55.156
Monitoring Depth (m)	1.0		8.1		15.2			
Trial	Trial 1	Trial 2	Trial 1	Trial 2	Trial 1	Trial 2	Depth-averaged	Bottom
Water Temperature (°C)	23.0	23.0	23.0	23.0	23.1	23.0	23.93	-
Salinity (ppt)	34.5	34.4	34.5	34.4	34.5	34.4	34.46	-
pH	8.3	8.2	8.3	8.2	8.2	8.2	8.22	-
D.O. Saturation (%)	100.5	100.3	101.5	100.3	100.3	100.4	100.55	-
D.O. (mg/L)	7.1	7.1	7.1	7.1	7.1	7.1	7.07	7.05
Turbidity (NTU)	18.6	18.9	22.0	21.4	22.3	22.7	20.98	-
SS (mg/L)	18.0	15.0	17.0	16.0	24.0	25.0	19.17	-
Remarks	Derrick lighter CM38 (B21601V) and dredger were in operation.							

Station	IMOS						Co-ordinates	
Time (hh:mm)	8:52-8:54						Northing	Easting
Water Depth (m)	20.4						22.21.041	113.55.156
Monitoring Depth (m)	1.0		10.2		19.4			
Trial	Trial 1	Trial 2	Trial 1	Trial 2	Trial 1	Trial 2	Depth-averaged	Bottom
Water Temperature (°C)	23.0	23.0	23.0	23.0	23.0	23.0	23.99	-
Salinity (ppt)	34.5	34.4	34.5	34.4	34.4	34.5	34.46	-
pH	8.3	8.2	8.3	8.2	8.2	8.2	8.22	-
D.O. Saturation (%)	79.4	80.0	79.4	80.9	83.1	79.4	80.37	-
D.O. (mg/L)	5.6	5.6	5.6	5.7	5.9	5.6	5.65	5.72
Turbidity (NTU)	26.3	26.7	35.1	34.1	35.6	33.9	31.95	-
SS (mg/L)	17.0	18.0	26.0	23.0	22.0	20.0	21.00	-
Remarks	Derrick lighter CM38 (B21601V) and dredger were in operation.							

Station	C3 (NM6)						Co-ordinates	
Time (hh:mm)	10:09-10:10						Northing	Easting
Water Depth (m)	6.9						22.21.723	113.55.505
Monitoring Depth (m)	1.0		3.5		5.9			
Trial	Trial 1	Trial 2	Trial 1	Trial 2	Trial 1	Trial 2	Depth-averaged	Bottom
Water Temperature (°C)	21.2	21.2	21.2	21.2	21.1	21.2	21.19	-
Salinity (ppt)	34.3	34.4	34.3	34.4	34.3	34.4	34.36	-
pH	8.3	8.3	8.2	8.3	8.2	8.3	8.24	-
D.O. Saturation (%)	95.5	92.2	96.8	92.5	99.2	93.8	95.00	-
D.O. (mg/L)	6.9	6.7	7.0	6.7	7.2	6.8	6.90	7.02
Turbidity (NTU)	18.5	18.2	20.7	20.6	23.6	23.6	20.90	-
SS (mg/L)	16.0	14.0	18.0	20.0	18.0	14.0	16.33	-
Remarks	Derrick lighter CM38 (B21601V) and dredger were in operation.							

Station	IMO6						Co-ordinates	
Time (hh:mm)	8:41-8:43						Northing	Easting
Water Depth (m)	19.4						22.21.723	113.55.505
Monitoring Depth (m)	1.0		9.7		18.4			
Trial	Trial 1	Trial 2	Trial 1	Trial 2	Trial 1	Trial 2	Depth-averaged	Bottom
Water Temperature (°C)	23.0	23.0	23.0	23.0	23.0	23.0	23.00	-
Salinity (ppt)	34.4	34.5	34.5	34.5	34.4	34.5	34.45	-
pH	8.2	8.3	8.2	8.3	8.1	8.2	8.21	-
D.O. Saturation (%)	84.9	84.1	85.8	84.3	89.9	84.4	85.57	-
D.O. (mg/L)	6.0	5.9	6.0	5.9	6.3	5.9	6.02	6.13
Turbidity (NTU)	19.9	19.7	21.6	21.5	23.3	24.2	21.73	-
SS (mg/L)	17.0	20.0	17.0	18.0	21.0	25.0	19.67	-
Remarks	Derrick lighter CM38 (B21601V) and dredger were in operation.							

Station	IMO1						Co-ordinates	
Time (hh:mm)	9:04-9:05						Northing	Easting
Water Depth (m)	19.2						22.21.731	113.54.582
Monitoring Depth (m)	1.0		9.6		18.2			
Trial	Trial 1	Trial 2	Trial 1	Trial 2	Trial 1	Trial 2	Depth-averaged	Bottom
Water Temperature (°C)	23.0	23.0	22.6	22.8	22.9	22.9	22.90	-
Salinity (ppt)	34.5	30.4	34.5	34.0	33.5	34.1	33.50	-
pH	8.2	8.2	8.2	8.2	8.2	8.1	8.18	-
D.O. Saturation (%)	79.0	78.5	78.4	81.4	78.7	84.2	80.03	-
D.O. (mg/L)	5.6	5.7	5.6	5.8	5.6	5.9	5.67	5.76
Turbidity (NTU)	18.0	18.5	20.1	20.0	21.3	21.1	19.83	-
SS (mg/L)	18.0	20.0	18.0	15.0	15.0	17.0	17.17	-
Remarks	Derrick lighter CM38 (B21601V) and dredger were in operation.							

Station	MPB1						Co-ordinates	
Time (hh:mm)	9:45-9:46						Northing	Easting
Water Depth (m)	9.4						22.21.331	113.54.843
Monitoring Depth (m)	1.0		4.7		8.4			
Trial	Trial 1	Trial 2	Trial 1	Trial 2	Trial 1	Trial 2	Depth-averaged	Bottom
Water Temperature (°C)	21.4	21.4	21.3	21.3	21.4	21.3	21.35	-
Salinity (ppt)	34.1	34.2	33.9	34.1	34.0	33.9	34.04	-
pH	8.2	8.3	8.2	8.2	8.2	8.2	8.23	-
D.O. Saturation (%)	85.0	83.5	84.0	86.3	84.6	88.7	85.35	-
D.O. (mg/L)	6.2	6.1	6.1	6.3	6.1	6.5	6.20	6.30
Turbidity (NTU)	26.0	26.1	29.4	29.3	26.5	26.2	27.25	-
SS (mg/L)	32.0	37.0	20.0	23.0	24.0	25.0	26.67	-
Remarks	Derrick lighter CM38 (B21601V) and dredger were in operation.							

Station	IMO2						Co-ordinates	
Time (hh:mm)	9:14-9:15						Northing	Easting
Water Depth (m)	14.0						22.21.331	113.54.843
Monitoring Depth (m)	1.0		7.0		13.0			
Trial	Trial 1	Trial 2	Trial 1	Trial 2	Trial 1	Trial 2	Depth-averaged	Bottom
Water Temperature (°C)	23.0	23.0	22.5	22.4	22.6	22.3	22.64	-
Salinity (ppt)	34.5	34.5	34.6	34.4	34.3	34.4	34.44	-
pH	8.2	8.3	8.3	8.2	8.3	8.2	8.25	-
D.O. Saturation (%)	79.2	78.6	78.4	81.0	78.4	82.2	79.63	-
D.O. (mg/L)	5.6	5.5	5.6	5.8	5.6	5.9	5.64	5.71
Turbidity (NTU)	18.4	18.3	19.1	19.4	20.5	20.8	19.42	-
SS (mg/L)	12.0	16.0	24.0	22.0	17.0	14.0	17.50	-
Remarks	Derrick lighter CM38 (B21601V) and dredger were in operation.							

Station	MPB2						Co-ordinates	
Time (hh:mm)	9:55-9:56						Northing	Easting
Water Depth (m)	9.2						22.21.331	113.54.843
Monitoring Depth (m)	1.0		4.6		8.2			
Trial	Trial 1	Trial 2	Trial 1	Trial 2	Trial 1	Trial 2	Depth-averaged	Bottom
Water Temperature (°C)	21.3	21.3	21.3	21.3	21.3	21.4	21.32	-
Salinity (ppt)	31.9	34.1	34.2	34.2	34.2	34.2	33.79	-
pH	8.3	8.3	8.3	8.3	8.3	8.3	8.29	-
D.O. Saturation (%)	82.7	82.2	82.4	83.1	82.7	83.2	82.72	-
D.O. (mg/L)	6.1	6.0	6.0	6.0	6.0	6.0	6.02	6.02
Turbidity (NTU)	29.3	30.3	32.4	31.1	31.7	31.1	30.98	-
SS (mg/L)	24.0	27.0	18.0	21.0	18.0	20.0	21.33	-
Remarks	Derrick lighter CM38 (B21601V) and dredger were in operation.							

Station	IMO3						Co-ordinates	
Time (hh:mm)							Northing	Easting
Water Depth (m)								
Monitoring Depth (m)								
Trial	Trial 1	Trial 2	Trial 1	Trial 2	Trial 1	Trial 2	Depth-averaged	Bottom
Water Temperature (°C)	-	-	-	-	-	-		
Salinity (ppt)	-	-	-	-	-	-		
pH	-	-	-	-	-	-		
D.O. Saturation (%)	-	-	-	-	-	-		
D.O. (mg/L)	-	-	-	-	-	-		
Turbidity (NTU)	-	-	-	-	-	-		
SS (mg/L)	-	-	-	-	-	-		
Remarks								

Station	MP						Co-ordinates	
Time (hh:mm)	9:32-9:33						Northing	Easting
Water Depth (m)	5.4							
Monitoring Depth (m)	1.0		2.7		4.4			
Trial	Trial 1	Trial 2	Trial 1	Trial 2	Trial 1	Trial 2	Depth-averaged	Bottom
Water Temperature (°C)	21.7	21.6	-	-	21.5	21.6	21.61	-
Salinity (ppt)	33.6	33.8	-	-	33.7	33.8	33.71	-
pH	8.1	8.1	-	-	8.0	8.1	8.08	-
D.O. Saturation (%)	84.6	82.0	-	-	84.1	83.1	83.45	-
D.O. (mg/L)	6.1	5.9	-	-	6.1	6.0	6.04	6.06
Turbidity (NTU)	17.0	17.0	-	-	17.5	17.0	17.13	-
SS (mg/L)	18.0	20.0	-	-	12.0	13.0	15.75	-
Remarks	Derrick lighter CM38 (B21601V) and dredger were in operation.							

Station	IMO4						Co-ordinates	
Time (hh:mm)							Northing	Easting
Water Depth (m)								
Monitoring Depth (m)								
Trial	Trial 1	Trial 2	Trial 1	Trial 2	Trial 1	Trial 2	Depth-averaged	Bottom
Water Temperature (°C)	-	-	-	-	-	-		
Salinity (ppt)	-	-	-	-	-	-		
pH	-	-	-	-	-	-		
D.O. Saturation (%)	-	-	-	-	-	-		
D.O. (mg/L)	-	-	-	-	-	-		
Turbidity (NTU)	-	-	-	-	-	-		
SS (mg/L)	-	-	-	-	-	-		
Remarks								

Compliance with Action and Limit Level

Parameter	As in EM&A		Mean (C1+C3)*130%		IMO1		IMO2		IMO3		IMO4		IMOS		IMO6		MPB1		MPB2		MP		
	Action Level	Limit Level	Action Level	Limit Level	Exceedance of Action Level	Exceedance of Limit Level	Exceedance of Action Level	Exceedance of Limit Level	Exceedance of Action Level	Exceedance of Limit Level	Exceedance of Action Level	Exceedance of Limit Level	Exceedance of Action Level	Exceedance of Limit Level	Exceedance of Action Level	Exceedance of Limit Level	Exceedance of Action Level	Exceedance of Limit Level	Exceedance of Action Level	Exceedance of Limit Level	Exceedance of Action Level	Exceedance of Limit Level	
DO (Bottom)	3.3	2.5	7.0	7.0	N	N	N	N	-	-	-	-	N	N	N	N	N	N	N	N	N	N	N
DO (Depth-averaged)	4.2	4.0	7.0	7.0	N	N	N	N	-	-	-	-	N	N	N	N	N	N	N	N	N	N	N
Turbidity (Depth-averaged)	29.0	49.0	27.2	27.2	N	N	N	N	-	-	-	-	Y	N	N	N	N	N	Y	N	N	N	N
SS (Depth-averaged)	24.0	37.0	23.1	23.1	N	N	N	N	-	-	-	-	N	N	N	N	N	Y	N	N	N	N	N

Sampling Date	11/19/09
Weather & Ambient Temperature	Fine, 15C

Mid-Flood

Station	C1 (NM3)						Co-ordinates	
Time (hh:mm)	9:11-9:14						Northing	Easting
Water Depth (m)	16.4						22.22.030	113.55.035
Monitoring Depth (m)	1.0		8.2		15.4			
Trial	Trial 1	Trial 2	Trial 1	Trial 2	Trial 1	Trial 2	Depth-averaged	Bottom
Water Temperature (°C)	22.3	22.3	22.3	22.3	22.2	22.2	22.38	-
Salinity (ppt)	34.4	34.4	34.3	34.4	34.3	34.3	34.35	-
pH	8.2	8.2	8.2	8.2	8.1	8.1	8.17	-
D.O. Saturation (%)	102.6	103.9	103.1	103.9	103.5	104.7	103.62	-
D.O. (mg/L)	7.3	7.4	7.3	7.4	7.4	7.5	7.38	7.42
Turbidity (NTU)	6.3	5.9	7.2	7.5	9.6	9.4	7.65	-
SS (mg/L)	22.0	21.0	17.0	16.0	19.0	18.0	18.83	-
Remarks	Derrick lighter CM38 (B21601V) and Dredger were in operation.							

Station	IM05						Co-ordinates	
Time (hh:mm)	9:35-9:38						Northing	Easting
Water Depth (m)	21.4						22.22.030	113.55.035
Monitoring Depth (m)	1.0		10.7		20.4			
Trial	Trial 1	Trial 2	Trial 1	Trial 2	Trial 1	Trial 2	Depth-averaged	Bottom
Water Temperature (°C)	22.2	22.2	22.0	22.0	21.9	22.0	22.04	-
Salinity (ppt)	34.6	34.6	34.5	34.5	34.4	34.4	34.50	-
pH	8.3	8.3	8.3	8.2	8.2	8.2	8.24	-
D.O. Saturation (%)	77.4	78.0	76.8	77.1	76.1	76.3	76.95	-
D.O. (mg/L)	5.5	5.6	5.5	5.5	5.5	5.5	5.50	5.47
Turbidity (NTU)	8.8	9.1	10.4	11.1	14.5	15.1	11.50	-
SS (mg/L)	17.0	20.0	19.0	20.0	21.0	24.0	20.17	-
Remarks	Derrick lighter CM38 (B21601V) and Dredger were in operation.							

Station	C3 (NM6)						Co-ordinates	
Time (hh:mm)	10:55-10:57						Northing	Easting
Water Depth (m)	6.2						22.21.676	113.55.580
Monitoring Depth (m)	1.0		3.1		5.2			
Trial	Trial 1	Trial 2	Trial 1	Trial 2	Trial 1	Trial 2	Depth-averaged	Bottom
Water Temperature (°C)	21.8	21.8	21.8	21.8	21.8	21.8	21.79	-
Salinity (ppt)	34.4	34.4	34.5	34.5	34.6	34.6	34.51	-
pH	8.3	8.3	8.3	8.3	8.3	8.3	8.28	-
D.O. Saturation (%)	90.5	91.4	91.8	90.9	92.1	92.1	91.47	-
D.O. (mg/L)	6.5	6.6	6.6	6.5	6.6	6.6	6.57	6.62
Turbidity (NTU)	3.9	3.8	4.0	4.0	4.9	4.6	4.23	-
SS (mg/L)	20.0	17.0	17.0	14.0	18.0	15.0	16.83	-
Remarks	Derrick lighter CM38 (B21601V) and Dredger were in operation.							

Station	IM06						Co-ordinates	
Time (hh:mm)	9:23-9:25						Northing	Easting
Water Depth (m)	18.8						22.21.676	113.55.580
Monitoring Depth (m)	1.0		9.4		17.8			
Trial	Trial 1	Trial 2	Trial 1	Trial 2	Trial 1	Trial 2	Depth-averaged	Bottom
Water Temperature (°C)	22.2	22.3	22.1	22.0	22.0	22.0	22.10	-
Salinity (ppt)	34.5	34.6	34.5	34.5	34.4	34.4	34.47	-
pH	8.2	8.3	8.2	8.2	8.2	8.2	8.21	-
D.O. Saturation (%)	97.5	97.5	98.6	98.3	98.3	99.1	98.22	-
D.O. (mg/L)	7.0	6.9	7.1	7.0	7.0	7.1	7.01	7.06
Turbidity (NTU)	9.8	9.7	11.2	11.8	13.5	13.6	11.60	-
SS (mg/L)	21.0	26.0	24.0	28.0	28.0	23.0	24.67	-
Remarks	Derrick lighter CM38 (B21601V) and Dredger were in operation.							

Station	IMO1						Co-ordinates	
Time (hh:mm)	10:02-10:04						Northing	Easting
Water Depth (m)	18.8						22.21.709	113.54.520
Monitoring Depth (m)	1.0		9.4		17.8			
Trial	Trial 1	Trial 2	Trial 1	Trial 2	Trial 1	Trial 2	Depth-averaged	Bottom
Water Temperature (°C)	21.9	21.9	21.9	21.9	21.8	21.8	21.88	-
Salinity (ppt)	34.5	34.5	34.5	34.5	34.4	34.4	34.44	-
pH	8.3	8.3	8.3	8.3	8.2	8.2	8.26	-
D.O. Saturation (%)	77.2	77.9	76.4	76.6	76.9	77.1	77.02	-
D.O. (mg/L)	5.5	5.6	5.5	5.5	5.5	5.6	5.52	5.54
Turbidity (NTU)	10.8	11.2	15.9	15.7	19.2	18.1	15.15	-
SS (mg/L)	26.0	31.0	18.0	21.0	33.0	29.0	26.33	-
Remarks	Derrick lighter CM38 (B21601V) and Dredger were in operation.							

Station	MPB1						Co-ordinates	
Time (hh:mm)	10:24-10:27						Northing	Easting
Water Depth (m)	7.8						22.21.709	113.54.520
Monitoring Depth (m)	1.0		3.9		6.8			
Trial	Trial 1	Trial 2	Trial 1	Trial 2	Trial 1	Trial 2	Depth-averaged	Bottom
Water Temperature (°C)	21.8	21.8	21.6	21.6	21.6	21.6	21.64	-
Salinity (ppt)	34.2	34.2	34.3	34.3	34.3	34.3	34.27	-
pH	8.3	8.3	8.3	8.3	8.3	8.3	8.26	-
D.O. Saturation (%)	78.0	78.1	78.3	78.1	79.2	78.4	78.35	-
D.O. (mg/L)	5.6	5.6	5.7	5.6	5.7	5.7	5.65	5.68
Turbidity (NTU)	10.7	10.3	13.5	13.7	16.6	16.9	13.62	-
SS (mg/L)	22.0	27.0	19.0	19.0	23.0	17.0	20.83	-
Remarks	Derrick lighter CM38 (B21601V) and Dredger were in operation.							

Station	IMO2						Co-ordinates	
Time (hh:mm)	9:50-9:53						Northing	Easting
Water Depth (m)	14.6						22.21.378	113.54.840
Monitoring Depth (m)	1.0		7.3		13.6			
Trial	Trial 1	Trial 2	Trial 1	Trial 2	Trial 1	Trial 2	Depth-averaged	Bottom
Water Temperature (°C)	21.9	21.9	21.6	21.6	21.6	21.6	21.71	-
Salinity (ppt)	34.5	34.5	34.6	34.6	34.6	34.6	34.50	-
pH	8.3	8.3	8.3	8.3	8.2	8.2	8.25	-
D.O. Saturation (%)	74.8	75.2	74.3	74.7	75.1	75.2	74.88	-
D.O. (mg/L)	5.4	5.4	5.4	5.4	5.4	5.4	5.38	5.41
Turbidity (NTU)	5.5	5.6	7.4	7.1	8.4	8.2	7.03	-
SS (mg/L)	19.0	19.0	24.0	25.0	24.0	20.0	21.83	-
Remarks	Derrick lighter CM38 (B21601V) and Dredger were in operation.							

Station	MPB2						Co-ordinates	
Time (hh:mm)	10:36-10:38						Northing	Easting
Water Depth (m)	8.2						22.21.378	113.54.840
Monitoring Depth (m)	1.0		4.1		7.2			
Trial	Trial 1	Trial 2	Trial 1	Trial 2	Trial 1	Trial 2	Depth-averaged	Bottom
Water Temperature (°C)	21.2	21.2	20.9	20.8	20.7	20.7	20.92	-
Salinity (ppt)	34.3	34.4	34.4	34.4	34.4	34.4	34.39	-
pH	8.3	8.3	8.3	8.3	8.3	8.3	8.27	-
D.O. Saturation (%)	84.8	84.9	85.2	85.4	86.6	85.7	85.43	-
D.O. (mg/L)	6.2	6.2	6.2	6.3	6.3	6.3	6.24	6.31
Turbidity (NTU)	11.2	11.5	14.6	14.3	16.8	17.0	14.23	-
SS (mg/L)	31.0	27.0	24.0	19.0	24.0	24.0	24.83	-
Remarks	Derrick lighter CM38 (B21601V) and Dredger were in operation.							

Station	IMO3						Co-ordinates	
Time (hh:mm)	10:15-10:16						Northing	Easting
Water Depth (m)	5.1						22.21.378	113.54.840
Monitoring Depth (m)	1.0		2.6		4.1			
Trial	Trial 1	Trial 2	Trial 1	Trial 2	Trial 1	Trial 2	Depth-averaged	Bottom
Water Temperature (°C)	21.8	21.8	-	-	21.8	21.8	21.82	-
Salinity (ppt)	34.1	34.2	-	-	34.0	34.0	34.06	-
pH	8.2	8.2	-	-	8.2	8.2	8.22	-
D.O. Saturation (%)	74.3	74.8	-	-	75.1	74.6	74.70	-
D.O. (mg/L)	5.3	5.4	-	-	5.4	5.4	5.38	5.39
Turbidity (NTU)	8.7	8.9	-	-	10.6	10.2	9.60	-
SS (mg/L)	16.0	15.0	-	-	16.0	14.0	15.25	-
Remarks	Derrick lighter CM38 (B21601V) and Dredger were in operation.							

Station	MP						Co-ordinates	
Time (hh:mm)	10:15-10:16						Northing	Easting
Water Depth (m)	5.1						22.21.378	113.54.840
Monitoring Depth (m)	1.0		2.6		4.1			
Trial	Trial 1	Trial 2	Trial 1	Trial 2	Trial 1	Trial 2	Depth-averaged	Bottom
Water Temperature (°C)	21.8	21.8	-	-	21.8	21.8	21.82	-
Salinity (ppt)	34.1	34.2	-	-	34.0	34.0	34.06	-
pH	8.2	8.2	-	-	8.2	8.2	8.22	-
D.O. Saturation (%)	74.3	74.8	-	-	75.1	74.6	74.70	-
D.O. (mg/L)	5.3	5.4	-	-	5.4	5.4	5.38	5.39
Turbidity (NTU)	8.7	8.9	-	-	10.6	10.2	9.60	-
SS (mg/L)	16.0	15.0	-	-	16.0	14.0	15.25	-
Remarks	Derrick lighter CM38 (B21601V) and Dredger were in operation.							

Station	IMO4						Co-ordinates	
Time (hh:mm)	10:15-10:16						Northing	Easting
Water Depth (m)	5.1						22.21.378	113.54.840
Monitoring Depth (m)	1.0		2.6		4.1			
Trial	Trial 1	Trial 2	Trial 1	Trial 2	Trial 1	Trial 2	Depth-averaged	Bottom
Water Temperature (°C)	-	-	-	-	-	-	-	-
Salinity (ppt)	-	-	-	-	-	-	-	-
pH	-	-	-	-	-	-	-	-
D.O. Saturation (%)	-	-	-	-	-	-	-	-
D.O. (mg/L)	-	-	-	-	-	-	-	-
Turbidity (NTU)	-	-	-	-	-	-	-	-
SS (mg/L)	-	-	-	-	-	-	-	-
Remarks								

Compliance with Action and Limit Level

Parameter	As in EM&A		Mean (C1+C3)*130%		IMO1		IMO2		IMO3		IMO4		IM05		IM06		MPB1		MPB2		MP	
	Action Level	Limit Level	Action Level	Limit Level	Exceedance of Action Level	Exceedance of Limit Level	Exceedance of Action Level	Exceedance of Limit Level	Exceedance of Action Level	Exceedance of Limit Level	Exceedance of Action Level	Exceedance of Limit Level	Exceedance of Action Level	Exceedance of Limit Level	Exceedance of Action Level	Exceedance of Limit Level	Exceedance of Action Level	Exceedance of Limit Level	Exceedance of Action Level	Exceedance of Limit Level	Exceedance of Action Level	Exceedance of Limit Level
DO (Bottom)	3.3	2.5	7.0	7.0	N	N	N	N	-	-	-	-	N	N	N	N	N	N	N	N	N	N
DO (Depth-averaged)	4.2	4.0	7.0	7.0	N	N	N	N	-	-	-	-	N	N	N	N	N	N	N	N	N	N
Turbidity (Depth-averaged)	29.0	49.0	7.7	7.7	N	N	N	N	-	-	-	-	N	N	N	N	N	N	N	N	N	N
SS (Depth-averaged)	24.0	37.0	23.2	23.2	Y	N	N	N	-	-	-	-	N	N	Y	N	N	N	Y	N	N	N

Sampling Date	11/20/09
Weather & Ambient Temperature	Sunny, 15C

Mid-Flood

Station	C1 (NM3)						Co-ordinates	
Time (hh:mm)	9:44-9:46						Northing	Easting
Water Depth (m)	16.0						22.21.989	113.55.229
Monitoring Depth (m)	1.0		8.0		15.0			
Trial	Trial 1	Trial 2	Trial 1	Trial 2	Trial 1	Trial 2	Depth-averaged	Bottom
Water Temperature (°C)	22.0	22.0	22.0	21.9	21.0	22.0	21.96	-
Salinity (ppt)	34.5	34.5	34.5	34.4	34.4	34.4	34.44	-
pH	8.2	8.2	8.2	8.2	8.2	8.2	8.22	-
D.O. Saturation (%)	107.9	106.0	107.1	108.5	109.6	106.7	107.63	-
D.O. (mg/L)	7.7	7.6	7.7	7.8	7.9	7.6	7.71	7.75
Turbidity (NTU)	17.1	17.6	22.1	22.1	24.7	23.0	21.10	-
SS (mg/L)	14.0	11.0	12.0	13.0	15.0	12.83	-	-
Remarks	Derrick lighter CM38 (B21601V) and Dredger were in operation.							

Station	IMOS						Co-ordinates	
Time (hh:mm)	10:09-10:10						Northing	Easting
Water Depth (m)	19.8						22.21.989	113.55.229
Monitoring Depth (m)	1.0		9.9		18.8			
Trial	Trial 1	Trial 2	Trial 1	Trial 2	Trial 1	Trial 2	Depth-averaged	Bottom
Water Temperature (°C)	21.8	21.8	21.7	21.7	21.7	21.7	21.72	-
Salinity (ppt)	34.6	34.6	34.5	34.6	34.6	34.6	34.67	-
pH	8.3	8.3	8.3	8.3	8.3	8.3	8.30	-
D.O. Saturation (%)	90.2	88.8	91.1	89.1	91.7	89.4	90.05	-
D.O. (mg/L)	6.5	6.4	6.6	6.4	6.6	6.4	6.48	6.52
Turbidity (NTU)	21.8	21.2	26.2	26.5	27.5	26.4	24.93	-
SS (mg/L)	19.0	19.0	17.0	20.0	18.0	18.0	18.50	-
Remarks	Derrick lighter CM38 (B21601V) and Dredger were in operation.							

Station	C3 (NM6)						Co-ordinates	
Time (hh:mm)	11:17-11:18						Northing	Easting
Water Depth (m)	7.1						22.21.698	113.55.611
Monitoring Depth (m)	1.0		3.6		6.1			
Trial	Trial 1	Trial 2	Trial 1	Trial 2	Trial 1	Trial 2	Depth-averaged	Bottom
Water Temperature (°C)	21.3	21.3	21.3	21.3	21.3	21.3	21.33	-
Salinity (ppt)	34.5	34.6	33.0	34.5	34.5	34.5	34.26	-
pH	8.3	8.3	8.3	8.3	8.3	8.3	8.26	-
D.O. Saturation (%)	96.0	95.6	99.4	95.1	101.2	95.9	97.20	-
D.O. (mg/L)	7.0	6.9	7.3	6.9	7.3	6.9	7.05	7.14
Turbidity (NTU)	16.5	16.8	17.1	17.2	18.2	18.7	17.49	-
SS (mg/L)	16.0	14.0	18.0	16.0	15.0	18.0	16.17	-
Remarks	Derrick lighter CM38 (B21601V) and Dredger were in operation.							

Station	IMO6						Co-ordinates	
Time (hh:mm)	17:6						Northing	Easting
Water Depth (m)	17.6						22.21.698	113.55.611
Monitoring Depth (m)	1.0		8.8		16.6			
Trial	Trial 1	Trial 2	Trial 1	Trial 2	Trial 1	Trial 2	Depth-averaged	Bottom
Water Temperature (°C)	21.4	21.9	21.8	21.8	21.8	21.7	21.73	-
Salinity (ppt)	34.6	34.5	34.3	34.5	34.4	34.3	34.45	-
pH	8.1	8.2	8.2	8.2	8.2	8.2	8.19	-
D.O. Saturation (%)	107.7	102.6	106.7	104.7	106.5	108.6	106.13	-
D.O. (mg/L)	7.8	7.4	7.7	7.5	7.7	7.8	7.63	7.74
Turbidity (NTU)	21.1	21.5	25.0	25.0	25.6	25.6	24.30	-
SS (mg/L)	23.0	25.0	22.0	23.0	23.0	27.0	23.67	-
Remarks	Derrick lighter CM38 (B21601V) and Dredger were in operation.							

Station	IMO1						Co-ordinates	
Time (hh:mm)	10:29-10:31						Northing	Easting
Water Depth (m)	17.2						22.21.622	113.54.588
Monitoring Depth (m)	1.0		8.6		16.2			
Trial	Trial 1	Trial 2	Trial 1	Trial 2	Trial 1	Trial 2	Depth-averaged	Bottom
Water Temperature (°C)	21.5	21.5	21.5	21.5	21.5	21.5	21.53	-
Salinity (ppt)	34.6	34.5	34.5	33.6	34.5	34.6	34.38	-
pH	8.3	8.3	8.3	8.3	8.3	8.3	8.30	-
D.O. Saturation (%)	85.1	85.0	87.7	85.6	85.8	89.0	86.37	-
D.O. (mg/L)	6.1	6.1	6.3	6.2	6.2	6.4	6.24	6.31
Turbidity (NTU)	20.3	20.7	24.6	24.0	24.2	23.3	22.85	-
SS (mg/L)	22.0	19.0	18.0	16.0	14.0	14.0	17.17	-
Remarks	Derrick lighter CM38 (B21601V) and Dredger were in operation.							

Station	MPB1						Co-ordinates	
Time (hh:mm)	10:53-10:54						Northing	Easting
Water Depth (m)	9.2						22.21.362	113.54.927
Monitoring Depth (m)	1.0		4.6		8.2			
Trial	Trial 1	Trial 2	Trial 1	Trial 2	Trial 1	Trial 2	Depth-averaged	Bottom
Water Temperature (°C)	21.4	21.4	21.4	21.4	21.4	21.3	21.36	-
Salinity (ppt)	34.2	34.2	34.2	33.8	34.2	34.2	34.14	-
pH	8.3	8.3	8.2	8.3	8.3	8.2	8.25	-
D.O. Saturation (%)	89.5	93.9	97.4	90.3	91.2	102.5	94.13	-
D.O. (mg/L)	6.5	6.8	7.1	6.6	6.6	7.4	6.83	7.03
Turbidity (NTU)	17.1	17.0	18.6	18.7	19.8	19.7	18.48	-
SS (mg/L)	16.0	16.0	16.0	17.0	17.0	18.0	16.67	-
Remarks	Derrick lighter CM38 (B21601V) and Dredger were in operation.							

Station	IMO2						Co-ordinates	
Time (hh:mm)	10:19-10:20						Northing	Easting
Water Depth (m)	15.4						22.21.362	113.54.927
Monitoring Depth (m)	1.0		7.7		14.4			
Trial	Trial 1	Trial 2	Trial 1	Trial 2	Trial 1	Trial 2	Depth-averaged	Bottom
Water Temperature (°C)	21.6	21.6	21.6	21.6	21.6	21.6	21.58	-
Salinity (ppt)	34.5	34.5	34.4	34.4	34.5	34.3	34.43	-
pH	8.2	8.3	8.3	8.2	8.3	8.2	8.24	-
D.O. Saturation (%)	93.9	94.2	94.0	95.4	93.6	96.5	94.60	-
D.O. (mg/L)	6.8	6.8	6.8	6.9	6.8	7.0	6.82	6.86
Turbidity (NTU)	19.1	19.8	20.5	21.6	22.0	22.7	20.95	-
SS (mg/L)	24.0	20.0	19.0	17.0	14.0	17.0	18.50	-
Remarks	Derrick lighter CM38 (B21601V) and Dredger were in operation.							

Station	MPB2						Co-ordinates	
Time (hh:mm)	11:02-11:03						Northing	Easting
Water Depth (m)	8.8						22.21.362	113.54.927
Monitoring Depth (m)	1.0		4.4		7.8			
Trial	Trial 1	Trial 2	Trial 1	Trial 2	Trial 1	Trial 2	Depth-averaged	Bottom
Water Temperature (°C)	21.4	21.4	21.4	21.4	21.4	21.4	21.41	-
Salinity (ppt)	34.2	34.2	34.2	34.3	34.3	34.3	34.36	-
pH	8.3	8.3	8.3	8.3	8.3	8.3	8.26	-
D.O. Saturation (%)	88.7	91.2	89.3	92.7	89.6	95.5	91.17	-
D.O. (mg/L)	6.4	6.6	6.5	6.7	6.5	6.9	6.60	6.70
Turbidity (NTU)	16.4	16.2	17.1	17.6	18.1	18.6	17.33	-
SS (mg/L)	16.0	16.0	17.0	15.0	14.0	13.0	15.17	-
Remarks	Derrick lighter CM38 (B21601V) and Dredger were in operation.							

Station	IMO3						Co-ordinates	
Time (hh:mm)	10:45-10:46						Northing	Easting
Water Depth (m)	5.6						22.21.362	113.54.927
Monitoring Depth (m)	1.0		2.8		4.6			
Trial	Trial 1	Trial 2	Trial 1	Trial 2	Trial 1	Trial 2	Depth-averaged	Bottom
Water Temperature (°C)	21.6	21.6	21.5	21.6	21.6	21.6	21.56	-
Salinity (ppt)	34.2	34.1	34.1	34.3	34.3	34.1	34.18	-
pH	8.3	8.3	8.3	8.3	8.3	8.3	8.26	-
D.O. Saturation (%)	87.4	86.5	86.5	88.1	86.5	86.6	86.93	-
D.O. (mg/L)	6.3	6.3	6.3	6.4	6.3	6.3	6.28	6.26
Turbidity (NTU)	21.0	21.5	22.4	22.3	22.5	22.5	22.03	-
SS (mg/L)	20.0	18.0	22.0	19.0	22.0	19.0	20.00	-
Remarks	Derrick lighter CM38 (B21601V) and Dredger were in operation.							

Station	MP						Co-ordinates	
Time (hh:mm)	10:45-10:46						Northing	Easting
Water Depth (m)	5.6						22.21.362	113.54.927
Monitoring Depth (m)	1.0		2.8		4.6			
Trial	Trial 1	Trial 2	Trial 1	Trial 2	Trial 1	Trial 2	Depth-averaged	Bottom
Water Temperature (°C)	21.6	21.6	21.5	21.6	21.6	21.6	21.56	-
Salinity (ppt)	34.2	34.1	34.1	34.3	34.3	34.1	34.18	-
pH	8.3	8.3	8.3	8.3	8.3	8.3	8.26	-
D.O. Saturation (%)	87.4	86.5	86.5	88.1	86.5	86.6	86.93	-
D.O. (mg/L)	6.3	6.3	6.3	6.4	6.3	6.3	6.28	6.26
Turbidity (NTU)	21.0	21.5	22.4	22.3	22.5	22.5	22.03	-
SS (mg/L)	20.0	18.0	22.0	19.0	22.0	19.0	20.00	-
Remarks	Derrick lighter CM38 (B21601V) and Dredger were in operation.							

Station	IMO4						Co-ordinates	
Time (hh:mm)	-						Northing	Easting
Water Depth (m)	-							
Monitoring Depth (m)	-		-		-			
Trial	Trial 1	Trial 2	Trial 1	Trial 2	Trial 1	Trial 2	Depth-averaged	Bottom
Water Temperature (°C)	-	-	-	-	-	-	-	-
Salinity (ppt)	-	-	-	-	-	-	-	-
pH	-	-	-	-	-	-	-	-
D.O. Saturation (%)	-	-	-	-	-	-	-	-
D.O. (mg/L)	-	-	-	-	-	-	-	-
Turbidity (NTU)	-	-	-	-	-	-	-	-
SS (mg/L)	-	-	-	-	-	-	-	-
Remarks								

Compliance with Action and Limit Level

Parameter	As in EM&A		Mean (C1+C3)*130%		IMO1		IMO2		IMO3		IMO4		IMOS		IMO6		MPB1		MPB2		MP		
	Action Level	Limit Level	Action Level	Limit Level	Exceedance of Action Level	Exceedance of Limit Level	Exceedance of Action Level	Exceedance of Limit Level	Exceedance of Action Level	Exceedance of Limit Level	Exceedance of Action Level	Exceedance of Limit Level	Exceedance of Action Level	Exceedance of Limit Level	Exceedance of Action Level	Exceedance of Limit Level	Exceedance of Action Level	Exceedance of Limit Level	Exceedance of Action Level	Exceedance of Limit Level	Exceedance of Action Level	Exceedance of Limit Level	
DO (Bottom)	3.3	2.5	7.4	7.4	N	N	N	N	-	-	-	-	N	N	N	N	N	N	N	N	N	N	N
DO (Depth-averaged)	4.2	4.0	7.4	7.4	N	N	N	N	-	-	-	-	N	N	N	N	N	N	N	N	N	N	N
Turbidity (Depth-averaged)	29.0	49.0	25.0	25.0	N	N	N	N	-	-	-	-	N	N	N	N	N	N	N	N	N	N	N
SS (Depth-averaged)	24.0	37.0	18.9	18.9	N	N	N	N	-	-	-	-	N	N	N	N	N						

Sampling Date	11/21/09
Weather & Ambient Temperature	Cloudy, 23C

Mid-Ebb

Station		C2 (NM5)						Co-ordinates	
Time (hh:mm)		15:22-15:24						Northing	Easting
Water Depth (m)		19.6						22.21.977	113.55.202
Monitoring Depth (m)		1.0		9.8		18.6		Depth-averaged	Bottom
Trial	Trial 1	Trial 2	Trial 1	Trial 2	Trial 1	Trial 2			
Water Temperature (°C)	22.2	22.2	22.2	22.2	22.2	22.2	22.20	-	
Salinity (ppt)	34.4	34.5	34.5	34.4	34.5	34.5	34.47	-	
pH	8.2	8.2	8.2	8.2	8.2	8.2	8.24	-	
D.O. Saturation (%)	70.5	65.0	66.6	71.1	67.1	71.5	68.63	-	
D.O. (mg/L)	5.0	4.6	4.8	5.1	4.8	5.1	4.89	4.94	
Turbidity (NTU)	13.2	12.9	20.6	20.0	20.8	21.7	18.20	-	
SS (mg/L)	21	18	23	26	25	22	22.50	-	
Remarks	Derrick lighter CM38 (B21601V) and Dredger were in operation.								

Station		IMO5						Co-ordinates	
Time (hh:mm)		16:03-16:05						Northing	Easting
Water Depth (m)		20.6						22.21.977	113.55.202
Monitoring Depth (m)		1.0		10.3		19.6		Depth-averaged	Bottom
Trial	Trial 1	Trial 2	Trial 1	Trial 2	Trial 1	Trial 2			
Water Temperature (°C)	21.6	21.6	21.5	21.5	21.4	21.4	21.50	-	
Salinity (ppt)	34.6	34.5	34.7	34.6	34.6	34.7	34.61	-	
pH	8.3	8.3	8.3	8.3	8.3	8.3	8.27	-	
D.O. Saturation (%)	55.1	55.5	54.9	54.3	57.7	56.1	55.60	-	
D.O. (mg/L)	4.0	4.0	4.0	3.9	4.2	4.1	4.01	4.11	
Turbidity (NTU)	10.8	10.6	17.4	17.9	20.5	20.8	16.33	-	
SS (mg/L)	14	16	14	15	15	15	14.83	-	
Remarks	Derrick lighter CM38 (B21601V) and Dredger were in operation.								

Station		IMO1						Co-ordinates	
Time (hh:mm)		15:41-15:42						Northing	Easting
Water Depth (m)		14.6						22.21.283	113.54.883
Monitoring Depth (m)		1.0		7.3		13.6		Depth-averaged	Bottom
Trial	Trial 1	Trial 2	Trial 1	Trial 2	Trial 1	Trial 2			
Water Temperature (°C)	21.4	21.4	21.2	21.2	21.2	21.2	21.26	-	
Salinity (ppt)	34.5	34.6	34.6	34.5	34.6	34.4	34.55	-	
pH	8.2	8.2	8.2	8.2	8.2	8.2	8.22	-	
D.O. Saturation (%)	63.7	62.4	63.0	62.4	65.0	63.8	63.38	-	
D.O. (mg/L)	4.6	4.5	4.6	4.5	4.7	4.6	4.60	4.68	
Turbidity (NTU)	10.1	10.3	14.9	14.8	18.9	18.6	14.60	-	
SS (mg/L)	13	11	13	14	17	19	14.50	-	
Remarks	Derrick lighter CM38 (B21601V) and Dredger were in operation.								

Station		IMO6						Co-ordinates	
Time (hh:mm)		16:14-16:16						Northing	Easting
Water Depth (m)		18.0						22.21.678	113.55.648
Monitoring Depth (m)		1.0		9.0		17.0		Depth-averaged	Bottom
Trial	Trial 1	Trial 2	Trial 1	Trial 2	Trial 1	Trial 2			
Water Temperature (°C)	21.6	21.6	21.7	21.7	21.7	21.7	21.65	-	
Salinity (ppt)	34.5	34.6	34.6	34.5	34.5	34.6	34.54	-	
pH	8.3	8.3	8.3	8.2	8.2	8.3	8.26	-	
D.O. Saturation (%)	55.6	54.6	55.4	57.9	58.6	56.9	56.50	-	
D.O. (mg/L)	4.0	3.9	4.0	4.2	4.2	4.1	4.07	4.16	
Turbidity (NTU)	10.4	10.6	17.7	17.5	20.3	20.8	16.22	-	
SS (mg/L)	16	16	18	17	18	18	17.17	-	
Remarks	Derrick lighter CM38 (B21601V) and Dredger were in operation.								

Station		IMO2						Co-ordinates	
Time (hh:mm)		15:52-15:53						Northing	Easting
Water Depth (m)		13.5						22.21.470	113.54.462
Monitoring Depth (m)		1.0		6.9		12.8		Depth-averaged	Bottom
Trial	Trial 1	Trial 2	Trial 1	Trial 2	Trial 1	Trial 2			
Water Temperature (°C)	21.1	21.1	21.1	21.1	21.0	21.0	21.06	-	
Salinity (ppt)	34.6	34.6	34.7	34.6	34.6	34.6	34.63	-	
pH	8.3	8.3	8.3	8.3	8.3	8.3	8.26	-	
D.O. Saturation (%)	67.2	68.6	68.0	68.8	72.5	68.7	68.97	-	
D.O. (mg/L)	4.9	5.0	4.9	5.0	5.3	5.0	5.02	5.14	
Turbidity (NTU)	10.7	10.5	18.9	18.6	20.2	20.7	16.60	-	
SS (mg/L)	12	13	10	10	12	11	11.33	-	
Remarks	Derrick lighter CM38 (B21601V) and Dredger were in operation.								

Station		MPB1						Co-ordinates	
Time (hh:mm)		14:51-14:52						Northing	Easting
Water Depth (m)		7.6						22.21.470	113.54.462
Monitoring Depth (m)		1.0		3.8		6.6		Depth-averaged	Bottom
Trial	Trial 1	Trial 2	Trial 1	Trial 2	Trial 1	Trial 2			
Water Temperature (°C)	21.0	21.0	21.1	21.0	21.1	21.1	21.05	-	
Salinity (ppt)	34.3	34.1	34.3	34.1	34.2	34.2	34.19	-	
pH	8.3	8.3	8.3	8.3	8.3	8.3	8.29	-	
D.O. Saturation (%)	62.5	62.1	62.1	62.4	62.4	62.3	62.30	-	
D.O. (mg/L)	4.6	4.5	4.5	4.6	4.6	4.5	4.54	4.55	
Turbidity (NTU)	16.1	15.7	18.5	19.0	20.8	20.4	18.42	-	
SS (mg/L)	27.0	29.0	29.0	34.0	30.0	27.0	29.33	-	
Remarks	Derrick lighter CM38 (B21601V) and Dredger were in operation.								

Station		IMO3						Co-ordinates	
Time (hh:mm)								Northing	Easting
Water Depth (m)									
Monitoring Depth (m)								Depth-averaged	Bottom
Trial	Trial 1	Trial 2	Trial 1	Trial 2	Trial 1	Trial 2			
Water Temperature (°C)	-	-	-	-	-	-	-	-	
Salinity (ppt)	-	-	-	-	-	-	-	-	
pH	-	-	-	-	-	-	-	-	
D.O. Saturation (%)	-	-	-	-	-	-	-	-	
D.O. (mg/L)	-	-	-	-	-	-	-	-	
Turbidity (NTU)	-	-	-	-	-	-	-	-	
SS (mg/L)	-	-	-	-	-	-	-	-	
Remarks									

Station		MPB2						Co-ordinates	
Time (hh:mm)		14:41-14:43						Northing	Easting
Water Depth (m)		8.8							
Monitoring Depth (m)		1.0		4.4		7.8		Depth-averaged	Bottom
Trial	Trial 1	Trial 2	Trial 1	Trial 2	Trial 1	Trial 2			
Water Temperature (°C)	21.1	21.0	21.1	21.1	21.1	21.1	21.05	-	
Salinity (ppt)	34.2	34.3	34.2	34.2	32.6	34.3	33.95	-	
pH	8.3	8.3	8.3	8.3	8.3	8.3	8.29	-	
D.O. Saturation (%)	61.5	62.1	61.6	61.9	61.6	61.9	61.77	-	
D.O. (mg/L)	4.5	4.5	4.5	4.5	4.5	4.5	4.51	4.52	
Turbidity (NTU)	13.1	13.5	17.2	16.8	22.5	23.1	17.70	-	
SS (mg/L)	26	25	22	23	27	29	25.33	-	
Remarks	Derrick lighter CM38 (B21601V) and Dredger were in operation.								

Station		IMO4						Co-ordinates	
Time (hh:mm)								Northing	Easting
Water Depth (m)									
Monitoring Depth (m)								Depth-averaged	Bottom
Trial	Trial 1	Trial 2	Trial 1	Trial 2	Trial 1	Trial 2			
Water Temperature (°C)	-	-	-	-	-	-	-	-	
Salinity (ppt)	-	-	-	-	-	-	-	-	
pH	-	-	-	-	-	-	-	-	
D.O. Saturation (%)	-	-	-	-	-	-	-	-	
D.O. (mg/L)	-	-	-	-	-	-	-	-	
Turbidity (NTU)	-	-	-	-	-	-	-	-	
SS (mg/L)	-	-	-	-	-	-	-	-	
Remarks									

Station		MP						Co-ordinates	
Time (hh:mm)		15:02-15:03						Northing	Easting
Water Depth (m)		5.5							
Monitoring Depth (m)		1.0		2.7		4.5		Depth-averaged	Bottom
Trial	Trial 1	Trial 2	Trial 1	Trial 2	Trial 1	Trial 2			
Water Temperature (°C)	21.1	21.1	21.1	21.1	21.1	21.1	21.09	-	
Salinity (ppt)	34.3	34.2	34.3	34.1	34.1	34.2	34.19	-	
pH	8.2	8.2	8.2	8.1	8.1	8.2	8.15	-	
D.O. Saturation (%)	65.3	66.4	65.7	68.3	70.1	66.0	66.97	-	
D.O. (mg/L)	4.8	4.8	4.8	5.0	5.1	4.8	4.88	4.96	
Turbidity (NTU)	10.5	10.6	11.2	10.9	13.2	12.6	11.50	-	
SS (mg/L)	14	12	12	14	16	14	13.67	-	
Remarks	Derrick lighter CM38 (B21601V) and Dredger were in operation.								

Compliance with Action and Limit Level

Parameter	As in EM&A		C2*130%		IMO1		IMO2		IMO3		IMO4		IMO5		IMO6		MPB1		MPB2		MP	
	Action Level	Limit Level	Action Level	Limit Level	Exceedance of Action Level	Exceedance of Limit Level	Exceedance of Action Level	Exceedance of Limit Level	Exceedance of Action Level	Exceedance of Limit Level	Exceedance of Action Level	Exceedance of Limit Level	Exceedance of Action Level	Exceedance of Limit Level	Exceedance of Action Level	Exceedance of Limit Level	Exceedance of Action Level	Exceedance of Limit Level	Exceedance of Action Level	Exceedance of Limit Level	Exceedance of Action Level	Exceedance of Limit Level
DO (Bottom)	3.3	2.5	4.9	4.9	N	N	N	N	-	-	-	-	N	N	N	N	N	N	N	N	N	N
DO (Depth-averaged)	4.2	4.0	4.9	4.9	N	N	N	N	-	-	-	-	Y	N	Y	N	N	N	N	N	N	N
Turbidity (Depth-averaged)	29.0	49.0	23.7	23.7	N	N	N	N	-	-	-	-	N	N	N	N	N	N	N	N	N	N
SS (Depth-averaged)	24.0	37.0	29.3	29.3	N	N	N	N	-	-	-	-	N	N	N	N	Y	N	N	N	N	N

Sampling Date	11/23/09
Weather & Ambient Temperature	Fine, 14C

Station		C2 (NM5)						Co-ordinates	
Time (hh:mm)		4:57-5:00						Northing	Easting
Water Depth (m)		20.0						22.22.997	113.55.170
Monitoring Depth (m)		1.0		10.0		19.0		Depth-averaged	Bottom
Trial	Trial 1	Trial 2	Trial 1	Trial 2	Trial 1	Trial 2	Depth-averaged	Bottom	
Water Temperature (°C)	21.2	21.2	20.9	20.9	20.5	20.5	20.85	-	
Salinity (ppt)	34.6	34.6	34.7	34.7	34.8	34.8	34.69	-	
pH	8.3	8.3	8.3	8.3	8.3	8.3	8.27	-	
D.O. Saturation (%)	79.7	80.1	81.7	81.9	83.0	82.7	81.52	-	
D.O. (mg/L)	5.8	5.8	6.0	6.0	6.1	6.1	5.94	6.08	
Turbidity (NTU)	2.4	2.3	3.7	3.8	4.9	4.8	3.65	-	
SS (mg/L)	12	13	19	16	14	15	14.83	-	
Remarks	Derrick lighter CM38 (B21601V) and Dredger were in operation.								

Station		IMO1						Co-ordinates	
Time (hh:mm)		4:42-4:45						Northing	Easting
Water Depth (m)		11.8						22.21.493	113.54.434
Monitoring Depth (m)		1.0		5.9		10.8		Depth-averaged	Bottom
Trial	Trial 1	Trial 2	Trial 1	Trial 2	Trial 1	Trial 2	Depth-averaged	Bottom	
Water Temperature (°C)	21.3	21.3	21.2	21.2	21.0	21.0	21.16	-	
Salinity (ppt)	34.7	34.6	34.6	34.6	34.6	34.6	34.63	-	
pH	8.2	8.2	8.2	8.2	8.2	8.2	8.23	-	
D.O. Saturation (%)	79.0	79.2	79.6	80.5	80.4	81.5	80.03	-	
D.O. (mg/L)	5.7	5.7	5.8	5.8	5.9	5.9	5.81	5.90	
Turbidity (NTU)	1.4	1.3	2.1	1.8	2.5	2.3	1.90	-	
SS (mg/L)	10	9	8	6	8	9	8.33	-	
Remarks	Derrick lighter CM38 (B21601V) and Dredger were in operation.								

Station		IMO2						Co-ordinates	
Time (hh:mm)		4:34-4:37						Northing	Easting
Water Depth (m)		10.4						22.21.222	113.54.666
Monitoring Depth (m)		1.0		5.2		9.4		Depth-averaged	Bottom
Trial	Trial 1	Trial 2	Trial 1	Trial 2	Trial 1	Trial 2	Depth-averaged	Bottom	
Water Temperature (°C)	21.4	21.4	21.3	21.3	20.3	20.3	21.01	-	
Salinity (ppt)	34.6	34.6	34.7	34.7	34.7	34.7	34.66	-	
pH	8.3	8.2	8.2	8.2	8.2	8.2	8.21	-	
D.O. Saturation (%)	81.1	81.1	82.1	81.9	82.2	81.7	81.68	-	
D.O. (mg/L)	5.9	5.9	5.9	6.0	6.1	6.0	5.95	6.04	
Turbidity (NTU)	1.3	1.2	1.6	1.5	2.5	2.7	1.80	-	
SS (mg/L)	10	9	9	8	9	8	8.83	-	
Remarks	Derrick lighter CM38 (B21601V) and Dredger were in operation.								

Station		IMO3						Co-ordinates	
Time (hh:mm)								Northing	Easting
Water Depth (m)									
Monitoring Depth (m)								Depth-averaged	Bottom
Trial	Trial 1	Trial 2	Trial 1	Trial 2	Trial 1	Trial 2	Depth-averaged	Bottom	
Water Temperature (°C)	-	-	-	-	-	-	-	-	
Salinity (ppt)	-	-	-	-	-	-	-	-	
pH	-	-	-	-	-	-	-	-	
D.O. Saturation (%)	-	-	-	-	-	-	-	-	
D.O. (mg/L)	-	-	-	-	-	-	-	-	
Turbidity (NTU)	-	-	-	-	-	-	-	-	
SS (mg/L)	-	-	-	-	-	-	-	-	
Remarks									

Station		IMO4						Co-ordinates	
Time (hh:mm)								Northing	Easting
Water Depth (m)									
Monitoring Depth (m)								Depth-averaged	Bottom
Trial	Trial 1	Trial 2	Trial 1	Trial 2	Trial 1	Trial 2	Depth-averaged	Bottom	
Water Temperature (°C)	-	-	-	-	-	-	-	-	
Salinity (ppt)	-	-	-	-	-	-	-	-	
pH	-	-	-	-	-	-	-	-	
D.O. Saturation (%)	-	-	-	-	-	-	-	-	
D.O. (mg/L)	-	-	-	-	-	-	-	-	
Turbidity (NTU)	-	-	-	-	-	-	-	-	
SS (mg/L)	-	-	-	-	-	-	-	-	
Remarks									

Compliance with Action and Limit Level

Parameter	As in EM&A		C2*130%		IMO1		IMO2		IMO3		IMO4		IMO5		IMO6		MPB1		MPB2		MP	
	Action Level	Limit Level	Action Level	Limit Level	Exceedance of Action Level	Exceedance of Limit Level	Exceedance of Action Level	Exceedance of Limit Level	Exceedance of Action Level	Exceedance of Limit Level	Exceedance of Action Level	Exceedance of Limit Level	Exceedance of Action Level	Exceedance of Limit Level	Exceedance of Action Level	Exceedance of Limit Level	Exceedance of Action Level	Exceedance of Limit Level	Exceedance of Action Level	Exceedance of Limit Level	Exceedance of Action Level	Exceedance of Limit Level
DO (Bottom)	3.3	2.5	6.1	6.1	N	N	N	N	-	-	-	-	N	N	N	N	N	N	N	N	N	N
DO (Depth-averaged)	4.2	4.0	5.9	5.9	N	N	N	N	-	-	-	-	N	N	N	N	N	N	N	N	N	N
Turbidity (Depth-averaged)	29.0	49.0	4.7	4.7	N	N	N	N	-	-	-	-	N	N	N	N	N	N	N	N	N	N
SS (Depth-averaged)	24.0	37.0	19.3	19.3	N	N	N	N	-	-	-	-	N	N	N	N	N	N	N	N	N	N

Mid-Ebb

Station		IMO5						Co-ordinates	
Time (hh:mm)		4:19-4:21						Northing	Easting
Water Depth (m)		21.0						22.22.997	113.55.170
Monitoring Depth (m)		1.0		10.5		20.0		Depth-averaged	Bottom
Trial	Trial 1	Trial 2	Trial 1	Trial 2	Trial 1	Trial 2	Depth-averaged	Bottom	
Water Temperature (°C)	21.3	21.3	20.8	20.8	20.5	20.5	20.84	-	
Salinity (ppt)	34.5	34.5	34.6	34.6	34.6	34.7	34.59	-	
pH	8.2	8.2	8.2	8.2	8.2	8.2	8.20	-	
D.O. Saturation (%)	87.7	87.1	87.6	88.4	89.2	88.6	88.10	-	
D.O. (mg/L)	6.4	6.3	6.4	6.5	6.6	6.5	6.43	6.53	
Turbidity (NTU)	3.7	3.4	5.1	5.5	6.2	6.5	5.07	-	
SS (mg/L)	8	8	8	9	12	11	9.33	-	
Remarks	Derrick lighter CM38 (B21601V) and Dredger were in operation.								

Station		IMO6						Co-ordinates	
Time (hh:mm)		4:06-4:09						Northing	Easting
Water Depth (m)		18.0						22.21.714	113.55.641
Monitoring Depth (m)		1.0		9.0		17.0		Depth-averaged	Bottom
Trial	Trial 1	Trial 2	Trial 1	Trial 2	Trial 1	Trial 2	Depth-averaged	Bottom	
Water Temperature (°C)	21.6	21.6	20.9	20.8	20.4	20.4	20.95	-	
Salinity (ppt)	34.6	34.5	34.6	34.6	34.6	34.6	34.59	-	
pH	8.2	8.2	8.2	8.2	8.2	8.2	8.20	-	
D.O. Saturation (%)	93.3	93.1	93.9	93.9	94.1	94.6	93.82	-	
D.O. (mg/L)	6.7	6.7	6.9	6.9	6.9	7.0	6.84	6.95	
Turbidity (NTU)	3.0	2.9	4.9	4.8	5.6	5.3	4.42	-	
SS (mg/L)	11	10	11	12	11	14	11.50	-	
Remarks	Derrick lighter CM38 (B21601V) and Dredger were in operation.								

Station		MPB1						Co-ordinates	
Time (hh:mm)		5:24-5:27						Northing	Easting
Water Depth (m)		7.8							
Monitoring Depth (m)		1.0		3.9		6.8		Depth-averaged	Bottom
Trial	Trial 1	Trial 2	Trial 1	Trial 2	Trial 1	Trial 2	Depth-averaged	Bottom	
Water Temperature (°C)	20.8	20.8	20.8	20.8	20.7	20.7	20.76	-	
Salinity (ppt)	34.5	34.5	34.6	34.6	34.6	34.6	34.55	-	
pH	8.3	8.3	8.3	8.3	8.3	8.3	8.27	-	
D.O. Saturation (%)	75.8	76.0	76.6	76.1	77.3	75.9	76.28	-	
D.O. (mg/L)	5.5	5.6	5.6	5.6	5.7	5.7	5.60	5.66	
Turbidity (NTU)	3.3	3.4	4.1	4.0	5.5	5.7	4.33	-	
SS (mg/L)	8	9	8	9	10	11	9.17	-	
Remarks	Derrick lighter CM38 (B21601V) and Dredger were in operation.								

Station		MPB2						Co-ordinates	
Time (hh:mm)		5:36-5:38						Northing	Easting
Water Depth (m)		8.0							
Monitoring Depth (m)		1.0		4.0		7.0		Depth-averaged	Bottom
Trial	Trial 1	Trial 2	Trial 1	Trial 2	Trial 1	Trial 2	Depth-averaged	Bottom	
Water Temperature (°C)	20.9	20.9	20.8	20.8	20.8	20.8	20.82	-	
Salinity (ppt)	34.7	34.7	34.6	34.7	34.6	34.6	34.66	-	
pH	8.3	8.3	8.3	8.3	8.3	8.3	8.30	-	
D.O. Saturation (%)	72.7	73.0	74.9	74.4	75.3	75.9	74.37	-	
D.O. (mg/L)	5.4	5.3	5.5	5.4	5.5	5.6	5.45	5.53	
Turbidity (NTU)	3.0	3.2	4.2	4.1	5.4	5.2	4.18	-	
SS (mg/L)	8	9	11	10	10	9	9.50	-	
Remarks	Derrick lighter CM38 (B21601V) and Dredger were in operation.								

Station		MP						Co-ordinates	
Time (hh:mm)		5:13-5:15						Northing	Easting
Water Depth (m)		4.8							
Monitoring Depth (m)		1.0		2.4		3.8		Depth-averaged	Bottom
Trial	Trial 1	Trial 2	Trial 1	Trial 2	Trial 1	Trial 2	Depth-averaged	Bottom	
Water Temperature (°C)	20.9	20.9	20.9	20.9	20.9	20.9	20.88	-	
Salinity (ppt)	34.4	34.4	34.5	34.5	34.6	34.6	34.52	-	
pH	8.2	8.3	8.2	8.2	8.2	8.2	8.23	-	
D.O. Saturation (%)	79.2	78.5	78.8	80.3	79.3	81.2	79.55	-	
D.O. (mg/L)	5.8	5.8	5.8	5.9	5.9	5.9	5.84	5.90	
Turbidity (NTU)	3.4	3.3	3.6	3.7	4.1	3.9	3.67	-	
SS (mg/L)	11	11	10	10	9	10	10.17	-	
Remarks	Derrick lighter CM38 (B21601V) and Dredger were in operation.								

Sampling Date	11/23/09
Weather & Ambient Temperature	Fine, 20C

Mid-Flood

Station		C1 (NM3)						Co-ordinates	
Time (hh:mm)		16:58-16:59						Northing	
Water Depth (m)		7.3						Easting	
Monitoring Depth (m)		1.0		3.7		6.3		22.21.980 113.55.251	
Trial	Trial 1	Trial 2	Trial 1	Trial 2	Trial 1	Trial 2	Depth-averaged	Bottom	
Water Temperature (°C)	21.7	21.7	21.7	21.7	21.6	21.6	21.69	-	
Salinity (ppt)	34.6	34.6	34.6	34.7	34.6	34.6	34.37	-	
pH	8.2	8.2	8.2	8.2	8.2	8.2	8.21	-	
D.O. Saturation (%)	65.8	67.4	66.0	65.8	68.6	65.7	66.55	-	
D.O. (mg/L)	4.7	4.8	4.8	4.7	4.9	4.8	4.79	4.86	
Turbidity (NTU)	11.8	11.7	12.9	12.5	14.7	14.8	13.07	-	
SS (mg/L)	9	9	9	10	10	9	9.33	-	
Remarks	Derrick lighter CM38 (B21601V) and Dredger were in operation.								

Station		IMO5						Co-ordinates	
Time (hh:mm)		16:21-16:22						Northing	
Water Depth (m)		20.0						Easting	
Monitoring Depth (m)		1.0		10.0		19.0		22.21.980 113.55.251	
Trial	Trial 1	Trial 2	Trial 1	Trial 2	Trial 1	Trial 2	Depth-averaged	Bottom	
Water Temperature (°C)	21.2	21.3	20.9	20.9	20.8	20.9	20.99	-	
Salinity (ppt)	34.7	34.7	34.8	34.7	34.7	34.7	34.71	-	
pH	8.2	8.2	8.2	8.2	8.2	8.2	8.19	-	
D.O. Saturation (%)	57.3	57.2	57.7	57.3	58.2	58.1	57.63	-	
D.O. (mg/L)	4.2	4.1	4.2	4.2	4.3	4.2	4.19	4.25	
Turbidity (NTU)	15.1	14.7	15.9	15.7	16.7	16.6	15.78	-	
SS (mg/L)	10	12	13	12	16	13	12.67	-	
Remarks	Derrick lighter CM38 (B21601V) and Dredger were in operation.								

Station		C3 (NM6)						Co-ordinates	
Time (hh:mm)		15:14-15:15						Northing	
Water Depth (m)		7.3						Easting	
Monitoring Depth (m)		1.0		3.7		6.3		22.21.761 113.55.251	
Trial	Trial 1	Trial 2	Trial 1	Trial 2	Trial 1	Trial 2	Depth-averaged	Bottom	
Water Temperature (°C)	20.5	20.5	20.5	20.5	20.5	20.5	20.48	-	
Salinity (ppt)	34.7	34.3	34.7	34.2	34.7	34.6	34.52	-	
pH	8.1	8.1	8.1	8.1	8.1	8.1	8.12	-	
D.O. Saturation (%)	91.3	94.8	93.0	95.3	94.0	97.8	94.37	-	
D.O. (mg/L)	6.7	7.0	6.8	7.0	6.9	7.2	6.94	7.06	
Turbidity (NTU)	12.6	12.6	12.8	12.8	13.0	12.7	12.76	-	
SS (mg/L)	11	10	12	11	9	8	10.17	-	
Remarks	Derrick lighter CM38 (B21601V) and Dredger were in operation.								

Station		IMO6						Co-ordinates	
Time (hh:mm)		16:31-16:33						Northing	
Water Depth (m)		18.0						Easting	
Monitoring Depth (m)		1.0		9.0		17.0		22.21.761 113.55.251	
Trial	Trial 1	Trial 2	Trial 1	Trial 2	Trial 1	Trial 2	Depth-averaged	Bottom	
Water Temperature (°C)	21.5	21.5	21.1	21.2	20.9	20.9	21.17	-	
Salinity (ppt)	34.7	34.7	34.8	34.8	34.7	34.7	34.51	-	
pH	8.2	8.2	8.2	8.2	8.2	8.2	8.22	-	
D.O. Saturation (%)	61.4	62.6	64.4	62.1	74.8	64.57	64.57	-	
D.O. (mg/L)	4.4	4.5	4.7	4.5	4.5	5.5	4.69	5.00	
Turbidity (NTU)	12.6	13.0	13.6	13.9	14.4	14.6	13.68	-	
SS (mg/L)	9	8	10	12	16	16	11.83	-	
Remarks	Derrick lighter CM38 (B21601V) and Dredger were in operation.								

Station		IMO1						Co-ordinates	
Time (hh:mm)		15:59-16:01						Northing	
Water Depth (m)		10.3						Easting	
Monitoring Depth (m)		1.0		5.2		9.3		22.21.377 113.54.330	
Trial	Trial 1	Trial 2	Trial 1	Trial 2	Trial 1	Trial 2	Depth-averaged	Bottom	
Water Temperature (°C)	21.1	21.2	20.9	21.1	20.8	21.0	21.04	-	
Salinity (ppt)	34.7	34.3	34.9	34.7	34.6	34.7	34.63	-	
pH	8.2	8.2	8.2	8.2	8.2	8.2	8.19	-	
D.O. Saturation (%)	69.4	71.2	70.6	70.7	74.7	71.8	71.40	-	
D.O. (mg/L)	5.0	5.2	5.1	5.1	5.5	5.2	5.20	5.34	
Turbidity (NTU)	13.8	13.5	13.2	13.8	13.7	13.8	13.63	-	
SS (mg/L)	15	12	14	15	13	13	13.67	-	
Remarks	Derrick lighter CM38 (B21601V) and Dredger were in operation.								

Station		MPB1						Co-ordinates	
Time (hh:mm)		15:38-15:39						Northing	
Water Depth (m)		8.6						Easting	
Monitoring Depth (m)		1.0		4.3		7.6		22.21.153 113.54.885	
Trial	Trial 1	Trial 2	Trial 1	Trial 2	Trial 1	Trial 2	Depth-averaged	Bottom	
Water Temperature (°C)	21.2	21.2	21.0	20.9	21.0	20.9	21.03	-	
Salinity (ppt)	34.6	34.6	34.7	34.6	34.5	34.6	34.58	-	
pH	8.2	8.2	8.2	8.2	8.2	8.2	8.18	-	
D.O. Saturation (%)	94.3	95.1	100.6	92.9	93.2	107.9	97.33	-	
D.O. (mg/L)	6.8	6.9	7.3	6.8	6.8	7.9	7.08	7.33	
Turbidity (NTU)	13.8	13.9	17.4	17.0	18.4	18.7	16.53	-	
SS (mg/L)	10	9	11	9	13	14	11.00	-	
Remarks	Derrick lighter CM38 (B21601V) and Dredger were in operation.								

Station		IMO2						Co-ordinates	
Time (hh:mm)		16:08-16:09						Northing	
Water Depth (m)		12.9						Easting	
Monitoring Depth (m)		1.0		6.5		11.9		22.21.153 113.54.885	
Trial	Trial 1	Trial 2	Trial 1	Trial 2	Trial 1	Trial 2	Depth-averaged	Bottom	
Water Temperature (°C)	21.2	21.2	21.0	21.0	20.9	21.0	21.04	-	
Salinity (ppt)	34.6	32.8	34.8	34.9	34.6	34.6	34.30	-	
pH	8.2	8.2	8.2	8.2	8.2	8.2	8.20	-	
D.O. Saturation (%)	61.7	61.8	62.0	61.9	62.8	62.9	62.18	-	
D.O. (mg/L)	4.5	4.5	4.5	4.5	4.6	4.6	4.53	4.58	
Turbidity (NTU)	13.5	13.4	14.1	15.0	15.6	15.0	14.43	-	
SS (mg/L)	9	7	11	10	12	13	10.33	-	
Remarks	Derrick lighter CM38 (B21601V) and Dredger were in operation.								

Station		MPB2						Co-ordinates	
Time (hh:mm)		15:29-15:30						Northing	
Water Depth (m)		9.0						Easting	
Monitoring Depth (m)		1.0		4.5		8.0		22.21.153 113.54.885	
Trial	Trial 1	Trial 2	Trial 1	Trial 2	Trial 1	Trial 2	Depth-averaged	Bottom	
Water Temperature (°C)	21.1	21.1	20.9	21.0	21.0	21.0	21.01	-	
Salinity (ppt)	34.7	34.6	34.7	34.6	34.3	34.6	34.57	-	
pH	8.2	8.2	8.2	8.2	8.2	8.2	8.16	-	
D.O. Saturation (%)	94.3	102.0	95.8	105.8	113.1	100.7	101.95	-	
D.O. (mg/L)	6.9	7.4	7.0	7.7	8.3	7.3	7.42	7.80	
Turbidity (NTU)	14.1	14.1	15.0	15.6	16.5	16.6	15.32	-	
SS (mg/L)	10	10	9	11	13	15	11.33	-	
Remarks	Derrick lighter CM38 (B21601V) and Dredger were in operation.								

Station		IMO3						Co-ordinates	
Time (hh:mm)		-						Northing	
Water Depth (m)		-						Easting	
Monitoring Depth (m)		-		-		-		-	
Trial	Trial 1	Trial 2	Trial 1	Trial 2	Trial 1	Trial 2	Depth-averaged	Bottom	
Water Temperature (°C)	-	-	-	-	-	-	-	-	
Salinity (ppt)	-	-	-	-	-	-	-	-	
pH	-	-	-	-	-	-	-	-	
D.O. Saturation (%)	-	-	-	-	-	-	-	-	
D.O. (mg/L)	-	-	-	-	-	-	-	-	
Turbidity (NTU)	-	-	-	-	-	-	-	-	
SS (mg/L)	-	-	-	-	-	-	-	-	
Remarks									

Station		MP						Co-ordinates	
Time (hh:mm)		15:47-15:48						Northing	
Water Depth (m)		5.9						Easting	
Monitoring Depth (m)		1.0		3.0		4.9		22.21.153 113.54.885	
Trial	Trial 1	Trial 2	Trial 1	Trial 2	Trial 1	Trial 2	Depth-averaged	Bottom	
Water Temperature (°C)	21.0	21.0	21.0	21.0	20.8	20.8	20.94	-	
Salinity (ppt)	34.6	34.6	34.6	34.6	34.5	34.6	34.57	-	
pH	8.2	8.2	8.2	8.2	8.2	8.2	8.18	-	
D.O. Saturation (%)	91.0	92.8	95.2	89.7	95.1	86.7	91.75	-	
D.O. (mg/L)	6.6	6.8	6.9	6.5	6.9	6.3	6.68	6.62	
Turbidity (NTU)	16.7	17.1	16.9	16.8	16.7	16.8	16.83	-	
SS (mg/L)	12	12	13	13	16	18	14.00	-	
Remarks	Derrick lighter CM38 (B21601V) and Dredger were in operation.								

Station		IMO4						Co-ordinates	
Time (hh:mm)		-						Northing	
Water Depth (m)		-						Easting	
Monitoring Depth (m)		-		-		-		-	
Trial	Trial 1	Trial 2	Trial 1	Trial 2	Trial 1	Trial 2	Depth-averaged	Bottom	
Water Temperature (°C)	-	-	-	-	-	-	-	-	
Salinity (ppt)	-	-	-	-	-	-	-	-	
pH	-	-	-	-	-	-	-	-	
D.O. Saturation (%)	-	-	-	-	-	-	-	-	
D.O. (mg/L)	-	-	-	-	-	-	-	-	
Turbidity (NTU)	-	-	-	-	-	-	-	-	
SS (mg/L)	-	-	-	-	-	-	-	-	
Remarks									

Compliance with Action and Limit Level

Parameter	As in EM&A		Mean (C1+C3)*130%		IMO1		IMO2		IMO3		IMO4		IMO5		IMO6		MPB1		MPB2		MP		
	Action Level	Limit Level	Action Level	Limit Level	Exceedance of Action Level	Exceedance of Limit Level	Exceedance of Action Level	Exceedance of Limit Level	Exceedance of Action Level	Exceedance of Limit Level	Exceedance of Action Level	Exceedance of Limit Level	Exceedance of Action Level	Exceedance of Limit Level	Exceedance of Action Level	Exceedance of Limit Level	Exceedance of Action Level	Exceedance of Limit Level	Exceedance of Action Level	Exceedance of Limit Level	Exceedance of Action Level	Exceedance of Limit Level	
DO (Bottom)	3.3	2.5	6.0	6.0	N	N	N	N	-	-	-	-	N	N	N	N	N	N	N	N	N	N	N
DO (Depth-averaged)	4.2	4.0	5.9	5.9	N	N	N	N	-	-	-</												

Sampling Date	11/24/2009
Weather & Ambient Temperature	Cloudy, 17C

Station	C2 (NM5)							Co-ordinates	
Time (hh:mm)	5:41-5:42							Northing	Easting
Water Depth (m)	20.2							22.22.112	113.55.179
Monitoring Depth (m)	1.0		10.1		19.2				
Trial	Trial 1	Trial 2	Trial 1	Trial 2	Trial 1	Trial 2	Depth-averaged	Bottom	
Water Temperature (°C)	22.4	22.3	22.3	22.3	22.3	22.3	22.34	-	
Salinity (ppt)	34.5	34.4	34.4	34.5	34.4	34.3	34.41	-	
pH	8.0	8.0	8.0	8.0	8.0	7.9	7.98	-	
D.O. Saturation (%)	98.0	101.4	103.9	98.6	100.0	108.9	101.80	-	
D.O. (mg/L)	6.9	7.2	7.4	7.0	7.1	7.7	7.22	7.41	
Turbidity (NTU)	7.4	8.4	12.7	10.7	11.3	11.9	10.40	-	
SS (mg/L)	12	13	12	14	9	10	11.67	-	
Remarks	Dredger was in operation.								

Station	IMO1							Co-ordinates	
Time (hh:mm)								Northing	Easting
Water Depth (m)									
Monitoring Depth (m)									
Trial	Trial 1	Trial 2	Trial 1	Trial 2	Trial 1	Trial 2	Depth-averaged	Bottom	
Water Temperature (°C)	-	-	-	-	-	-	-	-	
Salinity (ppt)	-	-	-	-	-	-	-	-	
pH	-	-	-	-	-	-	-	-	
D.O. Saturation (%)	-	-	-	-	-	-	-	-	
D.O. (mg/L)	-	-	-	-	-	-	-	-	
Turbidity (NTU)	-	-	-	-	-	-	-	-	
SS (mg/L)	-	-	-	-	-	-	-	-	
Remarks									

Station	IMO2							Co-ordinates	
Time (hh:mm)								Northing	Easting
Water Depth (m)									
Monitoring Depth (m)									
Trial	Trial 1	Trial 2	Trial 1	Trial 2	Trial 1	Trial 2	Depth-averaged	Bottom	
Water Temperature (°C)	-	-	-	-	-	-	-	-	
Salinity (ppt)	-	-	-	-	-	-	-	-	
pH	-	-	-	-	-	-	-	-	
D.O. Saturation (%)	-	-	-	-	-	-	-	-	
D.O. (mg/L)	-	-	-	-	-	-	-	-	
Turbidity (NTU)	-	-	-	-	-	-	-	-	
SS (mg/L)	-	-	-	-	-	-	-	-	
Remarks									

Station	IMO3							Co-ordinates	
Time (hh:mm)								Northing	Easting
Water Depth (m)									
Monitoring Depth (m)									
Trial	Trial 1	Trial 2	Trial 1	Trial 2	Trial 1	Trial 2	Depth-averaged	Bottom	
Water Temperature (°C)	-	-	-	-	-	-	-	-	
Salinity (ppt)	-	-	-	-	-	-	-	-	
pH	-	-	-	-	-	-	-	-	
D.O. Saturation (%)	-	-	-	-	-	-	-	-	
D.O. (mg/L)	-	-	-	-	-	-	-	-	
Turbidity (NTU)	-	-	-	-	-	-	-	-	
SS (mg/L)	-	-	-	-	-	-	-	-	
Remarks									

Station	IMO4							Co-ordinates	
Time (hh:mm)								Northing	Easting
Water Depth (m)									
Monitoring Depth (m)									
Trial	Trial 1	Trial 2	Trial 1	Trial 2	Trial 1	Trial 2	Depth-averaged	Bottom	
Water Temperature (°C)	-	-	-	-	-	-	-	-	
Salinity (ppt)	-	-	-	-	-	-	-	-	
pH	-	-	-	-	-	-	-	-	
D.O. Saturation (%)	-	-	-	-	-	-	-	-	
D.O. (mg/L)	-	-	-	-	-	-	-	-	
Turbidity (NTU)	-	-	-	-	-	-	-	-	
SS (mg/L)	-	-	-	-	-	-	-	-	
Remarks									

Compliance with Action and Limit Level

Parameter	As in EM&A		C2*130%		IMO1		IMO2		IMO3		IMO4		IMO5		IMO6		MPB1		MPB2		MP	
	Action Level	Limit Level	Action Level	Limit Level	Exceedance of Action Level	Exceedance of Limit Level	Exceedance of Action Level	Exceedance of Limit Level	Exceedance of Action Level	Exceedance of Limit Level	Exceedance of Action Level	Exceedance of Limit Level	Exceedance of Action Level	Exceedance of Limit Level	Exceedance of Action Level	Exceedance of Limit Level	Exceedance of Action Level	Exceedance of Limit Level	Exceedance of Action Level	Exceedance of Limit Level	Exceedance of Action Level	Exceedance of Limit Level
DO (Bottom)	3.3	2.5	7.4	7.4	-	-	-	-	-	-	-	-	-	-	-	-	-	-	-	-	-	-
DO (Depth-averaged)	4.2	4.0	7.2	7.2	-	-	-	-	-	-	-	-	-	-	-	-	-	-	-	-	-	-
Turbidity (Depth-averaged)	29.0	49.0	13.5	13.5	-	-	-	-	-	-	-	-	-	-	-	-	-	-	-	-	-	-
SS (Depth-averaged)	24.0	37.0	15.2	15.2	-	-	-	-	-	-	-	-	-	-	-	-	-	-	-	-	-	-

Mid-Ebb

Station	IMO5							Co-ordinates	
Time (hh:mm)	6:20-6:22							Northing	Easting
Water Depth (m)	18.9							22.22.112	113.55.179
Monitoring Depth (m)	1.0		9.5		17.9				
Trial	Trial 1	Trial 2	Trial 1	Trial 2	Trial 1	Trial 2	Depth-averaged	Bottom	
Water Temperature (°C)	22.2	22.2	22.2	22.3	22.3	22.3	22.23	-	
Salinity (ppt)	34.4	34.4	34.3	33.0	34.5	34.5	34.17	-	
pH	8.1	8.1	8.1	8.1	8.1	8.1	8.07	-	
D.O. Saturation (%)	76.0	75.9	76.0	75.9	76.0	76.1	75.98	-	
D.O. (mg/L)	5.4	5.4	5.4	5.5	5.4	5.4	5.42	5.42	
Turbidity (NTU)	7.2	6.6	14.0	13.5	16.0	15.8	12.18	-	
SS (mg/L)	12	10	10	8	12	10	10.33	-	
Remarks	Dredger was in operation.								

Station	IMO6							Co-ordinates	
Time (hh:mm)	6:34-6:35							Northing	Easting
Water Depth (m)	16.5							22.21.811	113.55.679
Monitoring Depth (m)	1.0		8.3		15.5				
Trial	Trial 1	Trial 2	Trial 1	Trial 2	Trial 1	Trial 2	Depth-averaged	Bottom	
Water Temperature (°C)	22.2	22.2	22.2	22.3	22.3	22.3	22.24	-	
Salinity (ppt)	34.4	34.4	34.0	34.3	34.4	34.5	34.31	-	
pH	8.1	8.1	8.1	8.1	8.1	8.1	8.07	-	
D.O. Saturation (%)	80.3	79.9	80.0	80.3	80.4	80.0	80.15	-	
D.O. (mg/L)	5.7	5.7	5.7	5.7	5.7	5.7	5.71	5.71	
Turbidity (NTU)	13.5	12.5	15.8	16.5	17.0	16.5	15.30	-	
SS (mg/L)	8	10	12	11	10	11	10.33	-	
Remarks	Dredger was in operation.								

Station	MPB1							Co-ordinates	
Time (hh:mm)	5:14-5:15							Northing	Easting
Water Depth (m)	7.8								
Monitoring Depth (m)	1.0		3.9		6.8				
Trial	Trial 1	Trial 2	Trial 1	Trial 2	Trial 1	Trial 2	Depth-averaged	Bottom	
Water Temperature (°C)	20.6	20.5	20.5	20.5	20.5	20.5	20.55	-	
Salinity (ppt)	34.1	34.1	34.0	30.5	34.1	34.1	33.49	-	
pH	8.1	8.1	8.1	8.1	8.1	8.1	8.09	-	
D.O. Saturation (%)	77.3	77.6	77.9	77.7	77.8	77.6	77.65	-	
D.O. (mg/L)	5.7	5.7	5.7	5.8	5.7	5.7	5.73	5.72	
Turbidity (NTU)	12.3	12.8	11.8	11.4	11.3	10.5	11.68	-	
SS (mg/L)	12	10	11	9	12	11	10.83	-	
Remarks	Dredger was in operation.								

Station	MPB2							Co-ordinates	
Time (hh:mm)	5:03-5:04							Northing	Easting
Water Depth (m)	8.3								
Monitoring Depth (m)	1.0		4.2		7.3				
Trial	Trial 1	Trial 2	Trial 1	Trial 2	Trial 1	Trial 2	Depth-averaged	Bottom	
Water Temperature (°C)	20.6	20.5	20.5	20.5	20.5	20.5	20.53	-	
Salinity (ppt)	33.0	34.1	34.1	32.2	34.1	34.1	33.60	-	
pH	8.1	8.1	8.1	8.1	8.1	8.1	8.09	-	
D.O. Saturation (%)	78.0	78.3	78.7	78.0	78.2	78.8	78.33	-	
D.O. (mg/L)	5.8	5.8	5.8	5.8	5.8	5.8	5.78	5.78	
Turbidity (NTU)	17.8	17.8	17.5	17.8	20.2	21.0	18.68	-	
SS (mg/L)	9	8	11	9	11	10	9.67	-	
Remarks	Dredger was in operation.								

Station	MP							Co-ordinates	
Time (hh:mm)	5:23-5:25							Northing	Easting
Water Depth (m)	4.9								
Monitoring Depth (m)	1.0		2.4		3.9				
Trial	Trial 1	Trial 2	Trial 1	Trial 2	Trial 1	Trial 2	Depth-averaged	Bottom	
Water Temperature (°C)	20.9	20.9	20.8	20.9	20.9	20.8	20.86	-	
Salinity (ppt)	33.8	33.7	33.7	33.6	33.7	33.7	33.69	-	
pH	7.9	7.9	7.9	7.9	7.9	7.9	7.93	-	
D.O. Saturation (%)	77.2	77.5	78.2	78.2	77.4	78.2	77.78	-	
D.O. (mg/L)	5.7	5.7	5.7	5.7	5.7	5.7	5.71	5.71	
Turbidity (NTU)	8.9	9.3	9.7	9.7	9.0	9.7	9.38	-	
SS (mg/L)	9	10	12	13	10	12	11.00	-	
Remarks	Dredger was in operation.								

Sampling Date	11/27/2009
Weather & Ambient Temperature	Sunny, 25C

Mid-Flood

Station		C1 (NM3)						Co-ordinates	
Time (hh:mm)		15:14-15:16						Northing Easting	
Water Depth (m)		16.8						22.22.412 113.54.937	
Monitoring Depth (m)		1.0		8.4		15.8			
Trial	Trial 1	Trial 2	Trial 1	Trial 2	Trial 1	Trial 2	Depth-averaged	Bottom	
Water Temperature (°C)	22.1	22.1	21.7	21.7	21.7	21.7	21.84	-	-
Salinity (ppt)	34.3	34.3	34.4	34.4	34.5	34.4	34.37	-	-
pH	7.9	7.8	7.9	7.9	7.9	7.9	7.86	-	-
D.O. Saturation (%)	76.1	75.6	76.6	77.5	78.7	79.5	77.33	-	-
D.O. (mg/L)	5.5	5.4	5.5	5.6	5.7	5.7	5.56	5.70	-
Turbidity (NTU)	2.7	2.5	3.3	3.1	3.6	3.7	3.15	-	-
SS (mg/L)	7.0	8.0	7.0	6.0	7.0	7.0	7.00	-	-
Remarks	Derrick lighter CM38 (B21601V) and Dredger were in operation.								

Station		IM05						Co-ordinates	
Time (hh:mm)		14:38-14:41						Northing Easting	
Water Depth (m)		21.0						22.22.412 113.54.937	
Monitoring Depth (m)		1.0		10.5		20.0			
Trial	Trial 1	Trial 2	Trial 1	Trial 2	Trial 1	Trial 2	Depth-averaged	Bottom	
Water Temperature (°C)	22.8	22.8	21.8	21.8	21.7	21.7	22.39	-	-
Salinity (ppt)	33.9	34.0	34.4	34.4	34.5	34.5	34.25	-	-
pH	8.1	8.1	8.1	8.1	8.1	8.1	8.09	-	-
D.O. Saturation (%)	86.5	87.4	80.5	80.8	82.6	82.5	83.38	-	-
D.O. (mg/L)	6.1	6.2	5.8	5.8	5.9	5.9	5.97	5.94	-
Turbidity (NTU)	4.4	4.5	5.7	5.9	6.7	6.4	5.60	-	-
SS (mg/L)	10.0	8.0	9.0	10.0	15.0	10.0	10.33	-	-
Remarks	Derrick lighter CM38 (B21601V) and Dredger were in operation.								

Station		C3 (NM6)						Co-ordinates	
Time (hh:mm)		13:23-13:25						Northing Easting	
Water Depth (m)		6.6						22.21.562 113.55.890	
Monitoring Depth (m)		1.0		3.3		5.6			
Trial	Trial 1	Trial 2	Trial 1	Trial 2	Trial 1	Trial 2	Depth-averaged	Bottom	
Water Temperature (°C)	22.2	22.2	21.6	21.6	21.6	21.6	21.78	-	-
Salinity (ppt)	33.8	33.8	34.1	34.2	34.2	34.2	34.07	-	-
pH	8.2	8.2	8.2	8.2	8.2	8.2	8.23	-	-
D.O. Saturation (%)	90.1	89.5	87.8	88.3	88.9	89.5	89.02	-	-
D.O. (mg/L)	6.5	6.4	6.4	6.4	6.4	6.5	6.42	6.46	-
Turbidity (NTU)	3.5	3.5	4.2	4.1	3.9	4.0	3.87	-	-
SS (mg/L)	14.0	8.0	8.0	9.0	7.0	6.0	8.67	-	-
Remarks	Derrick lighter CM38 (B21601V) and Dredger were in operation.								

Station		IM06						Co-ordinates	
Time (hh:mm)		15:02-15:05						Northing Easting	
Water Depth (m)		18.4						22.21.562 113.55.890	
Monitoring Depth (m)		1.0		9.2		17.4			
Trial	Trial 1	Trial 2	Trial 1	Trial 2	Trial 1	Trial 2	Depth-averaged	Bottom	
Water Temperature (°C)	22.8	22.7	21.8	21.8	21.8	21.8	22.11	-	-
Salinity (ppt)	34.3	34.3	34.5	34.4	34.5	34.5	34.39	-	-
pH	8.1	8.1	8.1	8.1	8.1	8.1	8.06	-	-
D.O. Saturation (%)	82.3	82.2	79.6	79.7	80.4	80.7	80.82	-	-
D.O. (mg/L)	5.8	5.8	5.7	5.7	5.8	5.8	5.79	5.80	-
Turbidity (NTU)	3.8	3.9	4.5	4.7	5.6	5.4	4.65	-	-
SS (mg/L)	9.0	8.0	8.0	8.0	7.0	8.0	7.50	-	-
Remarks	Derrick lighter CM38 (B21601V) and Dredger were in operation.								

Station		IM01						Co-ordinates	
Time (hh:mm)		14:28-14:31						Northing Easting	
Water Depth (m)		21.6						22.22.406 113.54.874	
Monitoring Depth (m)		1.0		10.8		20.6			
Trial	Trial 1	Trial 2	Trial 1	Trial 2	Trial 1	Trial 2	Depth-averaged	Bottom	
Water Temperature (°C)	22.3	22.3	21.7	21.6	21.5	21.5	21.97	-	-
Salinity (ppt)	34.2	34.2	34.3	34.3	34.5	34.5	34.34	-	-
pH	8.1	8.1	8.1	8.1	8.1	8.1	8.12	-	-
D.O. Saturation (%)	82.7	82.5	79.6	78.8	80.4	80.2	80.70	-	-
D.O. (mg/L)	5.9	5.8	5.7	5.7	5.9	5.8	5.80	5.82	-
Turbidity (NTU)	3.7	3.5	5.2	4.9	5.8	6.1	4.87	-	-
SS (mg/L)	10.0	10.0	11.0	11.0	10.0	12.0	10.67	-	-
Remarks	Derrick lighter CM38 (B21601V) and Dredger were in operation.								

Station		MPB1						Co-ordinates	
Time (hh:mm)		13:51-13:53						Northing Easting	
Water Depth (m)		8.0						22.21.497 113.55.680	
Monitoring Depth (m)		1.0		4.0		7.0			
Trial	Trial 1	Trial 2	Trial 1	Trial 2	Trial 1	Trial 2	Depth-averaged	Bottom	
Water Temperature (°C)	22.0	22.0	21.6	21.6	21.5	21.5	21.70	-	-
Salinity (ppt)	32.3	32.2	33.5	33.5	33.6	33.6	33.12	-	-
pH	8.3	8.3	8.3	8.2	8.2	8.2	8.24	-	-
D.O. Saturation (%)	96.5	96.6	88.3	87.6	90.7	91.6	91.88	-	-
D.O. (mg/L)	7.0	7.0	6.4	6.4	6.6	6.7	6.68	6.64	-
Turbidity (NTU)	4.5	4.2	4.8	5.0	5.7	5.5	4.95	-	-
SS (mg/L)	14.0	13.0	13.0	13.0	11.0	11.0	11.83	-	-
Remarks	Derrick lighter CM38 (B21601V) and Dredger were in operation.								

Station		IM02						Co-ordinates	
Time (hh:mm)		14:51-14:54						Northing Easting	
Water Depth (m)		20.4						22.21.497 113.55.680	
Monitoring Depth (m)		1.0		10.2		19.4			
Trial	Trial 1	Trial 2	Trial 1	Trial 2	Trial 1	Trial 2	Depth-averaged	Bottom	
Water Temperature (°C)	22.3	22.3	21.7	21.6	21.6	21.6	21.84	-	-
Salinity (ppt)	34.2	34.2	34.4	34.4	34.5	34.5	34.37	-	-
pH	8.1	8.1	8.1	8.1	8.1	8.1	8.11	-	-
D.O. Saturation (%)	83.1	82.8	81.3	81.7	82.5	83.4	82.47	-	-
D.O. (mg/L)	5.9	5.9	5.9	5.9	6.0	6.0	5.93	5.98	-
Turbidity (NTU)	4.5	4.3	5.4	5.2	5.9	5.7	5.17	-	-
SS (mg/L)	10.0	10.0	14.0	10.0	11.0	10.0	10.83	-	-
Remarks	Derrick lighter CM38 (B21601V) and Dredger were in operation.								

Station		MPB2						Co-ordinates	
Time (hh:mm)		13:39-13:41						Northing Easting	
Water Depth (m)		8.2						22.21.497 113.55.680	
Monitoring Depth (m)		1.0		4.1		7.2			
Trial	Trial 1	Trial 2	Trial 1	Trial 2	Trial 1	Trial 2	Depth-averaged	Bottom	
Water Temperature (°C)	21.9	21.8	21.4	21.4	21.4	21.4	21.56	-	-
Salinity (ppt)	32.8	32.6	33.6	33.6	34.2	34.2	33.56	-	-
pH	8.2	8.2	8.2	8.2	8.2	8.2	8.20	-	-
D.O. Saturation (%)	87.4	87.7	84.5	84.7	86.9	86.4	86.27	-	-
D.O. (mg/L)	6.3	6.4	6.1	6.2	6.3	6.3	6.26	6.29	-
Turbidity (NTU)	3.7	3.6	4.6	4.8	5.4	5.1	4.53	-	-
SS (mg/L)	8.0	7.0	10.0	6.0	7.0	7.0	7.50	-	-
Remarks	Derrick lighter CM38 (B21601V) and Dredger were in operation.								

Station		IM03						Co-ordinates	
Time (hh:mm)		-						Northing Easting	
Water Depth (m)		-						-	
Monitoring Depth (m)		-		-		-			
Trial	Trial 1	Trial 2	Trial 1	Trial 2	Trial 1	Trial 2	Depth-averaged	Bottom	
Water Temperature (°C)	-	-	-	-	-	-	-	-	-
Salinity (ppt)	-	-	-	-	-	-	-	-	-
pH	-	-	-	-	-	-	-	-	-
D.O. Saturation (%)	-	-	-	-	-	-	-	-	-
D.O. (mg/L)	-	-	-	-	-	-	-	-	-
Turbidity (NTU)	-	-	-	-	-	-	-	-	-
SS (mg/L)	-	-	-	-	-	-	-	-	-
Remarks									

Station		MP						Co-ordinates	
Time (hh:mm)		14:02-14:04						Northing Easting	
Water Depth (m)		5.0						-	
Monitoring Depth (m)		1.0		2.5		4.0			
Trial	Trial 1	Trial 2	Trial 1	Trial 2	Trial 1	Trial 2	Depth-averaged	Bottom	
Water Temperature (°C)	21.6	21.6	21.5	21.5	21.5	21.5	21.52	-	-
Salinity (ppt)	32.3	32.3	32.8	32.8	33.4	33.4	32.81	-	-
pH	8.2	8.2	8.2	8.2	8.2	8.2	8.21	-	-
D.O. Saturation (%)	90.0	89.0	86.5	86.0	89.0	89.3	88.30	-	-
D.O. (mg/L)	6.6	6.5	6.3	6.3	6.5	6.5	6.45	6.50	-
Turbidity (NTU)	4.7	4.8	5.7	5.5	6.3	6.5	5.58	-	-
SS (mg/L)	6.0	8.0	12.0	8.0	12.0	12.0	9.67	-	-
Remarks	Derrick lighter CM38 (B21601V) and Dredger were in operation.								

Station		IM04						Co-ordinates	
Time (hh:mm)		-						Northing Easting	
Water Depth (m)		-						-	
Monitoring Depth (m)		-		-		-			
Trial	Trial 1	Trial 2	Trial 1	Trial 2	Trial 1	Trial 2	Depth-averaged	Bottom	
Water Temperature (°C)	-	-	-	-	-	-	-	-	-
Salinity (ppt)	-	-	-	-	-	-	-	-	-
pH	-	-	-	-	-	-	-	-	-
D.O. Saturation (%)	-	-	-	-	-	-	-	-	-
D.O. (mg/L)	-	-	-	-	-	-	-	-	-
Turbidity (NTU)	-	-	-	-	-	-	-	-	-
SS (mg/L)	-	-	-	-	-	-	-	-	-
Remarks									

Compliance with Action and Limit Level

Parameter	As in EM&A		Mean (C1+C3)*130%		IM01		IM02		IM03		IM04		IM05		IM06		MPB1		MPB2		MP		
	Action Level	Limit Level	Action Level	Limit Level	Exceedance of Action Level	Exceedance of Limit Level	Exceedance of Action Level	Exceedance of Limit Level	Exceedance of Action Level	Exceedance of Limit Level	Exceedance of Action Level	Exceedance of Limit Level	Exceedance of Action Level	Exceedance of Limit Level	Exceedance of Action Level	Exceedance of Limit Level	Exceedance of Action Level	Exceedance of Limit Level	Exceedance of Action Level	Exceedance of Limit Level	Exceedance of Action Level	Exceedance of Limit Level	
DO (Bottom)	3.3	2.5	6.1	6.1	N	N	N	N	-	-	-	-	N	N	N	N	N	N	N	N	N	N	N
DO (Depth-averaged)	4.2	4.0	6.0	6.0	N	N	N	N	-	-	-												

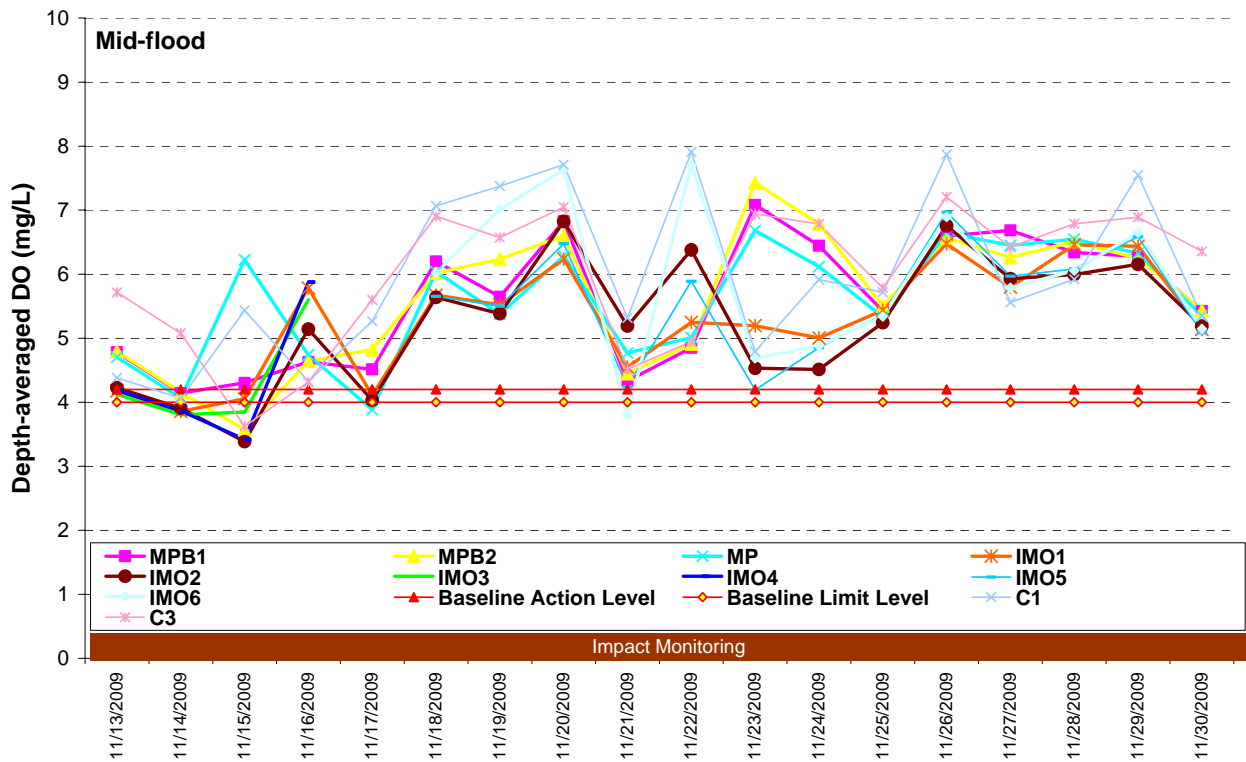
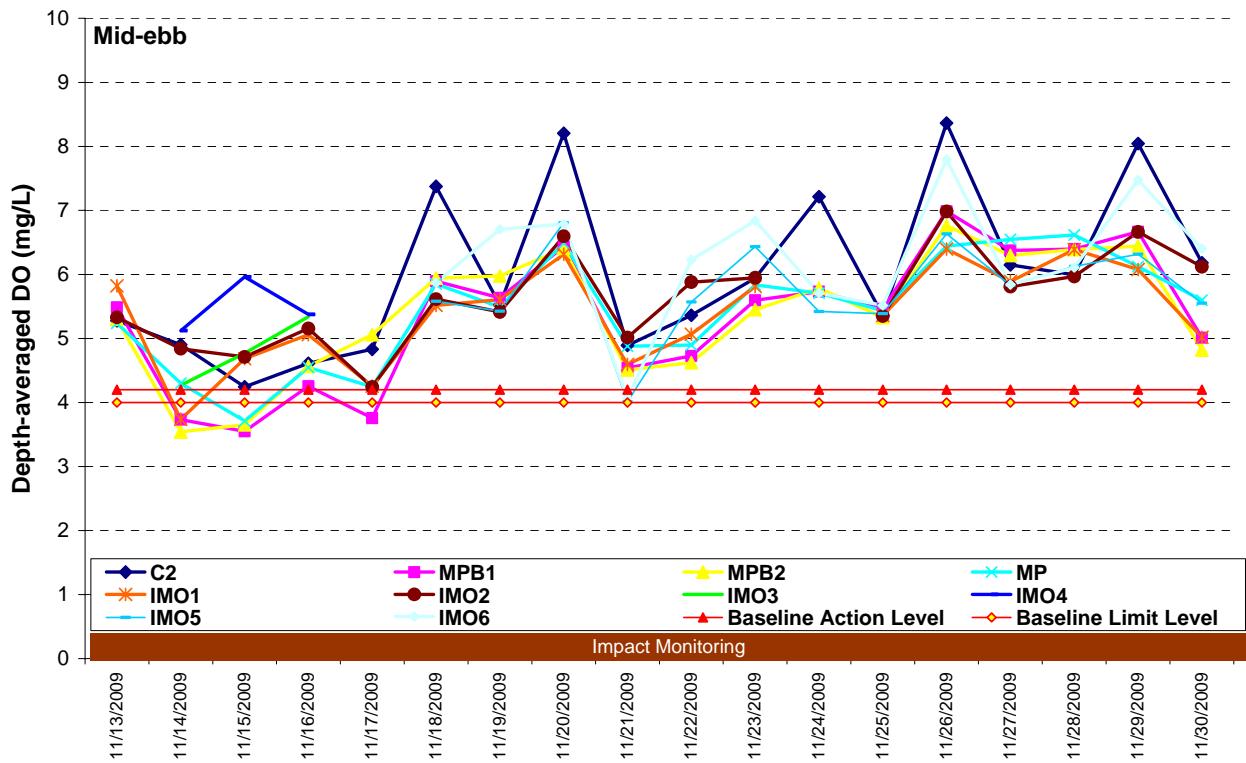


Figure G1 Dissolved oxygen concentration (depth-averaged) (mg/L) of water samples at mid-ebb and mid-flood between 13 and 30 November 2009

Ref: 0018105_Annex G_water graphs.doc



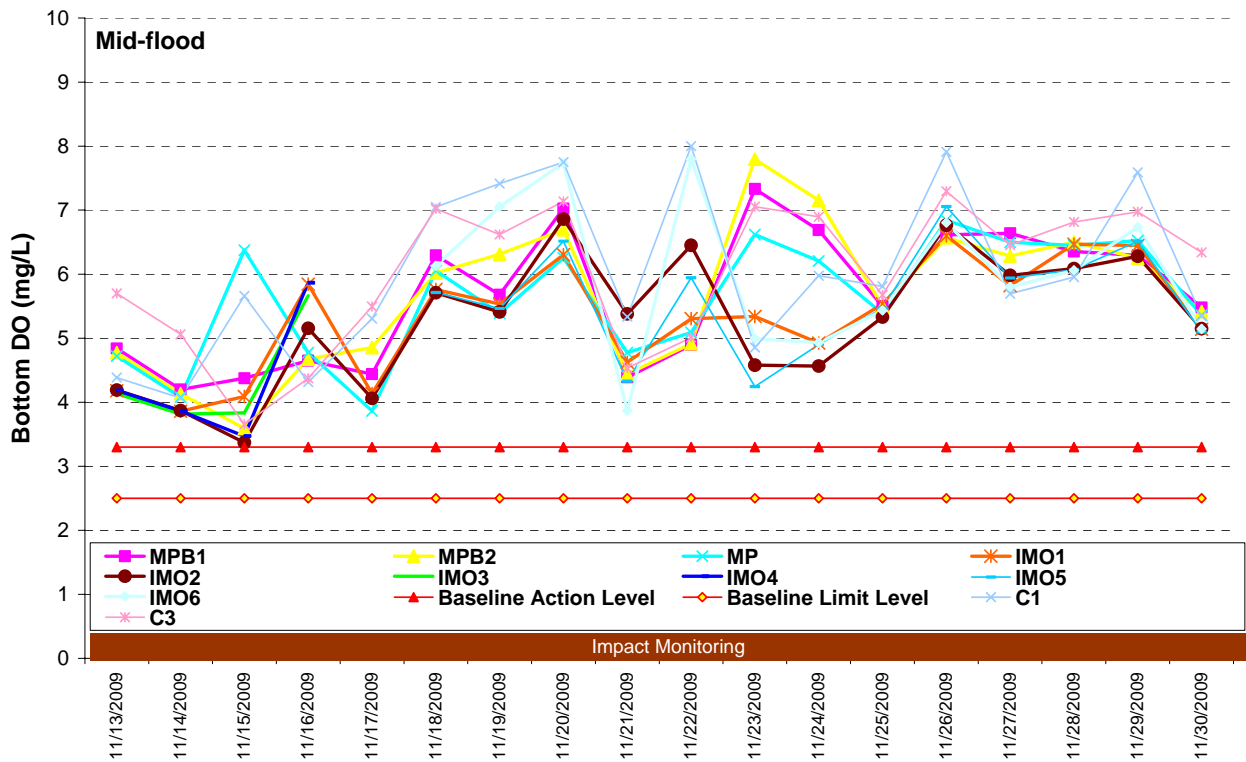
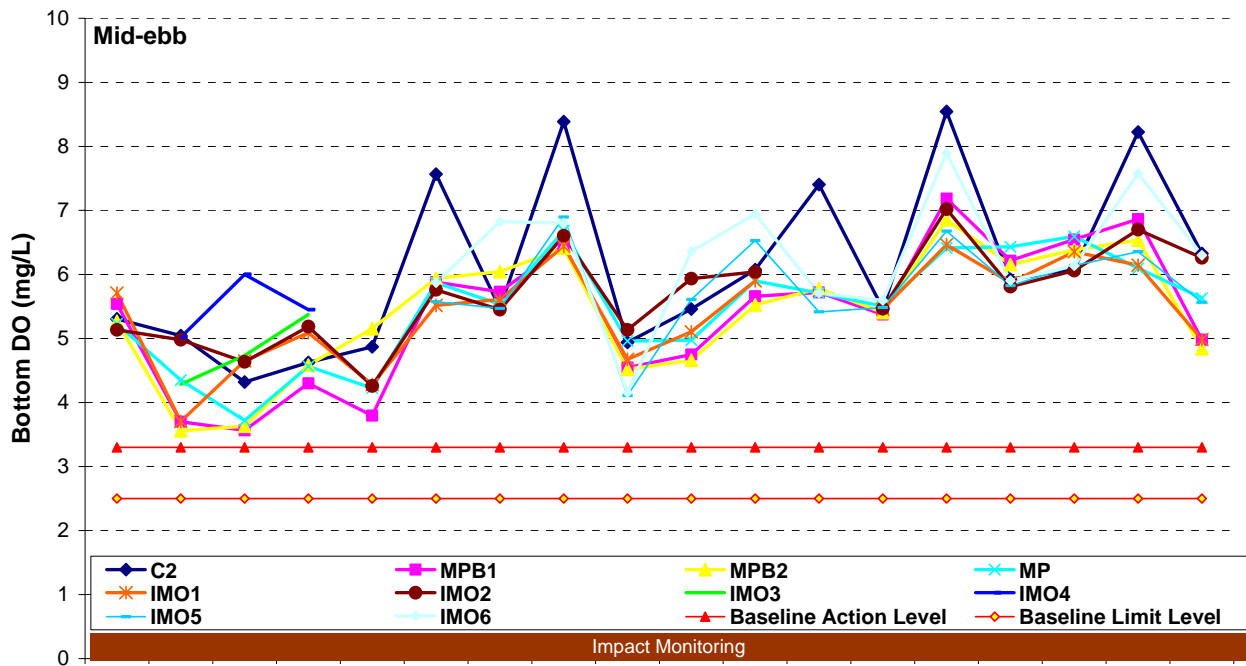


Figure G2 Dissolved oxygen concentration (bottom) (mg/L) of water samples at mid-ebb and mid-flood between 13 and 30 November 2009

Ref: 0018105_Annex G_water graphs.doc



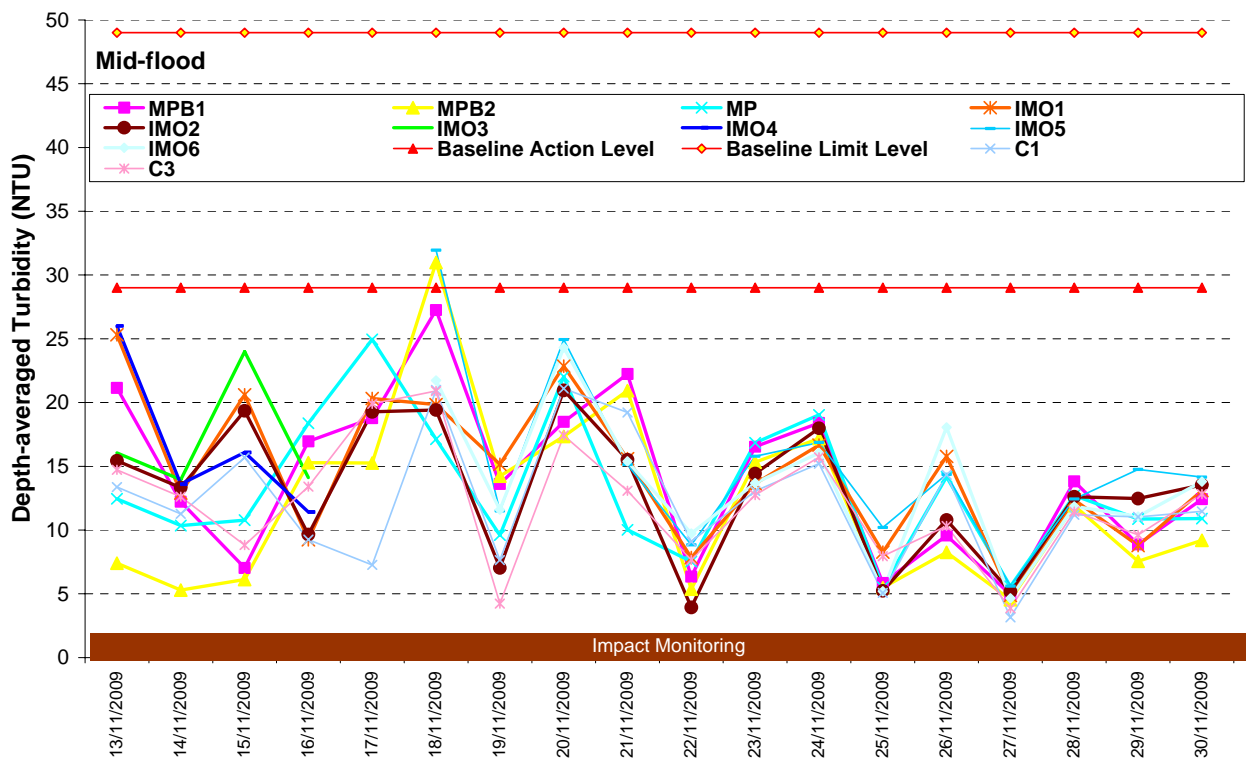
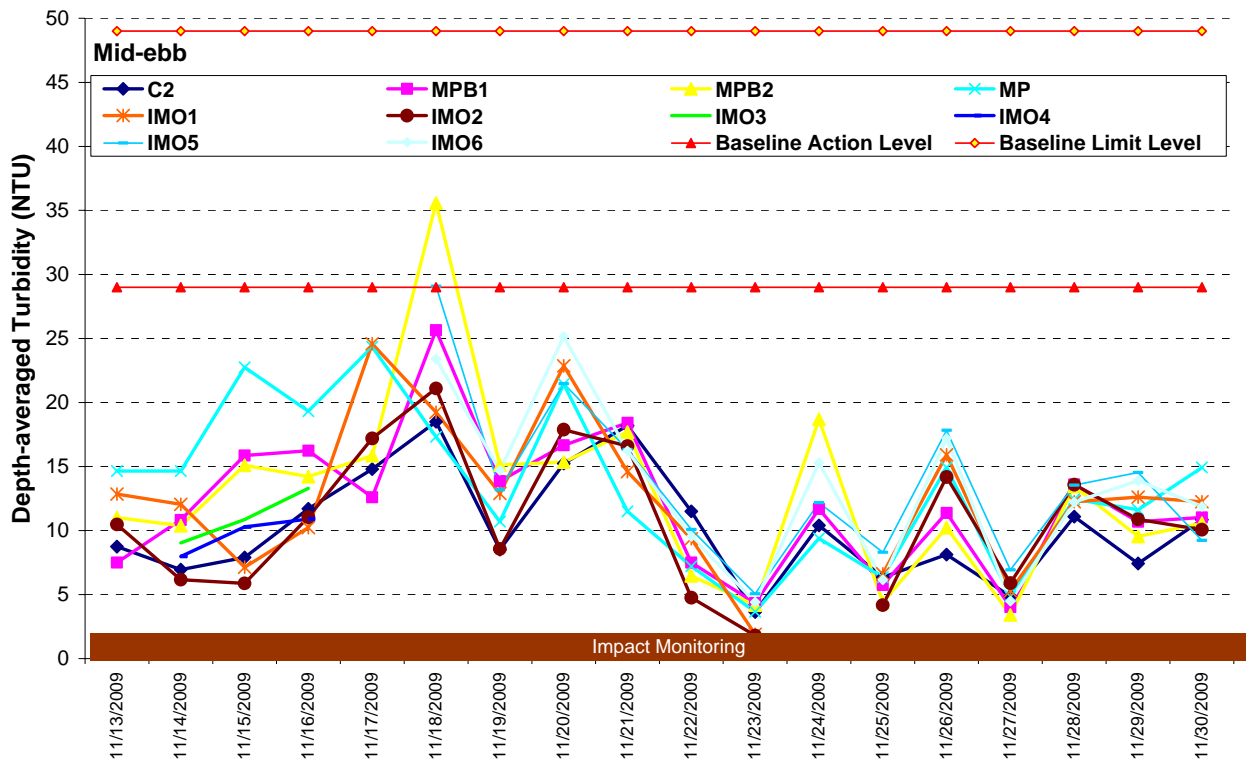


Figure G3 Depth-averaged turbidity (NTU) of water samples at mid-ebb and mid-flood between 13 and 30 November 2009

Ref: 0018105_Annex G_water graphs.doc



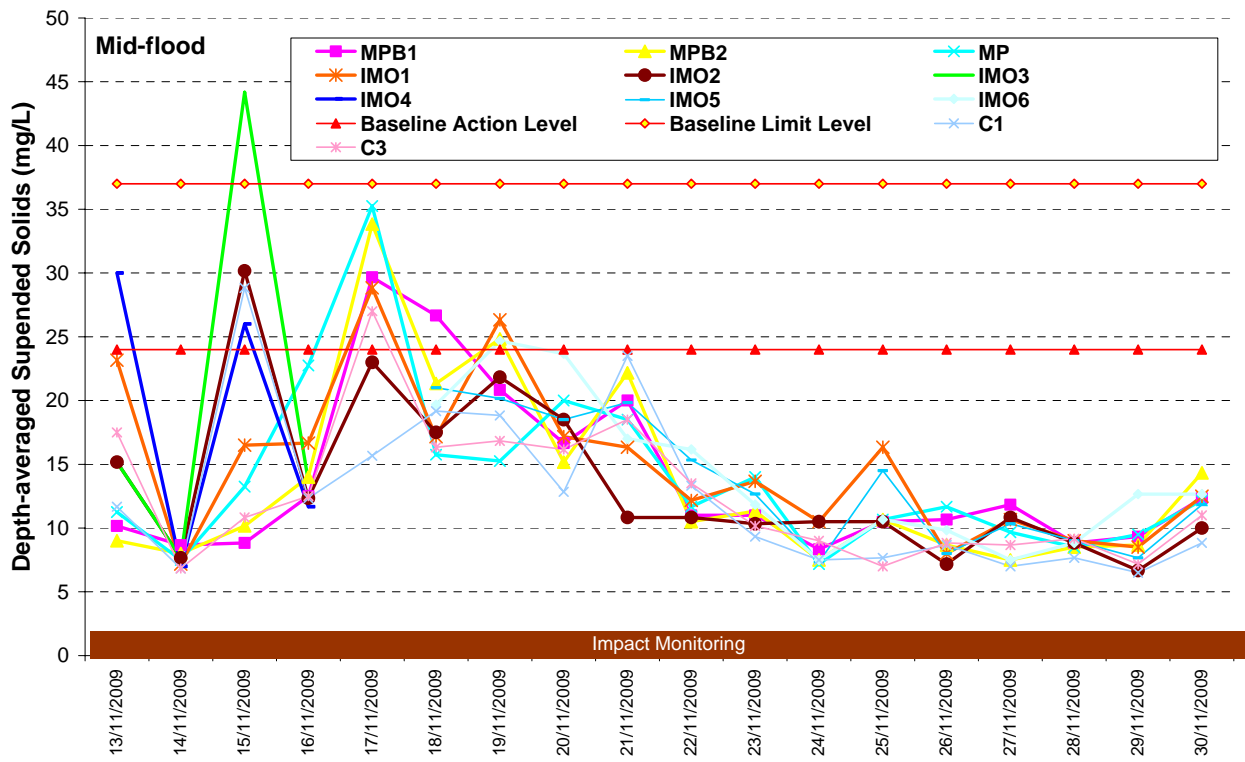
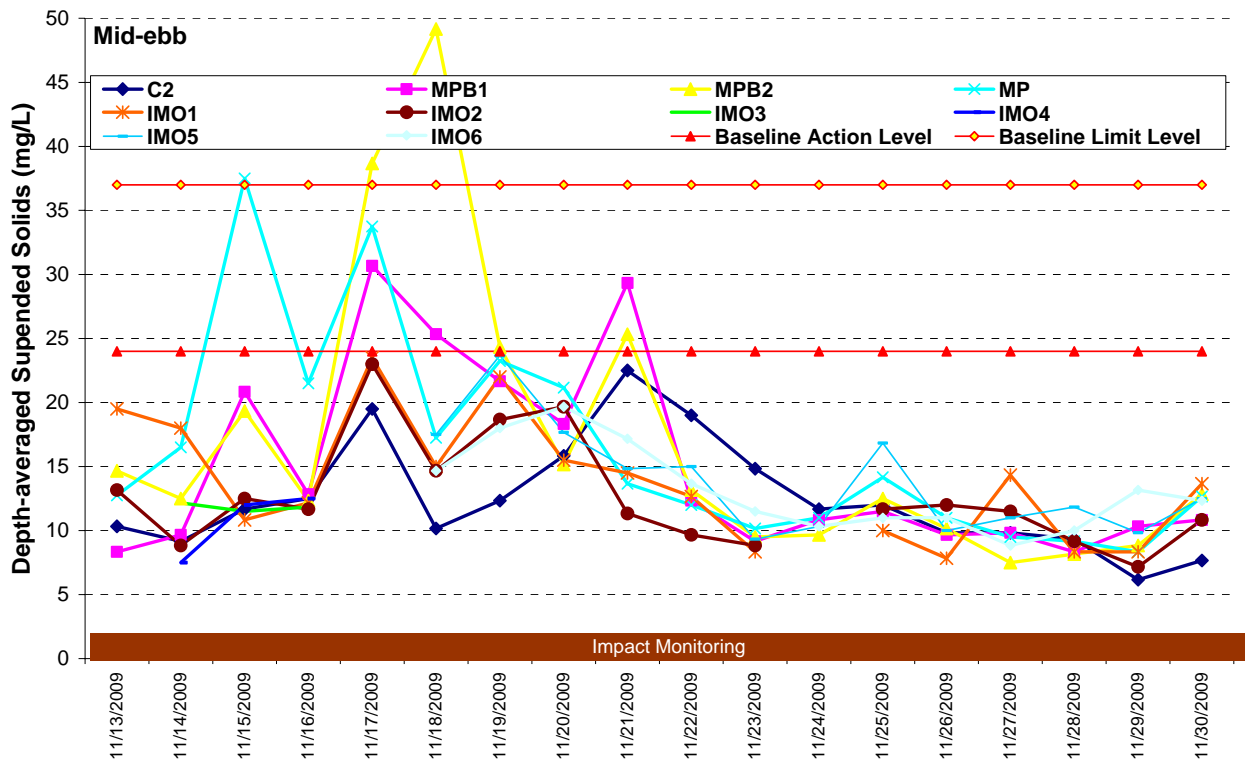


Figure G4 Depth-averaged suspended solids concentration (mg/L) of water samples at mid-ebb and mid-flood between 13 and 30 November 2009

Ref: 0018105_Annex G_water graphs.doc

